

ADOPT A MONUMENT AND DUNOLLIE PROJECT

KILBRIDE KIRKYARD SURVEY AND RECORDING

LERAGS, ARGYLL



*Kilbride Kirkyard-Viewing towards the North*

FINAL Report DRAFT

December 1st 2014

## LIST OF CONTENTS

Background.....	
Historical background.....	
The project.....	
Historic Graveyard Survey Summary.....	
Previous documents and recordings.....	
AaM Survey data 2013	
The Gravestones.....	
Gravestones/slabs of note.....	
The Graveyard.....	
Proposals for next steps.....	
Inferences and matters of further consideration arising from this survey...	
<b>Annexe I</b> Gravestone recording and condition report	
<b>Annexe II</b> Graveyard condition report (Separate file)	
<b>Annexe III</b> Lichens of the Kilbride graveyard-identification of selected species	
<b>Annexe IV</b> Transcript of Genealogical Society (Rosemary Mitchell 1972) recording of names on gravestones mainly prior to 1855	
<b>Annexe V</b> Gravestone Hi resolution photo archive (Separate file)	
<b>Annexe VI</b> TABLE of Comparisons of Recording of West Highland Monuments of Kilbride Kirkyard	
<b>Annexe VII</b> Index of family names with grave numbers at Kilbride	
Annexe VIII Table of Primary and Secondary names on gravestones ordered by Reference Number	
Bibliography.....	



## Introduction

Kilbride, comprising an ancient chapel site, church ruins, graveyard and burial ground of the MacDougalls, lying three miles south of Oban in Lerags Glen is set within a landscape of protecting hills with a stream, old track, a natural connecting route to the sea. The island of Kerrera is part of the parish.

Archaeology Scotland's Adopt a Monument scheme was approached by representatives of MacDougall of Dunollie Preservation Trust for volunteers interested in local history to undertake a graveyard survey and assess conservation needs.

A desk top survey and measured graveyard recording was undertaken by means of plane table and tape and offset. This report explains the full scope and vision of the project, an interim report having been published in Discovery & Excavation in 2013

## Background

Kilbride Kirkyard, Fig. 1 located at Lerags to the south of Oban, is the private burial site for the Clan MacDougall and was the historic public burial site for other families in the area.

The Kirkyard is recorded on Canmore as ID 22912, site number NM82NE36, NM 85694 25705. WOSAS Ref. 1102, HS Ref 3761 (SAM) HS Ref 11980 and 11981, listed in the Inventory of Argyll Vol II Lorn<sup>1</sup>. The kirk and burial ground were recorded on the OS 6" Argyllshire sheet, 2<sup>nd</sup> Edition (1900).

In 1925 under the Church of Scotland Property and Endowments Act (1925), Heritors of Kilmore and Kilbride (previously MacDougall of MacDougall, Campbell of Lochnell, the Marquis of Breadalbane and Campbell of Dunstaffnage) ceased to exist, and the responsibility for the burial ground was handed over to Kilmore and Kilbride Parish Council.

In 1929 the Local Government Scotland Act abolished Parish Councils and the responsibility was turned over to the County at District level who administered it until 1980<sup>2</sup>. At this time a fund was set up to look after the burial ground, possibly by local subscription.

The Kirkyard was privately purchased, and remains under private ownership

## Historical background

Kilbride church, standing to the north of Loch Feochan, was founded (and named) by or for one of the Celtic/ Irish missionaries of those times, St Bride/Bridgit, as indicated by the name Kil-bride; she died about 525 AD aged 74. It is thought that Kilbride has long been a site of worship. Local place names such as Beallach an t sleuch daidh (the pass or place of prostration) and Tobar an Easbuig (Bishop's well) support this, but no documentary evidence has been found before 1249 when Kilbride first appears in the records.

King Alexander II includes it in the Scottish King's consolidation document penned during his terminal illness at Kerrera. This granted under direction from the Pope a new Cathedral Church at the parish church of St Brigid in Lorn, (Kilbride) as the See of Argyll. Two papal letters, written to the

Bishops of Dunblane and Glasgow had requested the restoration of the bishopric of Argyll, the See on the island of Lismore having been vacant for seven years.

The transfer of the See of Argyll from St Moluag's on Lismore to Kilbride on the mainland appears to represent the political power struggles of the time between the powerful MacDougall Lords of Lorn who were semi-independent Norse vassals for their islands, and the Scottish monarch, King Alexander II who wished to gain control over the Hebrides whether by purchase or conquest, and the Church, represented by Bishop Clement of Dunblane.

Following Alexander II's death, his proposed endowment of a Cathedral church at Kilbride did not happen but in 1250 a new bishop of Argyll is based in Lismore.

By 1671, the 13<sup>th</sup> century church had become ruinous, and therefore, the people of the parish made a meeting house at the site of the church and in 1706 the present structure was erected, said to be beside the ancient church of Kilbride<sup>5</sup>. The remains of the existing building are believed to show construction phases ranging from the 13th to the 15th century<sup>1</sup>.

After the Reformation, in the early 17th century (1638) the Parish was united with Kilmore, but retained its own church; services were held in the churches in Kilmore and Kilbride on alternating Sundays. The Kilbride graveyard was enclosed shortly after 1794<sup>1</sup>, encompassing at its' north east end, the roofless ruins of the old Parish church (built in 1706), close to or adjacent to the site of the earlier church, dedicated to St Bridget.

Up until about 200 years ago the small population of fishermen in Oban walked to Kilmore or Kilbride on Sunday for church, but as the village of Oban grew in population the churches at Kilmore and Kilbride became very crowded and it was decided that a church be built in Oban to ease the pressure on these older churches. The public graveyard continued to be used into the early 20<sup>th</sup> century; however, the church fell into disuse and disrepair in the 19<sup>th</sup> century.

### **The Project:**

The MacDougall of Dunollie Preservation Trust (MDPT) was established in 1998 with goals to "undertake the preservation and care of artefacts archive and buildings relating to the Clan MacDougall at Oban.....". Applications for heritage fund support and Adopt a Monument support included elements to undertake a graveyard survey of the Kilbride kirkyard, create a genealogical resource and assess gravestone conservation priorities.

Key activities were nominated as a programme of gravestone and graveyard recording; the survey to include a condition survey so that a conservation plan could be drawn up for future conservation measures, train a group of local volunteers to undertake the recording, a programme of awareness raising to increase public knowledge of the graveyard and design and install an interpretation board.

Training in plane table surveying and graveyard recording was provided by Adopt a Monument/Archaeology Scotland to volunteers and administered through Dunollie Preservation Trust in May 2012 with a second training/refresher for new and existing team members in March 2013. The team of trained volunteers, under the auspices of, and with support from the Archaeology Scotland, 'Adopt-a Monument' Program and the MDPT have undertaken the survey of the historic public graveyard and gravestones of the Kilbride Kirkyard.

The Kirkyard at Kilbride is comprised of three areas, The MacDougall burial aisle, which lies 2 metres south of the church, a roofless, rectangular enclosure where traditionally, the chiefs of the Clan MacDougall were buried and includes the gravestone of John MacDougall, known as Iain Ciar. The MacDougalls of Dunollie and of Gallanach have been buried in this enclosure adjacent to the church from 1737 when John MacDougall was buried there, the current MacDougall chiefs burial enclosure and the historic public graveyard with evidence of use since medieval times, and the subject of this measured survey. It encompasses the ruins of the kirk.

Outcomes of this 'Adopt a Monument' survey and recording project will include interpretation, increased awareness and understanding of the Kilbride graveyard through archaeological investigation, inventory of the site, a genealogical resource, and conservation priority assessments for the graveyard and gravestones. A baseline audit, survey and conservation plan report/management plan will be prepared.

The team of volunteers have been undertaking the above survey and recording work, and since March 2013, have spent more than 210 hrs on site using plane table and alidade, and where necessary, tape/offset and more than 90 hrs desk top work and visits to appropriate and informative sites and archives researching, collating and recording details.

### **Historic Graveyard Survey Summary**

The graveyard has two levels, the western elevated section and the eastern lower level, containing the ruin of the kirk (Fig 2), and the McDougall burial aisles.



*Figure 2* Photograph of the ruins of the Kilbride Kirk taken from the western (upper) level of the public historic graveyard. The entrance to the historic MacDougall Chiefs burial aisle can be seen to the right of the kirk

Previous reports on this graveyard had either 1) documented the presence of the medieval West Highland Monuments in the *Inventory for Argyll, RCAHMS Vol II p142*, but without location, 2) for the more recently inscribed gravestones, but particularly pre 1855, the genealogical data had been recorded but not transcribed precisely<sup>10</sup> and no location information could be located.

In the current measured survey, we have recorded the condition, location and where possible inscriptions (within bounds of readability due to erosion/weathering and wear) of the gravestones and graveslabs in the public historic graveyard. This survey has therefore also recorded gravestones and graveslabs not noted in previous documents and proximity to or co-location with the unstable SSW side of the hill showing slippage of the graves, headstones and graveslabs. The steep and medium slopes on the west and north west margins of the graveyard, respectively, showed no

obvious signs of graves in danger on the grass covered surfaces; however no shallow probing was undertaken to explore this further.

The relative positions of the two hundred and three graveslabs have been plotted onto survey sheets of the graveyard, and photos of the survey sheets are included here as Figs. 3a, 3b and 3c

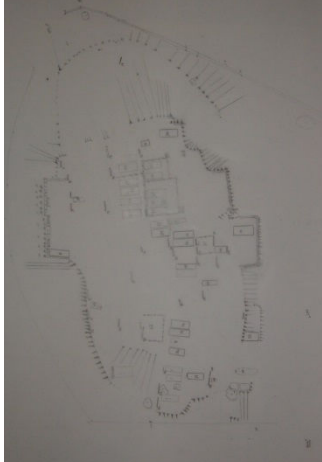


Figure 3a Photograph of permatrace measured survey sheet of the recording of gravestones in the upper (western) section of the graveyard. Plane table and alidade technique was used for position and measurement.

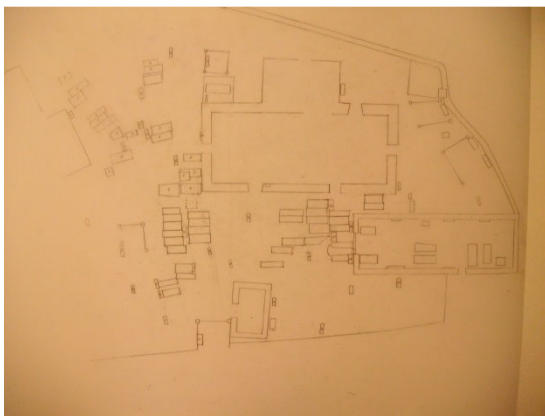


Figure 3b Photograph of the permatrace measured survey sheet of the recording of gravestones in the lower (eastern) section of the graveyard. Plane table and alidade method was used for position and measurement. Tape and offset method was used for gravestones in difficult restricted space positions.

Figure 3c (below) is a digital composite of the upper and lower graveyard section survey sheets stitched along the common border. The numbers in the gravestone rectangles correspond to the gravestone number in Annexe I, the Gravestone Condition Reports. Generally the large rectangles represent the recumbent graveslabs and the small rectangles represent the erect headstones; however, in some cases the recumbent slabs are fallen headstones.

Drawing convention symbols are included to indicate for example the significant slopes

on and around the site, railed enclosures - - -, and some major trees

Kilbride kirkyard and Kirk, Lerags  
Canmore NM82NE 36 85694 25705



A condition reporting sheet for each of the gravestones and graveslabs has been completed including a record of the inscriptions and any carvings and compiled into **Annexe I**. Photographic records of the gravestones have been compiled and archived as **Annexe V** (separate file) as high resolution digital files suitable for printing and further research, and lower resolution photo digital images are embedded in the attached Gravestones Condition Report, **Annexe I**, suitable for this report and web based publication.

A graveyard recording form has been completed and attached as **Annexe II**; with the summary included this comprises the Graveyard Condition Report.

A feature of most, if not all kirks, buildings and graveyards using stone in the West Highland and Islands, is the environment which encourages growth of fungi algae and moss, and therefore lichen. Kilbride kirkyard is no different with a significant range of spectacular lichen species growing on the stones. Consequently a superficial screening of the lichen present on the gravestones was undertaken, categorising them generally into leprose, crustose, foliose or fruticose, and where possible making non-destructive identifications of the families and species and recorded with each gravestone condition report (**Annexe I**). The summary of this lichen screening is attached as **Annexe III**, with a selection of identified species and close-up images of a limited selection of lichen from the Kilbride gravestones with some detail to aid identification.

From the Measured Survey Plan it is obvious from the spaces between visible graves in some areas of the graveyard, particularly in the Upper (W) end, that there are either further gravestones to be 'uncovered' and/or gravestones have been removed/relocated. They may possibly have been moved to the lower East section (reused), or removed from the site, see the section on 'Inferences And Further Investigation' for further discussion.

### Previous Documents and Recording

Searches for previous surveys and recordings have so far discovered one document which records the inscriptions noted in 1972 by Rosemary Mitchell, for the genealogical society, which focused on the genealogy particularly pre-1855. This is located at the Argyll and Bute historical archives in Lochgilphead. A transcription of this has been made, included as **Annexe IV**, and has been cross referenced to this survey, and where appropriate the individual transcription included in each of the gravestone condition reports identified by preceding the inscription with 'RM and the number in genealogical survey'. This can be particularly helpful as a way of determining the degradation rate of the gravestones between 1972 and 2013. However, it should be noted that this transcription for the genealogical society focused on making a record of the names, and not a faithful transcription of the inscriptions on the gravestones.

Of the several documents revealed in the MacDougall archives relating to Kilbride kirkyard to date, the only ones which assist with the measured survey are: 1) the hand-drawn plan figure 4a, which relates to burials in the historic MacDougall aisle, with no date on the plan, but recording the gravestones, location and the name of the burial,

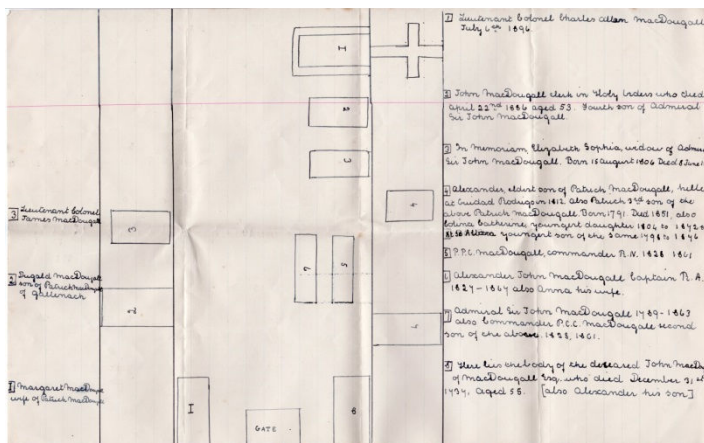


Figure 4a. Hand drawn plan from the MacDougall Archive of the Historic MacDougall Chiefs Burial Aisle. This includes the first Chiefs grave, Iain Ciar, 1737.

2) a plan for the construction of a MacDougall private burial precinct extension (Fig4b), but no record of the historic public burial area. There are further archives to be researched



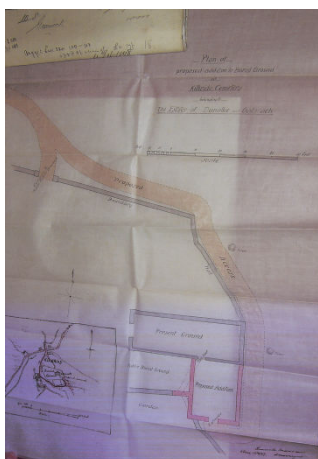
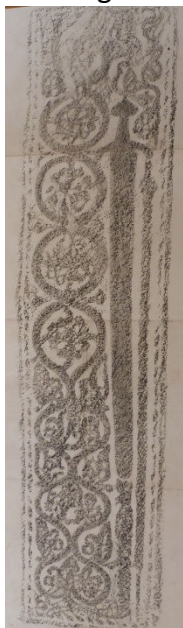


Figure 4b plan from the MacDougall Archive for the extension to the graveyard for a MacDougall Private Precinct. Other documents in the archive were Agreements concerning transfer of ownership to MacDougall from the adjacent landowner for the extension.

Archives at Inverary Castle hold rubbings made between 1896 and 1910<sup>9</sup> for Lord Archibald Campbell by Mr. Jack, of the Lerags Cross and the Western Highand Medieval Grave Slab Carvings. Volunteers travelled to Inverary to view and photograph several of these rubbings for comparison with grave slabs located by this survey. For comparison a rubbing with a contemporary photo is shown in Figure 5.

Rubbing-Inverary



Slate #299



Figure 5. The photograph of the rubbing made by Mr Jack in 1908, #x9 in the archive index, is shown at the far left for comparison with the photograph of the graveslab, #299, taken as part of this survey at Kilbride.

For further comparison , the description recorded in RCAHMS: Inventory of Argyll, RCAHMS Vol II p.142 #9 states: "Tapered slab with bevelled edges... double plant scroll to the left and sword to the right"

The two index volumes to the rubbings were also located at the RCAHMS archives, Edinburgh, as part of Steer and Dixon uncatalogued notes. Notably there is a probable error in the archived rubbings description held at Inverary Castle in assigning a particular rubbing x1 to be a cross of Corrylorne, rather than a graveslab. This will be discussed later.

The Inventory of Argyll Vol II<sup>1</sup> contains descriptions of 19 medieval grave slabs at Kilbride, but no location details within the graveyard. Following a visit from Susan Buckham to Kilbride and meeting

with the 'Team', a visit to RCAHMS archives, Edinburgh was arranged to access the notebooks and other materials of Steer and Dixon who conducted the fieldwork for the Inventory of Argyll vol II and their uncatalogued/uncollated entries relating to Kilbride Ecclesiastical Monuments, searching for notes on descriptions and some location information for the Kilbride West Highland Grave Slabs <sup>6</sup>. This allowed us to compare the graveslabs visible/found now and at the time of their survey, and rate of degradation (if any), see Table, **Annexe VI** and Figure 5.

### **AaM Survey Data 2013**

#### **The Gravestones**

The majority of the upright headstones and laying, dated gravestones/grave-slabs surveyed with inscriptions and recorded for this project relate to a period between 1693 and 1910.

The gravestones are generally comprised of granite, sandstone, slate less commonly, schist with a significant proportion of these showing wear, with loss of inscriptions, breakdown of surface, and in some cases significant cracking.

Several of the gravestones and laying slabs in the upper level are at the edge of or on steep slopes in the graveyard, and remedial action will need to be taken to prevent them from slipping or toppling down the slopes. Previously three gravestones have had support-work added to prevent them from falling, for example Figure 6.



Figure 6, two of the grave headstones, #6 and 7, showing support work to prevent them from toppling down the slope at the west end of the upper level of the graveyard. This type of support is only possible due to the wall behind/below the headstones.

The gravestones in danger due to physical location (including trampling even when covered in grass for example #73, Figure 7) as well as environmental (weather, root and plant growth damage) are noted in the gravestone condition report section.

The West Highland Medieval Ornamented graveslabs are made of sandstone, slate and less commonly, schist and probably date to the 14<sup>th</sup> to 16<sup>th</sup> century, below we show examples of two styles of carving found in the Kilbride kirkyard based on the Steer and Bannerman classification of:

## Loch Awe (Fig7)



Figure 7, graveslab #73 Probably Loch Awe Class II, sword central slate slab, sword with cantered quillions/reverse guard flanked on either side by rough vines, 2 opposed cats at top, heads eroded, 14<sup>th</sup>-15<sup>th</sup> century . The slate relief carving is fragile, and being covered with grass and therefore not noticeable, visitors use this as a walking route.

## 2) Iona (Figure 8)



Figure 8, examples of two Iona style carvings, showing typical features of the Iona carvers including more delicate carving than Loch Awe; Far left, #83 Upper (W) level, Iona Class II single scroll forming circles ctg. Leaf sprays in centre narrow panel, circular volutes filled with clusters trefoils

Centre, #299 from the lower (E) level, probably Iona type II sword, Slate slab, nail head moulding. Staff with round pommel and button on right. Same length as sword blade . Plant scroll to left.

Several of the medieval slate laying graveslabs are thought to have been made from slate sourced from local quarries at Easdale and Ballachulish. These slates contain pyrite deposits and consequently show degradation (rusting) to varying degrees, for example #73, Figure 7, and noted in the Gravestone Reports, **Annexe I** .

### Notes on carvers style-identification

*Caldwell et. al. recently proposed an alternative view to that of Steer and Bannerman for the strategy for classifying the styles of carving based on proximity to local stone and carvers; however, for consistency, Steer and Bannerman's classification will continue to be applied "Late Medieval Sculpture in the West Highlands" <sup>2</sup> in this report as the main reference to differentiate between the various Schools of Carving, and identify the source of carvers for the medieval grave slabs, predominantly using their simple descriptors, differentiators, and commentary*

*Of the competing schools of carving operating in the region in the 14<sup>th</sup>-16<sup>th</sup> century; the **Loch Awe School** is of particular interest locally, derived in the 14th century from the Knights Templar, who entered through Kilmartin and brought with*



them their highly skilled tradition of intricate stone carving and operated in the Dalmally area carving out of granite schist with sophisticated knot-work patterns that had not been seen here before<sup>2</sup>. Although based in Dalmally, they travelled to various locations to undertake the carving with whatever stone was available; unlike other schools of carving, for example Iona. This later **Iona School** is also represented at Kilbride, but so far appears only to be represented by monuments carved in slate. Towards the end of this period the use of the various schools of carving decreased with a reduction of the carving on Iona and distribution of the carved slabs to order, to a system whereby independent carvers became more frequently used, possibly travelling to local sites, thus making identification of the source of carving more difficult.

Briefly, the main differentiators for the local schools of carving. **Oronsay carvers**: most bear claymore or black letter, no dog tooth ornament, several graveslabs made on Oronsay resemble Iona Class VII slabs displaying pairs of small figures for example father and son clad in armour of different periods with holly leaf scroll casket with small bird and small bird on casket. **Loch Sween carvers**: fantastic creatures half human half animal-not found in other schools. **Loch Awe carvers**; clumsy with asymmetrical interlace, Saddell work has distinctive huntsmen. **Kintyre carvers**, distinctive sword, which is the dominant motif, usually to left or right of main axis and is single handed with lobated pommel, slightly inclined quillons, and usually shown in a scabbard. There are flanking strips of plantwork, scroll with stems linked at the top to the legs or the tails of nondescript quadruped. Most popular is repeated clusters of small tri-foliated leaves, galleys with furled sail, shears, comb and casket but human figures are rarely represented. Kintyre 'ornament is blocked out, devoid of lightly etched surface decoration and does not use the foliated cross. Iona carvers; interlocking rings, considered superior to Kintyre, which includes foliated cross, lightly etched surface decoration. However, it is recognised that Caldwell et al propose that the location, source and nature of the stone chosen for the slabs, and therefore the skill of the carvers local to the churchyard has more of an effect on the style of the carving than any particular perceived school of carving.

One particular slab #76 Figure 9 of different composition to the others, was found in the upper (western) section. This laying stone, possibly being used as a grave-slab, with rune-like markings, it has also been suggested from the shape of the foot that it may be medieval; however, it continues to be investigated as the result of further markings being just seen on an adjacent surface to the exposed surface.



Figure 9, A sandstone slab #76, in an orientation aligned with other graveslabs in a row in the upper part of the graveyard. Inspection of the top surface shows crude rune-like markings, see photo far left, and parts of apparent markings on the perpendicular surface, see below.



#### Gravestones/slabs of note at Kilbride:

The survey identified the locations of nine medieval West Highland Monuments, of which two are in excellent condition; these are Loch Awe style carving on sandstone (#65 & # 67 in **Annexe I**) and

shown in Figure 10 below. A third noted to be the best example of a medieval West Highland carved gravestone by Steer and Dixon in their survey, is not evident in the graveyard, and is reputed to have been removed, as a consequence of a Glasgow University field trip, to the National Museum collection in about 1974. However, no record or evidence of any publications or research based on this and one other from Kilbride has been uncovered yet.



Figure 10, shows sections of two medieval carved graveslabs laying in a railed enclosure in the upper (western) section of the graveyard. The photo of the slab on the right #65 shows a female figure with mirror, sun within oval and a central section containing an angel with trumpet connecting to circle in bottom panel; the image on the left #67 shows immortality symbol at top right, to viewers left is knotwork in 3 circles down one side with possible armorial and banner in centre.



The survey identified further carvings on slate, one Iona style carving (#45 in **Annexe I**) Figure 5, and one Loch Awe style carving #299, Figure 4. The Iona style carvings at Kilbride are predominately carvings into the slate, rather than the Iona relief carvings seen at Kilmartin and Iona and Loch Awe at Kilbride.

A sand coloured sandstone slab, (#76 in **Annexe I**) with irregular surface contours and markings on the exposed upper surface (Fig 9) was discovered laying in the upper (western) part of the graveyard during the survey. The markings on the visible exposed upper surface were compared to known runes and referred to experts in the field. On further examination of the slab, markings were found on an adjacent side to the exposed markings when the edge was examined in further detail from the top; however, the extent of these markings needs to be determined and this may only be achieved by excavating down this side, or by raising the stone. Whatever the origin of the slab and markings, the location in the upper part of the graveyard with other laying slabs, with some of the 14<sup>th</sup>-15<sup>th</sup> century West Highland Grave Monuments (Loch Awe and Iona styled carving) and an orientation aligned with the other slabs, indicate that this latest use was probably as a grave slab. It has been proposed that from the shape of the foot of the stone, indicates 14<sup>th</sup>-15<sup>th</sup> century;; however, in that case the expectation would have been that the inscription/markings would be in Latin.

Other possibilities are that the markings could be plough marks, which seems unlikely given the places of the marks on the stone, or that they are made by drill bits in quarrying, but again the position and distribution of the marks make this unlikely. Comparing the markings on the Kilbride stone to stones with runic inscriptions, show some similarities to those found on the Isle of Man as reviewed by Page<sup>11</sup>, for example Gautr's Cross at Kirk Michael. Similarity is also seen with the inscription on the back of the Kilbar Cross on Barra. The Inscription/markings on the Kilbride stone are large and crude, and a search for further equivalent markings would aid with identification. This stone has not been documented previously by others who have reported on the graveyard (*Inventory for Argyll, RCAHMS Vol II p142*, and Steer and Dixon notes), but this may be due to its

slightly sunken position in relation to the surrounding features (grave slabs). As there are few examples of Ogham Stones in Scotland, this should be examined in more detail to confirm the cause of the markings.

A laying graveslab #29 in Annexe I, (Fig 11 below), was identified in the upper western end of the graveyard, dated 1629, but commemorating Alexander of Corrilorne in 1623. This was located close to where the pieces of the Lerags Cross were found.



Figure 11, Memorial slab to Alexander of Corrilorne, as originally photographed in 2013, far left, and after preparation for photography in 2014?, showing much better detail. Blank top panel, surrounded by a floriated design. On the right, a female figure, on the left a kilted warrior, spear in right hand, left hand on sword. At the bottom of the panel are the remains of a galley, the hull is just discernible.

This slab had previously been documented in 1908 as the top stone of the “Cross of Corrilorne” by The Duke of Argyll and Mr Jack as the stone rubbing stored in the archives at Inverary Castle; however, this may have been confused with the Campbell of Lerags Cross. The stone was noted as not found by Steer and Dixon in their survey of 1963 (Steer and Dixon notes RCAHMS archive, Edinburgh). The shaft proposed in the Inverary archive, was not found in this survey, and was possibly the shaft of the Lerags Cross.

An isolated stone with a carving of Clasped hands (Fig12) apparently carved in limestone, was found close to kirk ruins, and possibly dates from the earlier 13<sup>th</sup> century kirk.



Figure 12 Clasped hands carved stone.

So far only one gravestone with a Gaelic inscription has been found (Figure 13)





Figure 13 Graveslab with Gaelic inscription located in the upper west end of the graveyard. The upper inscription is in Gaelic,. For more detail, see entry #57 in **Annexe I**

Medieval Western Highland graveslabs identified in this survey have been listed In Table II (**Annexe VI**) along with previously published or identified graveslabs recorded at Kilbride. From this it is obvious that there are several graveslabs which have been identified before, but not seen here either due to 1) being covered by grass etc. a possibility as there are several areas in which no slabs are obvious, but could be under thick layers of grass and soil or 2) have been removed to other locations as reported anecdotally.

### **The Graveyard**

The graveyard is enclosed in a rubble stone wall, originally round or oval elongated in the east-west direction, with some straightening of the sides, see Figure 3c for the shape. The wall has an entrance centrally in the north wall. The wall is generally intact with one break in the wall at the north west corner and some slippage/tumbling of stone to form a partial gap on the south central wall. The stones of the pillars holding the gate at the north entrance to the graveyard have suffered significant weather damage cracking and mortar loss. The front section eastern pillar has collapsed and the stones of the western pillar are starting to show the same damage. Emergency remedial work for safety has been undertaken, however this needs stonemasons skills to rebuild the pillars.

The wall encompasses the historic public graveyard, the historic MacDougal burial aisle, the current MacDougall family burial aisle and the remains of the kirk. Our permission was to survey the historic public graveyard only, and any references to the MacDougall Burial Aisle or the current family burial aisles, are there because they impinge on the historic public graveyard.

The graveyard comprises four functional areas, 1) The MacDougall burial aisle, which lies 2 metres south of the church (Figure 14), is a roofless, rectangular enclosure entered through an arch, where traditionally, the chiefs of the Clan MacDougall were buried 2) the current MacDougall chiefs' burial aisle



Figure 14 showing the entrance to the MacDougall historic burial aisle to the right of the church ruins.

3) the lower part of the historic public graveyard with the ruins of the kirk built in 1706 on the site of previous religious buildings (since before 13<sup>th</sup> century) and 4) ) the upper (western) part of the historic public graveyard with monuments which indicate use since medieval times. The statistical account of 1791 stated that the 'kirk at Kilbride did not have a church-yard' but it was proposed to have one soon. The churchyard at Kilbride was said to have been enclosed by the current wall in 1794. At the western end of the upper western section there is a steep slope down with several headstones close to the edge, two of which have had some remedial support added. At the SW and particularly SW edges of the graveyard, there is an eroding slope down, several grave slabs slipping with this slope; however, some have already fallen. A graveyard report is amended here as **Annexe II**.

Although this survey did not include a survey of the kirk, it is relevant to note here that the remains of the kirk are, in some places such as the western doorway (Figure 15), southern window arches, (Figure 16) and particularly the session house unstable or in a state of possible collapse and needs assessment and remedial conservation work to make these areas of the kirk and the adjacent kirkyard areas safe from falling debris



Figure 15 far left, door at west end of church

Figure 16 windows south side of church

The internal wall of the session has been breached by a sycamore tree which is both supporting and breaking the session house wall (Figure 17), a ruling needs to be made as to how to deal with this, as the doing nothing option is neither safe nor sensible in the context of this iconic location and history.



Figure 17, Showing again that Sycamore and stone don't mix. The remains of the session house south wall/north wall of the church ruins.

#### **Proposals for next steps;**

- 1) Implement advice and recommendations from graveyard/gravestone expert
- 2) For the historic public section of the graveyard specific needs include:
  - a) There are several significant carved medieval grave slabs that need to be protected from weathering and wear.
  - b) Several gravestones are on or close to unstable slopes, therefore the slope needs to be stabilised, or the graves moved. Some graveslabs are leaning at significant angles
  - c) The polished/marble gravestones particularly and some sandstone have eroded surfaces and inscriptions are being lost.
  - d) The remaining walls of the kirk need to be stabilised especially around doorways and windows, with general repairs to loose stonework.

#### 3) Conservation management plan

The key stakeholders in the graveyard and its contents are 1) obviously the landowner(s), and heritors and the MacDougall family for their respective parts of the graveyard, 2) the families and descendents of those buried in the graveyard for the information/histories contained in the graveyard, and presumably 3) Historic Scotland for the information contained within the graveyard on behalf of the families and descendents as well as their responsibility for maintaining "historic Scotland." Infrastructure.

These key stakeholders (or their proxies) should preferably be involved in the preparation and implementation of the management plan. Furthermore there should be advice from experts on

- i) Damage minimisation
- ii) Conservation strategies
- iii) identification/interpretation

#### 4) Decision on extent of further searching for previously noted gravestones/graveslabs

Should the decision be made to attempt to locate the remaining grass/moss covered grave slabs, then work within the guidelines provided by CSA will need to be undertaken, obtain appropriate permissions, including those for de-turfing, undertake work in a manner which recognises and respects the sensitivities of interested parties, including descendants, landowners, local authorities,

and expertise of archaeologists and conservation officers., according to the document : . *Working in a Scheduled or Listed Graveyard or Burial Ground*, , (2003) Graveyard and Gravestones Electronic Leaflet 1, Historic Scotland (Edinburgh)

5) Work with landowner on removing risk from liability issues with public access to kirkyard

6) Source funding to implement conservation management plan.

#### **Matters for further consideration arising from this survey.**

In The Statistical Account of 1791<sup>4</sup> it was noted that the Kilbride kirk had no associated kirkyard, therefore should it be assumed that the burial site at that time was located on the upper part of the current churchyard. If this were to be true, then an explanation of the West Highland grave slabs dating back to the 14-16<sup>th</sup> century close to the kirk ruins in the lower part of the graveyard needs to be explained. At this location, these graveslabs have been so worn that the carving and relief is all but worn away, compared to those found in the upper part of the current churchyard. It could be suggested that after the construction of the MacDougall burial aisle and from the interment of Iain Cair in 1737, and in subsequent years that access to this area would have been across a wet and muddy 'field', and the pragmatic solution would have been to bring old graveslabs from the upper part of the kirkyard to provide a less muddy access from the kirk or the entrance to the kirkyard. By looking at the location of these graveslabs we can determine if this may have been done; however, the dates of this would be difficult to determine.

There was anecdotal information that In the mid 1970s four grave slabs were relocated; two to Lerags House and two carved slabs with carvings which were considered superior to the rest and moved to the National Museum (anecdotal & personal communication). The decision will need to be made as to whether these can be found a relocated to their original sites. One of those putatively moved by National Museum can be identified from the notes of Steer and Dixon and subsequent personal communication.



Figures 18a and b

#### **The Project and Survey Team**

##### **MDPT staff members:**

Tara Coia  
Aonghas Murray  
Catherine Gillies

##### **Volunteers**

Alison Blackwood  
Bob Irving  
Faith Irving  
Colin Langford  
Neill Malcolm  
Margaret Malcolm  
Kath Small  
Zalina

**The owners of the surveyed graveyard,**

Myra and Liam Griffin who provided access, support, care and maintenance.

**Bibliography**

1. Inventory of Argyll, RCAHMS Vol II #253. p.140 et.seq., Old Parish Church Kilbride and p142 Funery Monuments Medieval June 1971. *Detailed description of the Lerags cross and inscription, and describes the carved grave slabs in the Kilbride kirkyard..*
2. Steer K. & Bannerman (1977) Late Medieval Monumental Sculpture in the West Highlands. *Describes the Various Medieval Schools of Carving, and comments on a limited number of carved grave slabs at Kilbride Kirkyard.*
3. Dugald N Campbell, minister, The United Parish of Kilmore and Kilbride, Statistical Account (1843)
4. Rev Patrick MacDonald, Minister, Vol Number VIII, United Parishes of Kilmore and Kilbride, (1744). Statistical Account of 1791-1799.
5. Archaeological Light on the Early Christianising of Scotland (1933) G.A.Frank Knight, vol 1., 243.
6. RCAHMS archives Box Unit 14888 Main Store 10/3/59 Blue Notebooks 12, 61-62, 101-1-2, 116-117. 13, 85-92; Red Books 3, 74-76 and 147-149
7. RCAHMS archives Box Unit 14888 Main Store 10/3/59, Blue Notebook 12, 100-102, 116-117
8. RCAHMS archives Box Unit 14888 Main Store 10/3/59 Blue Notebook 12, p62
9. RCAHMS archives Box Unit 14888 Main Store 10/3/59, Duke of Argyll's Catalogue of Rubbings IX (I) Kilbride No. 1 ; X (J) No.2
10. Rosemary Mitchell, for the Genealogical Society (1972), Argyll and Bute Archives Lochgilphead ,MIS 24-29, Kilmore and Kilbride Old Parish Churchyard Nr Oban
11. Page, R.I. (1995) In 'Runes and Runic Inscriptions', Boydell Press pp208-244

**Additional Sources**

Skene, William Forbes (1887) Celtic Scotland: A History of Ancient Alban, Church and Culture, chap 9 Old Celtic Church in Scotland,

Duncan, A. and Brown, A. (1957) *Argyll and the Isles in the Earlier Middle Ages* in **Proc Soc Antiq Scot.** vol xc p192-220, Edinburgh, National Museum of Antiquities of Scotland.

---



### **Annexe I Gravestone Register and Condition Report**

---

This is a report on the individual gravestones, providing type, composition, location, condition, and lichen growth and most importantly any structural damage or potential location damage; although this is dealt with in the Graveyard Condition Report.. Also reference to the genealogical survey by the Genealogical society is made and notes by Rosemary Mitchell in 1972 for this survey referenced as RM numbers in the remarks box where possible. The lichen types or species survey is an overview, with species identification on specific stones only noted when possible with observation only.



## Upper Churchyard:

### Condition report

#1

Orientation/Class	Material	Size	Shape	Local environment
Headstone upright	Granite	120x78x18 cm	Triangle top with additional blocks on top	On stone plinth in stone surround. Grass to base of slab, steep slope down 3m at rear.
Facing East				Photo ID IMPG3454
Engraving  Sculpture?	Trefoil in top triangle shape			
Damage	Deterioration-flaking top one sixth, cracking across centre of main stone		Lichen: Large white crustose colonies and white foliose colonies covering the top, edges and 30% of edges of eastern face.	
Remarks				

### Inscription/engraving:

IN MEMORY OF  
JOHN Mc CULLOCH LATE OF HM CUSTOMS LONDON  
DIED AT OBAN 7<sup>TH</sup> MARCH 1874  
AGED 59 YEARS  
AND OF HIS SISTER  
MARY LAMONT  
DIED AT TOBERMORY 1<sup>ST</sup> AUGUST 1874  
AGED 54 YEARS

## Condition report

#1



#2

Condition report

Orientation	Material	Size	Shape	Local environment
Standing headstone	Grey Granite	120x75x16 cm	Pointed curved top , stands on the top of 2 other semi-rectangular granite stones	In low stone enclosure grass to base and daffodils
Facing East				Photo ID 3455
Engraving?	Worn and difficult to see, engraved décor on pointed curved top, top and bottom of pillars both sides of the main stone. Engraved rectangular frame on the bottom stone, flowers around the base			
Damage	Granular Erosion, top stone surface deterioration-surface loss. Shallow inscription wearing away, mainly unreadable now			<b>Lichen:</b> White crustose and foliose lichen on plinth stones
Remarks	RM54a Our father Allan McCulloch died at Oban 1/4/1904 aged 76 years and our mother Elisabeth McCallum died at Oban 23/2/1886 aged 57 years. Our brothers Donald and John died at Easdale interred at Kilbrandon and sister Jessie died Oban 24/3/1880 aged 13 years.			

Inscription/engraving:

IN  
LOVING  
REMEMBRANCE  
OF  
OUR FATHER  
ALLAN MCCULLOCH  
DIED

AT OBAN

?????? 1904 AGED 76 YEARS

??????????????

???????????? MCCALLUM

????????????????????

AGED 57 YEARS

AND ??????????

????????? JOHN

??????????????

??? ARE IN ??????????????????

??????????????????

????????????????????? ???[1882?]

??????????????

#2





#3

Condition report

Orientation	Material	Size	Shape	Local environment
Standing headstone	Grey/pink granite	168x66x16 cm	Triangle on top	Grass and daffodils to base
Facing East				Photo ID IMGP 3456
Engraving?	In triangle Mason's mark with a G: 1871 in the centre			
Damage			Lichen: Grey and white crustose and foliose colonies on East face <10%	
Remarks	RM 52; 1871. By Archibald McIntyre, mason, Oban – his brethren Neil McIntyre, died March 1847 age 5 years. Dugald died October 1853 aged 15 years. Donald died October 1856 aged 19 years. Hugh died 20/6/188? Aged 76 years. Barbara Livingston wife of Hugh died 16/11/1892 aged 81 years. John 16/12/1913 aged 65 years. Pte Hugh McIntyre 48 <sup>th</sup> Highlanders of Canada killed at St Julian 22/4/1915 aged 31 years. Elizabeth Stewart, wife of John McIntyre died 7/8/1932 aged 76 years			

Inscription/engraving:

ERECTED BY ARCHIBALD MCINTYRE

MASON. OBAN

IN MEMORY OF HIS BRETHREN

NEIL MCINTYRE

WHO DIED MARCH 1847

AGED 5 YEARS

DUGALD DIED OCTOBER 1853



AGED 15 YEARS

DONALD DIED OCTOBER 1856

AGED 19 YEARS

HUGH MCINTYRE

DIED JUNE 20<sup>TH</sup> 1885

AGED 76 YEARS

BARBARA LIVINGSTONE WIFE

OF HUGH MCINTYRE DIED

16<sup>TH</sup> NOVEMBER 1892 AGED 81 YEARS

JOHN MCINTYRE DIED 16<sup>TH</sup> DECEMBER 1913

AGED 65 YEARS

Pte HUGH MCINTYRE 48<sup>th</sup> HIGHLANDERS OF CANADA

KILLED AT ST JULIAN 22<sup>ND</sup> APRIL 1915

AGED 31 YEARS

ELIZABETH STEWART

WIFE OF JOHN MCINTYRE

DIED 7<sup>TH</sup> AUGUST 1932 AGED 76 YEARS



#4

#### Condition report

Orientation	Material	Size	Shape	Local environment
Standing headstone	Grey granite	86x61 cm	Wavy-winged top shape	Low stone enclosure to back and sides grass to base
Facing East				Photo ID IMGP 13457
Engraving?				
Damage			White leprose and crustose lichen colonies on top and side edges to 30%, and some foliose	
Remarks	Difficult to read inscription,  RM53; By Alexander Livingston, his mother Mary MacDougall died November 182(2 or 3)			

--	--

Inscription/engraving:

ALEXANDER LIVINGSTONE

MARY MCDOUGALL

19\_\_

#4



#5

Condition report

Orientation	Material	Size	Shape	Local environment
Standing headstone	Granite/Schist	190x67x17cm	Triangle top upper part with 2 rectangular plinth stones,	grass to base of slab at front, low stone wall behind and steep slope down

<b>Facing</b> East				Photo ID 3458
<b>Engraving?</b>	On the middle plinth stone: "until the day break."			
<b>Damage</b>	Black lettering relief inscription, black mainly worn away and difficult to read			
<b>Remarks</b>				

Inscription/engraving:

IN LOVING MEMORY OF  
 PETER MACCULLOCH  
 WHO DIED 15<sup>TH</sup> APRIL 1868 AGED 77 YEARS  
 HIS WIFE JANE BUCHAN  
 WHO DIED 18<sup>TH</sup> APRIL 1866 AGED 73 YEARS  
 CHARLES MACCULLOCH  
 BORN 6<sup>TH</sup> SEPTEMBER 1814, DIED 12<sup>TH</sup> NOV 1886  
 HIS WIFE SARAH PATERSON,  
 BORN 2<sup>ND</sup> JAN 1822, DIED 8<sup>TH</sup> OCT 1904  
 THEIR CHILDREN  
 MARY,  
 BORN 29<sup>TH</sup> APR 1846, DIED 29<sup>TH</sup> APR 18??  
 DUNCAN MAROUIIS,  
 BORN 20<sup>TH</sup> JAN 1851, DIED 20<sup>TH</sup> FEB 18??  
 JAMES MAROUIIS,  
 BORN 18<sup>TH</sup> JAN 1857, DIED 27<sup>TH</sup> MARCH 1864  
 CATHERINE SCLANDERS,  
 BORN 15<sup>TH</sup> JUNE 1861, DIED 6<sup>TH</sup> OCT 1885

MYMA ISABELLA,

BORN 3<sup>RD</sup> DEC 1863, DIED 8<sup>TH</sup> APRIL 18??

On Plinth: UNTIL THE DAY BREAK



#5

#6

Condition report

<b>Orientation</b>	<b>Material</b>	<b>Size</b>	<b>Shape</b>	<b>Local environment</b> , grass to base of slab
Standing headstone	Pink limestone	170x55x13 cm	Curved top with shoulder and simple border rectangular plinth stone	
<b>Facing</b> East				Photo ID 3459
<b>Engraving?</b>	7 blade leaf and side scrolls in curved top			
<b>Damage</b>			<b>Lichen:</b> Some crustose and white foliose (mainly on curved top edge).	
<b>Remarks</b>	Large 3cm rust spot in main stone smaller rust spots on plinth stone			

Inscription/engraving:

IN MEMORY OF  
ALEX<sup>r</sup> M<sup>c</sup>CULLOCH  
TENANT ARDCHOIR C KERERRA  
WHO DIED 21<sup>ST</sup> NOV 1868  
AGED 72 YEARS  
ALSO  
MARY LIVINGSTON  
HIS BELOVED WIFE  
WHO DIED 28<sup>TH</sup> MARCH 1879  
AGED 74 YEARS  
GRANE  
AND HIS DAUGHTER JANE

WHO DIED 26<sup>TH</sup> MAY 1879

AGED 1 YEAR & 8 MONTHS

ALSO OF

MARGARET MCCOWAN

WIFE OF ALLAN MCCOWAN

WHO DIED AT RERAY FARM KILNINVER

17<sup>TH</sup> NOV 1916 AGED 79 YEARS

ALSO THE ABOVE

ALLAN MCCOWAN, FARMER

WHO DIED AT RERAY KILNINVER

10<sup>TH</sup> JAN 1922, AGED 92 YEARS



#6





#7

Condition report

<b>Orientation</b> Facing East, Standing	<b>Material</b> grey sandstone	<b>Size</b> 180x60x14 cm	<b>Shape</b>  Curved top	<b>Local environment</b> grass to base of plinth, steep slope falling away behind (west)
<b>Facing</b> East				Photo ID
<b>Engraving?</b>	Inscription black letters but weathered			
<b>Damage</b>			<b>Lichen:</b> Minimal, possibly crustose brown and other growth	
<b>Remarks</b>	Some brown surface staining (fungus or lichen) on eastern face,			

Inscription/engraving:

ERECTED  
BY  
NEIL LIVINGSTON  
SYDNEY AUSTRALIA  
  
IN LOVING MEMORY OF HIS FATHER  
ARCHIBALD LIVINGSTON  
WHO DIED AT SPRINGRURN GLASGOW  
20<sup>TH</sup> NOVR 1860.  
AGED 73 YEARS  
AND MOTHER FLORA LIVINGSTON  
WHO DIED IN RUTHERGLEN GLASGOW  
27<sup>TH</sup> APRIL 1854

AGED ?8

AND HIS SISTERS AND BROTHERS

MARY, FLORA, JOHN, ALEXANDER

WHO DIED IN INFANCY

THEMA ...

#7



# Condition report

#8

Orientation	Material	Size	Shape	Local environment
Laying Flat	Sandstone	200x78 cm	Rectangle slab	Enclosing stone wall to W and S. Steep slope down on W end
Facing Upward				Photo ID 3486
Engraving?				
Damage	Deterioration-flaking one eighth		Lichen: white crustose and leprose lichen and foliose. Possibly some <i>Lecanora rupicola</i> .	
Remarks	Parts difficult to read due to weathering, but mainly moss grass covering inscription			

## Inscription/engraving:

ERECTED  
 ----- OF  
 -----  
 ..... 20<sup>th</sup> MAY  
 18.....AGED 38 YEARS  
 ALSO  
 HIS DAUGHTER.....WHO DIED  
 ON TH.....DEC  
 AC.....  
 BORN 31 ..... 55  
 DIED 13<sup>TH</sup> DEC<sup>R</sup> 1870  
 Agnes M<sup>AC</sup>CULLOUGH

Wife of ALEXANDER LIVINGSTON

.....

DIED.....

.....

#8



#9

Condition report

Orientation	Material	Size	Shape	Local environment
Upright headstone	grey sandstone	180x80x16 cm	Triangular top, rectangular stone and standing on a plinth	Grass touching the plinth, slope down behind (W) of stone.
Facing East				Photo ID 3488
Engraving?	Open Book/Bible in triangle, flanked by a single flower on the left and right. Bible surmounted with a			
Damage	Significantly cracked across the stone through the inscription		Lichen: One third has white large crustose, leprose and some foliose colonies on edges of inscribed face	
Remarks	Black mold on inscribed surface making some inscriptions difficult to see. Moss on top of the triangle. Grass/moss on the stone base, surface deterioration-flaking			

Inscription/engraving:

ERECTED  
BY THE FAMILY IN  
MEMORY OF THEIR FATHER  
DUGALD COWAN  
DIED AT CYLEN KERRERA 3[?]  
[?]BRUARY 1870 AGED 60 YEARS  
ALSO THEIR MOTHER  
EUPHEMIA M<sup>C</sup>KICHAN  
AT CYLEN 8<sup>TH</sup> AUGUST 1885  
-----*Crack across the stone*-----

ALSO THEIR SON  
 NEIL COWAN  
 DIED 17<sup>TH</sup> NOVEMBER 1[9]22  
 AGED 63 YEARS  
 AND HIS WIFE  
 [J]ARGARET M<sup>C</sup>KICHAN  
 DIED AT DERVAIG MULL  
 FEBRUARY 1950 AGED 89 YEARS

#9







#10

Condition report

Orientation	Material	Size	Shape	Local environment	
Laying	Grey sandstone	Possibly, 180x75 cm difficult to see	Rectangle slab	Grass to edges and grass and moss covering 66%	
Facing East					
Engraving?					
Damage					
Remarks	Grass/moss on the stone surface – covering two thirds no inscription visible.				

Inscription/engraving: None visible

#10



#11

Condition report

Orientation	Material	Size	Shape	Local environment	
Headstone standing	grey granite	170x55x13 cm	triangular top	Grass to base, steep slope down behind (to W)	
Facing East				IMGP 3490	
Engraving?					
Damage	Stone surface general deterioration-flaking causing loss of definition of the inscription		<b>Lichen;</b> Small patches white foliose lichen on east top edges possibly <i>Melanelixia fuliginosa</i> , <i>Palmitia saxatilis/sulcata</i> with white leprose and crustose patches on the bottom and plinth East face		
Remarks					

Inscription/engraving:

Erected  
In  
Loving Memory  
Of  
DUGALD PATERSON  
- - -BARSTEN TAYNIULT  
.....  
.....AGED 7(8) YEA-S  
.....  
.....

.....

#11



#12

Condition report

Orientation	Material	Size	Shape	Local environment	
Headstone erect	Grey sandstone	130x55x12 cm	Round top	Grass to base, slope down to rear (W).	
Facing East				Photo ID	IMGP3491
Engraving?					
Damage	Surface deterioration-flaking general erosion all over		<b>Lichens</b> ; many types of leprose and crustose, covering most of E face of stone, including Antler lichen <i>Pseudevernia furfuracea</i> , <i>Parmelia saxatilis</i> , <i>Opegrapha gyrocarpa</i> ,		
Remarks					

Inscription/engraving:

.....  
 .....[o][P]  
 .....PATERSON  
 .....E R S...  
 .....

#12



#13

#### Condition report

Orientation	Material	Size	Shape	Local environment
Headstone standing	Grey sandstone	108x69x15cm	Rounded top	Grass to base. Steep hill down behind(west) of stone.  Laying slab in front (E)
Facing East				Photo ID IMGP3493
Engraving?				
Damage			<b>Lichen:</b> many types with range of colours, large leprose and crustose colonies, including <i>Pseudevernia furfuracea</i> and <i>Parmelia sulcata</i> on E face	
Remarks	General surface deterioration  RM51 “By Hugh McCulloch and Mary Campbell, his spouse, their children, 1831”			

Inscription/engraving:



1831

Erected

by

Hugh McCulloch

and Mary Campbell, his spouse,

in memory of their children,



#13

#14

Condition report

<b>Orientation</b>  Headstone standing	<b>Material</b>  pink sandstone	<b>Size</b>  128x58x12 cm	<b>Shape</b>  Round top with point	<b>Local environment</b>  Grass to base steep slope down to rear (W).	
<b>Facing</b> East					
<b>Engraving?</b>	Ornamented three part border inside rounded top				
<b>Damage</b>	Small diagonal cracks 45° across entire E face		<b>Lichen:</b> few patches of leprose and crustiose, with foliose on edge of rounded top		

<b>Remarks</b>	<p>Surface moss and deterioration-flaking on stone edges central part of stone inscription weathered and difficult to read.</p> <p>RM: By John Livingstone, Ballimore, Loch Awe, his wife Euphemia Cowan died 12/9/1875 aged 59 years. His children Dugald, died February 1838 aged 5 months, Allan, September 1851 aged 1 year, Isabella, Isabella, October 1852 aged 5 years.</p>
----------------	---

Inscription/engraving:

ERECTED  
 BY  
 JOHN LIVINGSTON.  
 BALLIMORE LOCHAWA.  
 IN MEMORY OF HIS WIFE,  
 EUPHEMIA COWAN,  
 WHO DIED [?][?][?][?] SEPT 1875,  
 AGED 59 YEARS,  
 AND OF THEIR CHILDREN,  
 DUGALD DIED FEB 1838,  
 AGED 3 MONTHS  
 ALLAN, DIED SEPT 1851, AGED 1 YEAR.  
 ISABELLA, DIED OCT 1852,  
 AGED 5 YEARS



#14

#15

Condition report

<b>Orientation</b>  Headstone standing	<b>Material</b> grey sandstone	<b>Size</b>  118x58x12 cm	<b>Shape</b>  Round top	<b>Local environment</b>  Grass to base	
<b>Facing</b> East				Photo ID IMGP3496	
<b>Engraving?</b>	Crenellated border inside rounded top and down edges to ground level				
<b>Damage</b>			<b>Lichen:</b> Grey and white crustose and leprose including <i>Opegrapha gyrocarpa</i> or <i>Porpidia platycarpoides</i> and <i>Lecanora rupicola</i> .		
<b>Remarks</b>	Grey and white lichen and moss on E face, edges and sides making inscription difficult to read.  RM 47 By Malcolm swan-his father John Swan, elder died, Ardintallon 27/4/1844 aged 83 years				

Inscription/engraving:

ERECTED  
  
BY  
  
MALCOLM SWAN  
  
IN MEMORY OF HIS  
  
FATHER JOHN SWAN  
  
ELDER WHO DIED AT  
  
ARDINTALLIN APRIL 27  
  
1844 AGED 83 YEARS



#15





#16

# Condition report

Orientation	Material	Size	Shape	Local environment	
Headstone standing	Black granite/marble	160x20x14 cm	Double curved (angel wing) top and ornament canvas	Grass to base	
Facing East				Photo ID IMGP3500	
Engraving?	Floral border at top edges to straight engraved border around edges.				
Damage			Lichen: Few small patches foliose at top, and leprose crustose on base plinth, with Antler lichen ( <i>Pseudevernia furfuracea</i> , <i>Parmelia saxatilis</i> and <i>Opegrapha gyrocarpa</i> ).		
Remarks	Surface moss and lichen at top and bottom, some growth on inscription making difficult to read.				

## Inscription/engraving:

ERECTED BY  
 JOHN MCCULLOCH  
 Joiner [ ] [ ] [ ]  
 IN Memory of  
 H[?][?][?][?][?][?][?]  
 NEIL MCCULLOCH Miller,  
 DIED AT AUCHNA[?][?][?][?] JAN1880  
 AGED 89  
 AND OF HIS [ ] [ ] [ ] [ ]  
 JANET M<sup>C</sup>DOUGALL  
 DIED at OBAN [ ] [ ] [ ] 71, AGED 67  
 AND HIS [ ] [ ] [ ] [ ]  
 CATHERINE

WHO DIED AT OBAN[ ] [ ] 185[3].

AGNES

DIED AT AUCHNA[ ] [ ] [ ] JAN. 1880

SARAH

DIED AT AUSTRALIA JULY 1873

MARY

DIED AT OBAN 27TH NOV18[1[1] AGED78

ALSO HIS WIFE

BETSY CAMPBELL

AND TWO INFANT CHILDREN

DIED AT OBAN 4<sup>TH</sup> M[?][?][?][?][?] 1879 AGED29

THE ABOVE

JOHN McCULLOCH

DIED AT BAYVIEW HOTEL, OBAN,

7TH SEPT, 1923, AGED 84 YEARS



#16

#17

Condition report

<b>Orientation</b>  Headstone standing	<b>Material</b>  Grey granite	<b>Size</b>  115x70x8 cm	<b>Shape</b>  Tri curved top	<b>Local environment</b>  Grass to base	
<b>Facing</b> East					
<b>Engraving?</b>	Inverted horseshoe in circle inside curved top				
<b>Damage</b>	Generally weathered/worn		Lichen: crustose and leprose patches over most of E surface.		
<b>Remarks</b>	Inscription face covered with lichen and moss and weathered, making inscription difficult/impossible to read. Obviously in 1972 it was possible to read more of the inscription.  RM36 John Swan, smith, Kilmore died 12/5/1820 aged 49 years				

Inscription/engraving:

IN MEMORY OF

[?]OHN [?][?][?][?]

[?][?][?][?] [?][?][?][?][?]RE

DIED [?][?][?][?][?][?][?][?]

[?][?][?][?] YEARS



#17

#18

Condition report

<b>Orientation</b>  Headstone standing	<b>Material</b>  grey sandstone	<b>Size</b>  90x60x12 cm	<b>Shape</b>  Triangular top	<b>Local environment</b>  Grass to base tree and steep hill down close to S edge	
<b>Facing</b> East				PHOTO ID IMGP3502	
<b>Engraving?</b>	May have a date underneath the lichen in the triangle at the top but impossible to see				
<b>Damage</b>			Lichen: mainly leprose and crustose, including <i>Lecanora rupicola</i> with a small amount of foliose, but species not determined		
<b>Remarks</b>	Moss and lichen cover most of the stone  RM37a John Sinclair, tenant Strontoller aged 69 years, and his wife Mary McLachlan aged 58				

Inscription/engraving:

IN MEMORY OF  
  
JOHN SINCLAIR  
  
Tenant Strontoller  
  
Aged 69 years  
  
And his wife  
  
MARY MCLACHLAN  
  
Aged 58 years



#18



#19

Condition report

Orientation	Material	Size	Shape	Local environment	
Headstone standing	Grey sandstone	168x66x17 cm	triangular top	Grass to base	
Facing East				PHOTO ID IMGP3504	
Engraving?					
Damage			Lichen: Leprose and crustose mainly on N edge. Some foliose, on E face and triangular top, possibly <i>Parmellina pastillifera</i> , <i>Parmelia saxatilis</i> and <i>sulcata</i> .		
Remarks	Surface white lichen on Eastern face, round lichen on N face.  Deterioration-flaking two third inscription becoming weathered difficult to read				

Inscription/engraving:

IN MEMORY OF  
  
DUNCAN SINCLAIR  
  
FARMER. GULNADALLACH  
  
WHO DIED 17<sup>TH</sup> NOVR 1867  
  
AGED 94 YEARS  
  
OF HIS WIFE  
  
ANNE SINCLAIR  
  
WHO DIED 8th MARCH 1882  
  
AGED 77 YEARS  
  
THEIR DAUGHTER  
  
[I]SABELLA

WHO DIED [?][?] MARCH 187[8]

AGED [2][8] YEARS

AND THEIR SON MALCOLM

WHO DIED [?][?][?][?]



#19

#20

Condition report

<b>Orientation</b>  Headstone  standing	<b>Material</b>  Pink sandstone	<b>Size</b>  168x66x17 cm	<b>Shape</b>  Top not in photo rectangular	<b>Local environment</b>  Grass to base	
<b>Facing</b> East				PHOTO ID IMGP 3505	
<b>Engraving?</b>	Top section deteriorated, lichen covering top triangular section which has 3 feathers or leaf motif.				
<b>Damage</b>	General erosion		Lichen: Small patches orange leprose and large regions of foliose including <i>Parmelia sulcata</i>		
<b>Remarks</b>	Surface deterioration-flaking two third, surface badly worn, covered in lichen and some moss.  RM 45 Malcolm Sinclair died Balgowan 29/1/1849 aged 27 years. By his wife Lucy L Sinclair, November 1849. She died 1/6/1900 , aged 80 years				

Inscription/engraving:

□□□□

MALCOLM SINCLAIR

□□□□□□ □□□ □□

□□ □□□ □□□

.....



#20

#21

Condition report

Orientation	Material	Size	Shape	Local environment	
Headstone upright	Grey sandstone	65x35x5 cm	Small rectangular unusually narrow	Grass to base	
Facing West				PHOTO ID IMGP3508	
Engraving?					
Damage			Lichen: Crustose,leprose and foliose including <i>Parmelia saxatilis</i> with <i>Parmelia glabratula</i> and <i>Anaptychia runcinata</i>		
Remarks	Covered with crustose lichen and weathered so difficult/impossible to read				

Inscription/engraving:

M[ ] [ ] [ ] NNE

TANN[ ] [ ] [ ] BA



#21



#22

Condition report

<b>Orientation</b>  Headstone  Erect	<b>Material</b>  grey granite	<b>Size</b>  120x55x16 cm	<b>Shape</b>  Triangular top rectangular on plinth	<b>Local environment</b>  Grass to base	
<b>Facing</b> East					
<b>Engraving?</b>	'1871' in triangle				
<b>Damage</b>			Lichen; Mainly leprose and crustose with small amounts of foliose, <i>Parmelia sulcata</i> .		
<b>Remarks</b>	White and grey lichen on eastern face, moss on top and on plinth. Engraving becoming worn. RM44b 1871 By Angus Campbell, contractor, Oban – his father Donald Campbell, flesher, Oban, his mother Mary Campbell also of his children, Neil and Mary				

Inscription/engraving:

1871

ERECTED BY

ANGUS CAMPBELL,

CONTRACTOR, OBAN

IN MEMORY OF HIS FATHER

DONALD CAMPBELL,

FLESHER OBAN,

AND HIS MOTHER

MARY CAMPBELL

ALL OF HIS CHILDREN,

NEIL AND MARY





#22



#23

Condition report

Orientation	Material	Size	Shape	Local environment	
Headstone	Grey granite	180x80x16 cm	Pointed arched top	Inside chained enclosure grass to base	
Facing East				PHOTO ID IMGP 3511	
Engraving?	Floral emblem in circle in pointed arch and rosettes at edges of the arch				
Damage	Horizontal crack across middle		Lichen: some Leprose and foliose white/grey on top and N & S edges few leprose patches on E face as well as brown fungus.		
Remarks	Some lichen around edges  RM44a By D Campbell, Blacksmith, his father Angus Campbell, contractor died 2/4/1884 aged 59 years, his mother Catherine McIntyre died 22/10/1903 aged 72 years				

Inscription/engraving:

ERECTED BY  
  
DONALD CAMPBELL  
  
BLACKSMITH  
  
IN LOVING MEMORY OF  
  
HIS FATHER  
  
ANGUS CAMPBELL  
  
CONTRACTOR  
  
WHO DIED 2<sup>ND</sup> APRIL 1884  
  
AGED 59 YEARS  
  
AND HIS MOTHER  
  
CATHERINE M<sup>C</sup>INTYRE  
  
WHO DIED 22<sup>ND</sup> OCTOBER 1909  
  
AGED 72 YEARS

#23



#24

Condition report

Orientation	Material	Size	Shape	Local environment
Headstone upright	Pink granite	136x32x12 cm	Semicircular top surmounted by 'anvil'shape obelisk-top	Grass to base, eroding slipping hill to S edge
Facing East				PHOTO ID IMGP 3521
Engraving?	Simple border			
Damage	Surface worn and crumbling, inscription difficult to read		Large colonies of white lichen, generalised leprose and crustose lichen round and on the edges and edge of face. Crustose and foliose to bottom of main stone.	
Remarks				

Inscription/engraving:

ERECTED BY  
JOHN M<sup>c</sup>DOUGALL  
IN MEMORY OF HIS FATHER  
ALEX. M<sup>c</sup>DOUGALL  
KERRERA  
DIED 8<sup>th</sup> M---18  
AGED 50 YEARS  
AND HIS MOTHER SARAH M<sup>c</sup>DOUGALL  
DIED 30<sup>th</sup> APRIL 1881 AGED 35 YEARS  
ALSO THE ABOVE  
JOHN MCDUGALL

1<sup>ST</sup> JULY 1891 AGED -- YEARS

#24





#25

Condition report

Orientation	Material	Size	Shape	Local environment	
Headstone upright	Pink granite	200x65x19 cm	Two stone Ornate obelisk floriated top	Grass to base Degrading slope down on southern edge	
Facing East				PHOTO ID IMGP 3522	
Engraving?	In top panel: wreath and ribbons (banner)				
Damage			<b>Lichen:</b> Large colonies of white/grey crustose and leprose lichen, some patches white antler lichen ( <i>Pseudevernia furfuracea</i> ) and <i>Usnea</i> possibly <i>hirta</i>		
Remarks					

Inscription/engraving:

IN MEMORY  
OF  
DUGALD MACDOUGAL  
MERCHANT OBAN  
WHO DIED 8<sup>TH</sup> DECEMBER  
AGED 78 YEARS  
AND OF HIS SONS DONALD MACDOUGAL  
WHO DIED ON INFANCY  
ANGUS MACDOUGAL  
IRON MERCHANT NEW –ORK

WHO DIED 19<sup>TH</sup> MARCH 185-

AGED 24 YEARS

DUNCAN MACDOUGAL

IRON MERCHANT NEW YORK

WHO DIED 14<sup>TH</sup> OCT<sup>R</sup> 1857

AGED 34 YEARS



#26

Condition report

Orientation	Material	Size	Shape	Local environment	
Upright	Metal (iron?)	60x50x4 cm	Small rectangle	Grass to base	
Facing East				PHOTO ID 3532	
Engraving?	Ornate top straight sides				
Damage					
Remarks	Looks rusted				

Inscription/engraving: None

#26



#27

Condition report

Orientation	Material	Size	Shape	Local environment	
Headstone Standing	Grey Sandstone	110x78x13 cm	Rectangle	Grass to base	
Facing East				PHOTO ID 3534	
Engraving?					
Damage			Lichen: White crustose and foliose lichen patches at edges of east face, possibly including <i>Phaeophyscia</i>		
Remarks	RM40b 1839 Margaret Livingston died at Oban, 8/4/1837 aged 49 years. Her son Duncan MacDougall died Oban 9/2/1831 aged 18 years. By her sons Donald and John MacDougall				

Inscription/engraving:

SACRED TO THE MEMORY OF

MARGARET LIVINGSTON

Who Died at Oban

On the 8<sup>th</sup> April 1837

Aged 49 years

And her son

Duncan MacDougall

Who died at Oban

On the 9<sup>th</sup> February 1831

Aged 18 years

By her sons Donald and John MacDougall

#27



#28

Condition report

<b>Orientation</b>  Standing  Obelisk	<b>Material</b> Sandstone	<b>Size</b>  135x66x29  Main plus top sections	<b>Shape</b>  Pyramid/anvil shape on top of columnar main stone	<b>Local environment</b>  Grass to base	
<b>Facing</b> East				PHOTO ID 3537	
<b>Engraving?</b>					
<b>Damage</b>			Lichen: White crustose and foliose patches on east face and covering S edge and E obelisk top		
<b>Remarks</b>	RM40a Alexander MacDougall, builder, Oban, died 1/3/1861 aged 57 years, his spouse Catherine Campbell 9/8/1871 aged 66 years				

Inscription/engraving:

IN MEMORY OF  
ALEXANDER M<sup>C</sup>DOUGALL,  
BUILDER, OBAN,  
WHO DIED 1<sup>ST</sup> MARCH 1861  
AGED 57 YEARS,  
AND HIS SPOUSE  
CATHERINE CAMPBELL  
WHO DIED 9<sup>TH</sup> AUGUST 1871  
AGED 66 YEARS





#28



# #29 Condition report

<b>Orientation</b> Flat	<b>Material</b> Grey Sandstone	<b>Size</b> 200x78 cm	<b>Shape</b> Rectangular parallel sided slab	<b>Local environment</b> <u>Grass</u> to and overlapping edges	
<b>Facing</b> East				PHOTO ID 3538	
<b>Engraving?</b>	Top panel containing worn carvings with figures flanking the armorial small male figure on left holding a spear in right hand and left hand on sheathed sword, small female figure on right but engravings on heraldic here degraded or completely ablated. At the bottom of the panel are the remains of a galley, the hull is just discernable				
<b>Damage</b>					
<b>Remarks</b>	<p>Reported as top section (of three fallen and trampled) of the cross mentioned in the Catalogue of rubbings Number 2 held at Inverary castle archives and noted in X. (J) 1." The 1693 cross, to the memory of Alexander MacDougall of Corrilorne who Obiit. Jan. 12, 1623. Blazon apparently at top of cross. To right, a female figure; to left a kilted warrior, spear in right hand, left on sword, free delicate leafage above, date 1693 on left". We feel that this is a confusion with the Lerag cross</p> <p>RM43 b Alexander McDougal of Corrilorne died 19 January 1693</p>				

Inscription/engraving:

ALEXANDER M<sup>c</sup>DOUGAL  
 OF CORRILORNE WHO DEPARTED  
 THIS LIFE JANUARY 19—1693  
 AGE 34  
 LIVE TO LIT... WE LIVE  
 .....TO LIVE ETERNALY



#29

#30

Condition report

Orientation	Material	Size	Shape	Local environment
Laying Flat	Slate	178x50 cm	Tapering slightly	Grass to and covering edges
Facing East				PHOTO ID 3543
Engraving?				
Damage			Lichen: small occasional patches crustose lichen.	
Remarks	RM37 Here lies remains of Archibald Sinclair died the 25/4/1803, age unreadable			

Inscription/engraving:

Here lies remains  
of Archibald Sinclair  
departed this life 25 april  
1803 aged

#30



#31

Condition report

<b>Orientation</b>  Laying Flat	<b>Material</b>  Slate	<b>size</b>	<b>Shape</b>  Tapered slab	<b>Local environment</b>  Grass to edge	
<b>Facing</b> East				PHOTO ID 3544	
<b>Engraving?</b>	Blackletter Inscription				
<b>Damage</b>			Lichen: small patches white crustose		
<b>Remarks</b>	RM35 Nichol McDougall, son of Alexander McDougall and Mary McMillan of Dunach born 29/11/1818 died 27/4/1834				

Inscription/engraving:

IN MEMORY  
of  
NICHOL M<sup>C</sup>DOUGALL,  
son of  
ALEXANDER M<sup>C</sup>DOUGALL  
and  
Mary McMillan  
of Dunach who  
was born 29<sup>TH</sup> November 1818  
died 27<sup>TH</sup> MAY  
1834

#31



#32

Condition report

Orientation	Material	Size	Shape	Local environment	
Laying	Sandstone	200x65 cm	Tapering slightly	Grass and moss to edges	
Facing East				PHOTO ID 3547	
Engraving?					
Damage					
Remarks	Covered in moss impossible to read				

Inscription/engraving:

ARCHIBALD McDOUGALL

#32





#33

Condition report

Orientation	Material	Size	Shape	Local environment
Flat Laying	Sandstone	200x70 cm	Tapering slightly	Surrounded by grave slabs
Facing East				PHOTO ID 3549
Engraving?				
Damage			Lichen:	



<b>Remarks</b>	Covered in moss difficult to read
----------------	-----------------------------------

Inscription/engraving:

--

--

--

--

--AGED

AND THEIR SON

#33



#34

Condition report

<b>Orientation</b>	<b>Material</b>	<b>Size</b>	<b>Shape</b>	<b>Local environment</b>
	Grey	158x68 cm	Tapering slightly	Grass to edges and partially

Horizontal	Granite			covering, grave slab to S	
Facing East					
Engraving?					
Damage			Lichen: 25% white crustose lichen covered, some brown algae		
Remarks					

Inscription/engraving:

Erected by A&M Munn

--- memory of their Father who died

27<sup>th</sup> Jan 1838 Aged 53 years.

Also his spouse ANN McLUCAS

Who died 25<sup>th</sup> Jan 1845 Aged 60 years

#34



#35

Condition report

<b>Orientation</b>  Flat	<b>Material</b>  Slate	<b>Size</b>  150x36 cm	<b>Shape</b>  Tapering slightly	<b>Local environment</b>  Grass to edges	
<b>Facing</b> East					
<b>Engraving?</b>					
<b>Damage</b>			Lichen: Some white crustose and leprose lichen		
<b>Remarks</b>	RM 41a Archibald Munn Longiston, Oban, died 16/2/1887 aged 78 years. His wife Christine Paterson died Longiston 8/5/1898 aged 87 years, their son John, died Oban 2/8/1880 aged 34 years, his sons Archibald died in infancy. John died at Crieff 28/5/1907 aged 23 years				

Inscription/engraving:

SACRED TO THE MEMORY OF  
  
ARCHIBALD MUNN  
  
LONGISTON, OBAN  
  
DIED 16<sup>TH</sup> FEBRUARY 1887  
  
AGED 78 YEARS  
  
HIS WIFE  
  
CHRISTINE PATERSON  
  
DIED LONGISTON  
  
8<sup>th</sup> May 1898 AGED 87 YEARS  
  
ALSO

THEIR SON JOHN

DIED OBAN

2<sup>ND</sup> AUGUST 1880 AGED 34 YEARS

HIS SONS

ARCHIBALD DIED IN INFANCY

JOHN DIED AT CRIEFF

28<sup>TH</sup> MAY 1907 AGED 23 YEARS

#35



#36

Condition report

<b>Orientation</b> Laying flat	<b>Material</b> Grey sandstone and granite	<b>Size</b> 150x68 cm	<b>Shape</b> Parallel sided slab	<b>Local environment</b> Grass to edges	
<b>Facing</b> East				PHOTO ID IMGP3554	
<b>Engraving?</b>					
<b>Damage</b>					
<b>Remarks</b>	Some moss patches at edges				

Inscription/engraving:

IN MEMORY OF  
ALEXANDER GRAHAM  
TAXMAN OF BARBRECK, CRAIGNISH  
WHO DIED  
-- NOVEMBER 1851, AGED 53 YEARS  
AND HIS WIFE  
LILLIAS SINCLAIR  
WHO DIED  
12<sup>TH</sup> FEBRUARY 1883, AGED 78 YEARS  
ALSO THEIR SONS  
ALEXANDER WHO DIED IN NEW ZEALAND  
-- OCTOBER 1878 AGED 38 YEARS  
DUNCAN WHO DIED IN SOUTH AFRICA  
26<sup>TH</sup> NOVEMBER 1883, AGED 49 YEARS  
JOHN, WHO DIED IN NEW ZEALAND

7<sup>TH</sup> JUNE 1898, AGED 66 YEARS

---

ERECTED BY THE FAMILY OF

MRS SARAH M<sup>C</sup>CALLUM

#36



#37

Condition report

<b>Orientation</b>  Laying flat	<b>Material</b>  Slate	<b>Size</b>  182x65	<b>Shape</b>  Tapering slightly	<b>Local environment</b>  Grass to edges	
<b>Facing</b> East				PHOTO ID IMGP3557	
<b>Engraving?</b>					
<b>Damage</b>			Lichen: few patches white crustose		
<b>Remarks</b>	RM34 Here layes the family of John Livingston, mariner from Oban 1807				

Inscription/engraving:

HERE LAYES THE  
FAMILY of JOHN  
LIVINGSTON,  
MARINER FROM  
OBAN  
1807

#37





#38

#### Condition report

Orientation	Material	Size	Shape	Local environment	
Headstone upright	Sandstone (brown)	150x60x14 cm	Rectangular	Grass to base	
Facing East				PHOTO ID IMGP 3559	
Engraving?	Flanked on edges and topped with carved stone vine trunks/branches				
Damage	Weathered surface		Lichen: White crustose and foliose lichen patches		
Remarks	The inscription is difficult to read due to general weathering and many small patches of lichen.				

Inscription/engraving:

-----

-----

CHRISTINA MCCALLUM

WHO DIED 14<sup>TH</sup> ----- 190-

-

-

-

-

JOHN McALLUM

-

-

#38



#39

Condition report

<b>Orientation</b>  Headstone upright	<b>Material</b> Sandstone	<b>Size</b>  132x60x14 cm	<b>Shape</b>  Rounded Top	<b>Local environment</b>  Grass to base	
<b>Facing</b> East				PHOTO ID IMGP3561	
<b>Engraving?</b>	Three rounded arch border in rounded top border to ground				
<b>Damage</b>	Weathered surface		Lichen: Some large patches white crustose		
<b>Remarks</b>	Very eroded surface, inscription impossible to read				

Inscription/engraving:

DIED [] [] [] [] [] [] [] [] [] []

SAR[] [] [] [] [] [] [] [] [] []

DIED[] [] [] [] [] [] [] [] [] []

JOHN [] [] [] [] [] [] [] [] [] []

DIED

[[[]

DIED

CA[] [] [] [] [] [] [] [] [] []

#39



#40

Condition report

Orientation	Material	Size	Shape	Local environment
Headstone upright	Sandstone	130x55x14 cm	Rounded top	Grass to base  Railed enclosure
Facing East				PHOTO ID IMGP 3562
Engraving?	Three rounded arch border in round top			
Damage	Very eroded surface circular flaking/rusting lower left		Lichen: White crustose and foliose, <i>Parmelia sulcata</i> , round top edges	
Remarks	Inscription difficult to read			

Inscription/engraving:

ERECTED  
IN MEMORY OF  
ANGUS MCLUCAS  
----- OBAN  
-----AUGUST 1869  
-----  
-----STEVENSON  
-----1868  
-----  
-----  
-----1868

#40



#41

Condition report

Orientation	Material	Size	Shape	Local environment	
Headstone upright	Sandstone	132x59x14 cm	Rounded top	Railed enclosure	
Facing East					
Engraving?	Black letter inscription, simple border inside rounded top				
Damage			Lichen: white crustose and foliose ( <i>Parmelia sulcata</i> ), black leprose/fungus		
Remarks	White and Grey lichen covering top two thirds making inscription difficult to read				

Inscription/engraving:

IN MEMORY

-----

DONALD MACLUCAS

-----

-----

-----

-----

-----

-----

-----

HIS DAUGHTER CATHERINE MARY AND

CATHERINE --- WHO

DIED IN CHILDHOOD

SARAH MCLELLAN

WIFE OF THE ABOVE



DONALD MCLUCAS

WHO DIED 13<sup>TH</sup> JAN 1889

AGED 80 YEARS

#41



#42

Condition report

<b>Orientation</b>  Headstone upright	<b>Material</b> Sandstone	<b>Size</b>  132x60x15 cm	<b>Shape</b>  Rounded top two plinth stones at base.	<b>Local environment</b>  Grass to base	PHOTO ID IMGP 3842
<b>Facing</b> East					
<b>Engraving?</b>	Three semicircle border in rounded top. Pick and axe in rounded top				
<b>Damage</b>			Lichen: white crustose at edges orange foliose ( <i>Xantharia</i> ) on plinth stone		
<b>Remarks</b>	Moss at base and edges				

Inscription/engraving:

ERECTED BY  
JOHN AND ARCH<sup>D</sup> M<sup>C</sup>INTYRE  
IN MEMORY OF THEIR FATHER  
ARCHIBALD M<sup>C</sup>INTYRE  
JOINER,  
WHO DIED AT TOBERONCHYLUING  
8<sup>th</sup> SEPTEMB<sup>R</sup> 1872. AGED 70 YEARS,  
ALSO, THEIR BROTHER,  
DUNCAN,  
--APRIL 1830 AGED 11 MONTHS  
ALSO THEIR MOTHER MARY M<sup>C</sup>CALMAN

-----

#42



#43 Condition report

Orientation	Material	Size	Shape	Local environment	
Headstone upright	Black/grey marble	180x65x14cm	Rectangle	Grass to base	
Facing East				PHOTO ID IMG 1775	
Engraving?	Black letter				
Damage					
Remarks					

Inscription/engraving:

DUNCAN M<sup>C</sup>INTYRE  
 FARMER TORINTURK  
 WHO DIED 12<sup>TH</sup> AUG 1888  
 AGED 13 YEARS  
 AND OF MARY MCBULL -----  
 WHO DIED AT TORINTURK  
 AND THEIR FAMILY  
 JOHN WHO DIED AT GLASGOW  
 ARCHIBALD  
 WHO DIED AT TORINTURK  
 DUNCAN

#43



#44

Condition report

<b>Orientation</b> Laying Flat	<b>Material</b> Grey Sandstone	<b>Size</b> 180x55 cm	<b>Shape</b> Parallel sided	<b>Local environment</b>  Grass to edges and covering	
<b>Facing</b> East				PHOTO ID	IMGP 3569
<b>Engraving?</b>					
<b>Damage</b>					
<b>Remarks</b>					

Inscription/engraving:

AMP

#44



#45

#### Condition report

Orientation	Material	Size	Shape	Local environment
Laying Flat	Slate	178x43 cm	Tapering slightly	Grass to edges and covering all but bottom
Facing East	Medieval slab			PHOTO ID IMGP 3587
Engraving?	Slab narrowing to the bottom, double roll moulding and nail-head ornament round the edges, on viewers right sword with reverse guard, worn pommel. Top left three creatures entwined in a triangle. Down left side foliageous scrolls with triquetra filling between the scrolls and the sword			
Damage			Lichen: white crustose and leprose lichen on exposed bottom end	
Remarks	The slab is generally worn but particularly at the top and bottom. The bottom is exposed and appears to be walked on frequently.			



--	--

Inscription/engraving: None



#45

#46

Condition report

Orientation	Material	Size	Shape	Local environment	
Horizontal	Slate	110x65 cm	Slab	Grass to edges and over the slab	
Facing East				PHOTO ID IMGP 3572	
Engraving?					

<b>Damage</b>			White and grey lichen crustose on some of the surface
<b>Remarks</b>			

Inscription/engraving:

DUNCAN MACINTYRE  
WHO DEPARTED THIS LIFE  
SEPTEMBER TH 15:1774 AGED –  
THIS TOMB STONE IS PLACED  
HERE BY DUNCAN WRIGHT  
1781

#46



#47

Condition report

<b>Orientation</b>	<b>Material</b>	<b>Size</b>	<b>Shape</b>	<b>Local environment</b>
Headstone	Sandstone	120x60x14	Semi-circular top	Grass to base, naturalised bulbs in

upright		cm		front, tree overhanging	
Facing East					
Engraving?					
Damage	General significant surface damage, flaking		Lichen: Large patches white and grey lichen crustose and leprose. Patches of <i>Cladonia rangiformis</i> , <i>Pseudevernia furfuracea</i>		
Remarks	Moss around the edges  RM31(a) John McDougall late tenant Balimore, Kerrera died August 1848 aged 74 years and his wife Mary Campbell died January 1867 aged 77 years				

Inscription/engraving:

ERECTED  
  
 IN MEMORY OF  
  
 JOHN MCDUGALL LATE TENANT BALIMORE,  
  
 KERRERA DIED AUG 5TH 1848  
  
 AGED 74 YEARS  
  
 AND HIS WIFE  
  
 MARY CAMPBELL  
  
 DIED JANUARY 1867 AGED 77 YEARS

#47



#48

Condition report

Orientation	Material	Size	Shape	Local environment
Headstone upright	Sandstone	95x60x15 cm	Rounded at top	Grass to base and naturalised bulbs in front. Grave slabs behind.
Facing East				PHOTO ID IMGP3575
Engraving?				
Damage			Lichen: White and yellow crustose and leprose	
Remarks	Moss round edges.			

Inscription/engraving:

ERECTED  
IN LOVING REMEMBRANCE OF  
ALEXANDER MACDOUGAL  
POSTMASTER  
WHO DIED AT KILNINVER  
2<sup>ND</sup> MARCH 1892  
AGED 78 YEARS  
AND HIS WIFE  
JESSIE MITCHELL  
WHO DIED 17<sup>TH</sup> JANUARY 189-  
AGED 87 YEARS



#48



#49

Condition report

Orientation	Material	Size	Shape	Local environment	
Flat laying	Slate	182x65cm	Parallel slab	Grass to edges and over surface	
Facing East				PHOTO ID IMGP3619	
Engraving?					
Damage					
Remarks					

Inscription/engraving:

AMI

#49



#50

Condition report

Orientation	Material	Size	Shape	Local environment	
Headstone upright	Granite	215x91x18 plinth 106x95	Circular ornamental scroll top	Grass to base	
Facing East				PHOTO ID IMGP 3625	
Engraving?	Border round edges to base				
Damage					



Remarks	Badly weathered face difficult to read inscription
---------	--

Inscription/engraving:

ERECTED  
 IN  
 THE MEMORY OF  
 DONALD M<sup>C</sup>INTYRE  
 -----  
 -----  
 DIED -----  
 -----  
 JANET M<sup>C</sup>-----  
 -----  
 DIED AT -----  
 -----  
 ----- 1913

#50



#51

Condition report

<b>Orientation</b>  Flat laying	<b>Material</b>  Slate	<b>Size</b>  200x78 cm	<b>Shape</b>  Parallel sided slab	<b>Local environment</b>  Grass to edges and covering	
<b>Facing</b> East				PHOTO ID IMGP 3588	
<b>Engraving?</b>					
<b>Damage</b>			<b>Lichen:</b> White and grey crustose and leprose, brpwn leprose		
<b>Remarks</b>	White and grey lichen				

Inscription/engraving:

IN MEMORY OF  
DONALD M<sup>C</sup>INTYRE  
FARMER DALINTARI  
WHO DIED 25 APRIL 1854  
AGED 67 YEARS  
AND OF HIS WIFE  
MARY M<sup>C</sup>NIVEN  
WHO DIED 14<sup>TH</sup> OCTOBER 186?  
AGED 65 YEARS

#51



#52

Condition report

Orientation	Material	Size	Shape	Local environment	
Headstone upright	Sandstone	120x55x13	Stone on plinth	Grass to base	
Facing East				PHOTO ID IMGP 3577	
Engraving?					
Damage			Lichen: White leprose, crustose and foliose, <i>Parmelia spp.</i> possibly <i>sulcata</i> . Orange/brown lepros.		
Remarks	Covered in moss at the edges				

Inscription/engraving:

ERECTED BY  
ROBERT BUCHANAN  
IN MEMORY OF HIS MOTHER  
JEAN MCARTHUR  
DIED AT MELFORD 3<sup>RD</sup> MARCH 1858  
AGED 76 YEARS  
JOHN BUCHANAN HIS FATHER  
DIED AT BENDERLOCH 5<sup>TH</sup> APRIL 1868  
AGED 87 YEARS  
AGNES BUCHANAN HIS NEICE  
DIED AT BENDERLOCH 12<sup>TH</sup> MAY 1868  
AGED 22 YEARS  
ALSO

PETER BUCHANAN HIS BROTH<sup>R</sup>  
DIED -- OCT<sup>R</sup> 1881 AGED 62 YEARS

#52



#53

Condition report

Orientation	Material	Size	Shape	Local environment	
Headstone  Fallen forward		120x65x16 cm	Parallel sided	Grass and edge of small slop up and down	
Facing unknown				PHOTO ID IMGP 3591	
Engraving?					
Damage	Fallen vertical stone and plinth				
Remarks	Covered in Moss  No Inscription visible				

Inscription/engraving: None visible-laying on face

#53





#54

Condition report

Orientation	Material	Size	Shape	Local environment	
Flat Laying	Slate	0.75x0.375	Small parallel sided slab	Grass to base and over edges and bottom	
Facing East				PHOTO ID IMGP 3592	
Engraving?					
Damage					
Remarks					

Inscription/engraving:

AMI

#54



#55

Condition report

Orientation	Material	Size	Shape	Local environment	
East Laying	slate	160x55cm	Parallel sided	Grass covered	
Facing East				PHOTO ID IMGP3593	
Engraving?					
Damage					
Remarks	At edge of small slope, surrounding soil falling away, this could be in danger of slipping/falling down the slope				

Inscription/engraving:

Alexand<sup>r</sup> M<sup>c</sup>Dougall

#55



Condition report

#56

Orientation	Material	Size	Shape	Local environment
Flat laying	Slate	190x70cm	Parallel sided	Railing to north, laying slabs surrounding
Facing East				PHOTO ID IMGP 3593
Engraving?				
Damage			Lichen: white and large grey diffuse crustose lichen patches	



Remarks	Cursive script,
---------	-----------------

Inscription/engraving:

*John McCullo c/g*

*Joiner*

*Oban*

#56



#57

Condition report

Orientation	Material	Size	Shape	Local environment
Flat Laying	Sandstone		Parallel sided Rectangular	Grass to edges and covering,

				surrounded by laying slabs
<b>Facing</b> East				PHOTO ID IMGP3656
<b>Engraving?</b>				
<b>Damage</b>				
<b>Remarks</b>	Black fungus patches under grass. Inscription in Gaelic, last few names on bottom not Gaelic			

Inscription/engraving:

CARRAGH-CUIMHNE  
TEAGHLAICH

IAIN DUGHALL

CAIRISDINA NIC

A BHEAN

BARRA(IGH)

DEIRRA ANNA

CARRAOH CUMHE

J/iEAGHLAIC/gh

IAN DU\_/d\_/mALLAigh

-----

CARAISDINA NIC

A BHEAN

Bea-ch----- a5 MHLA

CHEID/c MA/u.....EARRA

-----

.....I/mE/hAC

AN FAIR

AG/cUS MAL

A C

AN 'S 'Y

DEIRREANTTAIT

-THE

JOHN

DI

---

#57



#58

Condition report

Orientation	Material	Size	Shape	Local environment	
Laying Flat	Grey Sandstone	200x78 cm	Parallel sided-rectangle	Grass covered	
Facing East				Photo ID IMGP3713	
Engraving?					
Damage			Lichen: White crustose patches		
Remarks	RM54b Donald McCulloch, baker, Oban died 4/2/1867 aged 49 years, his sons Donald died 8 December 1863 aged 3 years. Angus died 16/7/1864 aged 16 months, his wife Barbara Sutherland died 8/1/1874 aged 47 years. John died in Edinburgh 10/2/1933 aged 74 years. Susan Cameron, wife of the above died Edinburgh 10/1/1933, aged 74 years, sons of the said John McCulloch, Iain Hugh killed in action in France 25/9/1915, Donald killed in action in France 2/8/1917				

Inscription/engraving:

Donald McCulloch, baker, Oban died 4 Feb 1867

aged 49 years,

his sons Donald died 8 December

1863 aged 3 years Angus

died 16<sup>th</sup> July 1864

aged 16 months, his wife

Barbara Sutherland

died 8<sup>th</sup> January 1874

aged 47 years.

*(John died in Edinburgh 10<sup>th</sup> Feb 1933 aged 74 years.*

*Susan Cameron, wife*

*of the above died Edinburgh 10<sup>th</sup> January 1933,*



*aged 74 years,*

*sons of the said John McCulloch,*

*Iain Hugh killed in action in France 25<sup>th</sup> Sept 1915,*

*Donald killed in action in France 2<sup>nd</sup> August 1917)*

#58



Condition report AMI-AGAIN???

#59

Orientation	Material	Size	Shape	Local environment	
Flat	Slate		Rectangle parallel sided slab	Grass to edges and covering	
Facing East					
Engraving?					
Damage					
Remarks					

Inscription/engraving:

AMI

#59





# Condition report

#60

Orientation	Material	Size	Shape	Local environment	
Flat	Slate	190x72 cm	Rectangle-parallel sides	On N-S slope	
Facing East					
Engraving?	None visible				
Damage					
Remarks					

Inscription/engraving: None

#60



# Condition report

#61

Orientation	Material	Size	Shape	Local environment	
Laying	Grey sandstone	190x70 cm	Parallel sided rectangle	Grass to edges surrounded by laying graveslabs	
Facing East					
Engraving?	None visible				
Damage					
Remarks	Covered in moss/grass, no obvious inscription. Part way down the SW edge of the hill which is slipping down. In danger of further slippage				

Inscription/engraving: None

#61





# Condition report

#62

Orientation	Material	Size	Shape	Local environment	
Laying	Slate	190x70 cm	Parallel sided slab	On slope slipping down to SW, grass to edges	
Facing East					
Engraving?	None visible				
Damage					
Remarks	Part way down the SW edge of the hill which is slipping down. In danger of further slippage				

Inscription/engraving: None

#62



#63

Condition report

Orientation	Material	Size	Shape	Local environment	
Horizontal	Slate	190x65 cm	Parallel sided slab	Grass to edges and covering	
Facing East				PHOTO ID IMGP3804	
Engraving?					
Damage			Lichen: Few patches of white crustose		
Remarks					

Inscription/engraving:

SACRED TO THE MEMORY OF  
DUGALD MCCULLOCH DIED 1849,  
ALSO HIS WIFE  
MARY MCINTYRE  
DIED 1857  
AND THEIR CHILDREN MATILDA  
DIED 1835 AGED 2 YEARS.  
DUNCAN 1838 AGED 2 YEARS  
CATHERINE 1851  
AGED 15 YEARS.  
JOHN 1872 AGED 13 YEARS.



#63



#64

Condition report

<b>Orientation</b> Flat Laying	<b>Material</b> sandstone	<b>Size</b> 110x75 cm	<b>Shape</b> Parallel sided, Rectangular	<b>Local environment</b>  Grass covered	
<b>Facing</b> East				PHOTO ID IMGP3807	
<b>Engraving?</b>	Remains of shield all carving inscription erased				
<b>Damage</b>	Most of carving erased				
<b>Remarks</b>					

Inscription/engraving: None

#64



#65

#### Condition report

Orientation	Material	Size	Shape	Local environment
Laying Flat	Sandstone	201x78 cm	Tapering slightly	Inside railed enclosure weeds, moss and roses over grave slabs to N
Facing				IMGP 3900, 3809-3813, 3825
East				
Engraving?	Fine example of Loch Awe School style carving: Emblazon at top panel (with floriated border) worn or removed only relief carving of swan remains. Centre panel angel face with wings and playing trumpet overlapping into oval at bottom panel. Bottom panel includes female figure with mirror, heart, star in oval.			
Damage				

<b>Remarks</b>	Excellent condition, carved in relief
----------------	---------------------------------------

Inscription:

#65







#66

Condition report

<b>Orientation</b> Laying flat	<b>Material</b> Granite	<b>Size</b>  small  140x65cm	<b>Shape</b>  Parallel sided	<b>Local environment</b>  Grass to edges surrounded by grave slabs	
<b>Facing</b> East				PHOTO ID IMGP 3829	
<b>Engraving?</b>	Armorial shield with banner all else erased. Probably slab fragment.				
<b>Damage</b>					
<b>Remarks</b>	Not a complete slab				

Inscription/engraving: None

#66



#67

#### Condition report

Orientation	Material	Size	Shape	Local environment	
Laying flat	Sandstone	35x55 cms	Tapering slightly	In railed enclosure surrounded by slabs	
<b>Facing</b> East	Inscription faces			POTO ID	IMGP 3830
<b>Engraving?</b>	Small slab with angel in simple border				

<b>Damage</b>					
<b>Remarks</b>	Small stone				

Inscription/engraving: None

#67





#68

Condition report

Orientation	Material	Size	Shape	Local environment	
Laying flat	Sandstone	200x78 cm	Tapering slightly	In railed enclosure surrounded by slabs	
Facing East				PHOTO ID	
Engraving?	Fine example of Loch Awe sandstone carving: Immortality symbol at top, to viewers left knotwork (in cross of St Oran Iona) in 3 circles down one side with possible armorial and banner in centre				
Damage					
Remarks					

Inscription/engraving:

#68



#69

#### Condition report

Orientation	Material	Size	Shape	Local environment
Laying flat,	Sandstone	170x65cm	Parallel sided slab	Grass to edges and covering graveslab on S railed enclosure to N
Facing East				PHOTO ID IMGP 3897
Engraving?				
Damage			Lichen: Few small crustose spots	
Remarks	worn inscription			

--	--

Inscription/engraving:

MARGRET  
 LOVEg TO  
 ALEXANDER McDOUGAL  
 WHO  
 DEPARTED THIS LIFE  
  
 AGE 80

#69



#70

Condition report

Orientation	Material	Size	Shape	Local environment
Flat Laying	Slate slab	190x72 cm	Parallel sided	in metal railed enclosure
Facing East				PHOTO ID IMGP 3903
Engraving?				

<b>Damage</b>					
<b>Remarks</b>					

Inscription/engraving:

In Memory of  
 Archbld Sinclair son  
 Of John Sinclair Tacksman  
 Of Dunmore who  
 Died on the 29<sup>th</sup> Dec  
 Xxxx aged 7 years  
 Also in memory of  
 John Sinclair Tacksman of Dunmore  
 Who died on the 5<sup>th</sup> January 1840  
 Aged 70 years  
 In memory of John Sinclair  
 Son of John Sinclair Tacksman  
 Who died at TIGHN BRUAGHN  
 On the XXXX July 1902 in his  
 81<sup>st</sup> year  
 And his sister  
 Katherine Sinclair  
 Wife of Robert McLean  
 Xxxx of steamer Shand  
 Oban on 7<sup>th</sup> December

#70



#71

Condition report

Orientation	Material	Size	Shape	Local environment
Flat Laying	Slate slab	190x72cm	Parallel sided	In railed enclosure
Facing East				PHOTO ID IMG1813
Engraving?				
Damage			Lichen: few small patches white crustose	
Remarks				

Inscription/engraving:

To the memory of  
Mary Sinclair daugh  
ter of John Sinclair  
Tacksman  
Who died on the xxxx 1813  
Aged 1 month  
Also Mary Sinclair  
Her sister  
Who died 2<sup>nd</sup> March 184x  
And



#71



#72

Condition report

Orientation	Material	Size	Shape	Local environment	
Flat	Sandstone	205x78 cm	Rectangular slab	Flat tombs on three sides upright to W	
Facing East				PHOTO ID IMG 1815	
Engraving?					
Damage					
Remarks	Very Difficult/impossible to read, weathered deeper vertical strokes ok remainder not				

Inscription:

#72





#73

Condition report

Orientation	Material	Size	Shape	Local environment	
Flat Laying	Slate	178x48cm	Slab pointed at the top tapering to the bottom	Grass to edges	
Facing East				PHOTO ID	IMG 1860
Engraving?	Probably Loch Awe School carved slate slab. Sword with cantered quillons/reverse guard flanked on either side by rough vines. Class II Loch Awe School (sword flanked by scrolls) engraving. Double stalked leaves of plant scrolls, flanking a central sword with reverse angle short guard towards the top two thirds of the slab.				
Damage	Slate flaking off surface. Damage to sword carving two thirds from top.				
Remarks	Roots of surrounding grass penetrating slate layers and flaking off the slate relief.				

Inscription/engraving:

#73





#74

Condition report

Orientation	Material	Size	Shape	Local environment
Flat Laying	Slate	170x55 (top) 45 (bottom) cm	Slab tapered from the top	Grass to edges and covering
Facing East				PHOTO ID IMGP 4009
Engraving?	Heavy cable work and rough engraving suggests Loch Awe School sculpturing/engraving. Slate slab engraving at top worn away middle to lower section has central panel with worn knot-work scrolls and bottom panel with three plant scrolls with 5 lobed leaf in each of 3 circles. To viewers left side is a heavy cabling for the bottom half to the left of the circles and a heavy plain moulding or staff to left of the cabling.			
Damage	Relief carving worn at top and root damage flaking off slate relief. Bottom left corner broken off. Several rust holes probably from iron pyrites rusting.			
Remarks	Tapering slightly from top to bottom with iron pyrites embedded and rusted into holes.			

Inscription:

#74



#### Condition report

#75

Orientation	Material	Size	Shape	Local environment
Flat	Sandstone	190x70 cm	Rectangle	Grass to edges and covering
Facing East				PHOTO ID IMGP 4025
Engraving?				
Damage				
Remarks	RM49; Alexander McCulloch died 4/8/1833. Stone laid by his parents John McCulloch and Mary McDougall, tenant Colgin. Few patches white amorphous fungus			

Inscription/engraving:

Alex<sup>r</sup> McCulloch

Who departed this  
life on the died 7<sup>th</sup> August 1833.

This stone was  
laid here

By  
his parents John  
McCulloch and Mary  
McDougall, tenant Colgin

#75





#76

Condition report

Orientation	Material	Size	Shape	Local environment	
Flat	Orange sandstone	110x55 cm	Tapering from E to W, (wider at E)	Grass to edge and covering. In alignment with other laying grave slabs	
Facing East?				PHOTO ID IMGP 4027	
Engraving?	Sandstone slab laying flat arguably with rune markings on top surface and a common vertical surface. Only just visible from the top.				
Damage					
Remarks	Raising this (or possibly excavation down) would show if it is an ogham stone. Aligned with a row of grave slabs, therefore could be a reuse. Surrounding stones are laying slabs; one 15 <sup>th</sup> century slate, one 1833 dressed sandstone for McCulloch, and one undated small slate engraved “AMcC”. Not mentioned in any other publication related to this site.				

Inscription/engraving: None



#76



#77

Condition report

<b>Orientation</b> Laying flat	<b>Material</b> slate	<b>Size</b> Small slab	<b>Shape</b>	<b>Local environment</b> covered in Grass to edges and covering	
<b>Facing</b> East				NO PHOTO!!!	
<b>Engraving?</b>					
<b>Damage</b>					
<b>Remarks</b>					

Inscription/engraving:

AM<sup>c</sup>C

#78

Condition report

<b>Orientation</b>  Laying	<b>Material</b> Slate Slab	<b>Size</b>  30x20 cm	<b>Shape</b>  Small slab	<b>Local environment</b>  Covered with grass	
<b>Facing</b> East				PHOTO ID IMGP 4128	
<b>Engraving?</b>					
<b>Damage</b>					
<b>Remarks</b>	Not completely uncovered, exact size not measured				

Inscription/engraving:

PM.C. 1785

#78



#79

Condition report

Orientation	Material	Size	Shape	Local environment	
Flat Laying	Slate	~45x30 cm	Rectangle	Grass covered	
Facing East				PHOTO ID IMGP 4130	
Engraving?					
Damage					
Remarks	Only small part of the slab exposed, all edges/corners difficult to find				

Inscription/engraving:

DunCAN. M.C.DOUGALL

WHO DEPARTED

-HE DE<sup>s</sup> 1801

AGE 11 YEARS

#79



#80

Condition report

Orientation	Material	Size	Shape	Local environment	
Horizontal Slab,	Grey Schist	180x65cm	Parallel sided	Grass to edges and covering	
Facing East				PHOTO ID IMGP 4134	
Engraving?					
Damage					
Remarks	inscription worn smoothed difficult/impossible to read				

Inscription/engraving:

#80







#81

Condition report

<b>Orientation</b> Laying	<b>Material</b> Slate slab	<b>Size</b> 150x55 cm	<b>Shape</b> Parallel sided slab	<b>Local environment</b> Grass to edges and covered	
<b>Facing</b> East				PHOTO ID IMGP 4135	
<b>Engraving?</b>					
<b>Damage</b>					
<b>Remarks</b>					

Inscription/engraving: RM49

X<sup>D</sup> M<sup>C</sup>CULLOCH  
who departed this life  
on the 7<sup>th</sup> August  
1865 This Stone was  
Laid here  
By  
His parents John  
McCulloch and Mary  
McDougall Tenant



#81

#82

Condition report

<b>Orientation</b> Laying flat	<b>Material</b> Grey Sandstone	<b>Size</b>  160x 65cm	<b>Shape</b>  Parallel sided slab	<b>Local environment</b> Grass to edges and Covering
<b>Facing</b>				PHOTO ID IMGP 4142
<b>Engraving?</b>				
<b>Damage</b>			Lichen: Two patches white crustose	
<b>Remarks</b>				

Inscription/engraving:

HERE LIES THE REMAINS OF  
ANGUS McINNES  
Who died at Oban 1800  
In the 60<sup>th</sup> year of his age  
Ths stone is placed here by his daughter MARY

ALSO  
THE REMAINS OF  
MARY CAMERON THIRD  
DAUGHTER OF THE LATE  
DONALD CAMERON KNOCK  
MORVEN AND BELOVED WIFE OF  
ANGUS M<sup>c</sup> CULLXXX

GRANDSON OF THE ABOVE ANGUS M<sup>c</sup>INNES

#82



#83

Condition report

Orientation	Material	Size	Shape	Local environment
Horizontal	Slate	180x50,tapering to 45 cm	Tapered slab	Grass to edges and covering
Facing	Inscription faces			PHOTO ID IMGP 4150
East				
Engraving?	Slab bearing an unsheathed single-handed sword with short quillions on the right, on one side of the sword is a single plant scroll.			
Damage	The stone is broken across at the bottom			
Remarks	The plant scroll is surmounted by a single rose. Inscriptions above that are difficult to decipher. Foot of graveslab broken across			

Inscription/engraving:

#83



#84

#### Condition report

Orientation	Material	Size	Shape	Local environment
Horizontal	Slate	45x32m	Small fragment	Covered in grass
Facing East				PHOTO ID IMGP 4260
Engraving?	Fragment containing foliated 7 lobed leaves in vine network			
Damage				
Remarks	Yet to be determined if this has broken off from an adjacent slab, but looks unlikely.			

Inscription/engraving: None



#84



Condition report

**Lower churchyard: all lower graveslabs begin with a '2'**

#201

<b>Orientation</b> Flat laying	<b>Material</b> Slate	<b>Size</b> 95 x 50 cms	<b>Shape</b>	<b>Local environment</b>	
<b>Facing</b>					
<b>Engraving?</b>	None				
<b>Damage</b>					
<b>Remarks</b>					

Inscription/engraving: NONE

Condition report

#202

<b>Orientation</b> Flat laying	<b>Material</b> Slate	<b>Size</b> 200 x 85 cms	<b>Shape</b> Small slab	<b>Local environment</b> Grass to edges	
<b>Facing</b> Read facing west				PHOTO ID	P10401177
<b>Engraving?</b>					
<b>Damage</b>					
<b>Remarks</b>					

Inscription/engraving:

ERECTED  
by Sarah Livingston in Memory of  
her Father Neil Livingston who died  
at Soroba the 1<sup>th</sup> day of Dec<sup>r</sup>  
1819 aged 69 years

#202



# Condition report

#203

Orientation	Material	Size	Shape	Local environment	
Flat laying	Slate	230 x 65 cm	Parallel sided slab	Grass to base surrounded by slabs	
Facing East					
Engraving?					
Damage			Lichen:		
Remarks					

Inscription/engraving:

ERECTED  
by  
MALCOM LIVINGST

TAXMAN ARDORAN  
IN MEMORY OF HIS SON HUGH  
WHO DIED 2<sup>D</sup> JULY  
AGED 22  
ALSO HIS WIFE  
MAXWELL McDOUGALL  
WHO DIED 10<sup>TH</sup> MAY 1861  
AGED 49 YEARS

#203



Condition report

#204

<b>Orientation</b> Flat	<b>Material</b> Slate	<b>Size</b> 180 x 55 cms	<b>Shape</b>	<b>Local environment</b>	
<b>Facing</b>				No PHOTO	
<b>Engraving?</b>					
<b>Damage</b>					
<b>Remarks</b>					

Inscription/engraving: NONE

#204



Condition report

#205

Orientation	Material	Size	Shape	Local environment	
Flat	Sandstone	200 x 65 cms	Parallel slab	Grass to edges	
Facing East				PHOTO ID P1040119	
Engraving?					
Damage					
Remarks					

Inscription/engraving:

1837

ERECTED

BY

Dugd livingston and

Mary MCCulloch Dunstaff

nage in Memory of 6

of their children

#205



# Condition report

206

Orientation	Material	Size	Shape	Local environment
HeadStone Upright	Sandstone	130 x 50 x 15 cms	Rectangular with angled ornamental top possibly with engraving	Grass to plinth base on small steep slope
Facing East				Photo ID P1030988
Engraving?	Possible engraving on ornamental top difficult to see because of moss covering			
Damage			Lichen: Several large white crustose lichen patches, orange and yellow sparse leprose colonies.	
Remarks				

## Inscription/engraving:

ERECTED BY  
ISABELLA LIVINGSTONE OR  
SMITH IN MEMORY OF HER  
MOTHER CATHERINE LIVINGSTON  
OR MACINTYRE WHO DIED AT  
SOROBA COTTAGE NEAR OBAN  
25<sup>TH</sup> MARCH 1883 AGED 101 YEARS  
ALSO HER FATHER  
ARCHIBALD LIVINGSTON  
OF PORT KERRERA WHO DIED AT  
SOROBA NEAR OBAN 27<sup>TH</sup>  
JANUARY 1884 AGED 98 YEARS

#206



Condition report

#207

<b>Orientation</b> Headstone Upright	<b>Material</b> Sandstone	<b>Size</b> 180 x 60 x 15 cms	<b>Shape</b> Rectangular with Engraved top	<b>Local environment</b> West end of a railed enclosure within which are four flat slate stones
<b>Facing</b> East				PHOTO ID P1030987
<b>Engraving?</b>	Upper part contains wreath engraving with rose in centre			
<b>Damage</b>			Lichen: Some large and small white crustose lichen colonies on edges	
<b>Remarks</b>	Some moss on the top edges			

Inscription/engraving:

SACRED  
TO THE MEMORY  
of  
ARCHIBALD MACDOUGALL  
TENANT, SLATERNACH, KERRERA,  
WHO DIED 11<sup>TH</sup> JUNE 1856,  
AGED 57 YEARS.  
ALSO  
CHRISTINA MACDOUGALL  
HIS WIFE DIED 28. SEPT 1880  
AGED 80 YEARS  
ALSO THEIR DAUGHTER  
CATHERINE  
DIED 24<sup>TH</sup> DEC<sup>R</sup> 1875,  
AGED 33 YEARS.

JOHN MACDOUGALL. DIED 13<sup>TH</sup>  
OCT<sup>R</sup> 1887 AGED 66 YEARS  
ALLAN MACDOUGALL DIED 29<sup>TH</sup>  
MARCH 1889 AGED 50 YEARS.  
COLL MACDOUGALL. DIED 5<sup>TH</sup> NOV  
1897 AGED 73 YEARS  
MARY MACDOUGALL. DIED 3<sup>RD</sup> APRIL  
1898 AGED 65 YEARS,  
PETER MACDOUGALL, NEPHEW  
DIED 1<sup>ST</sup> JAN 1899 AGED 34 YEARS  
DUNCAN MACDOUGALL WHO DIED 20<sup>TH</sup> FEBRUARY  
1904 AGED  
78 YEARS.

John McCORQUODALE OBAN



#207

Condition report

#208

Orientation	Material	Size	Shape	Local environment	
Flat	Slate:	165 x 70 cms	Slab tapered towards west		
Facing East				PHOTO ID	P1040107
Engraving?					
Damage	Large areas of flaking:				



Remarks	
---------	--

Inscription/engraving:

I. McD

1773

#208



Condition report

#209

Orientation	Material	Size	Shape	Local environment	
Laying Flat	Slate	180 x 60 cms	Tapered slab	Grass to edges	
Facing East				PHOTO ID P1040111	
Engraving?					
Damage					
Remarks					

Inscription/engraving:

A.M<sup>c</sup>D

#209



# Condition report

#210

Orientation	Material	Size	Shape	Local environment	
Flat	Slate: flaking	165 x 60 cms		Grass to edges	
Facing East				PHOTO ID P1040112	
Engraving?					
Damage					
Remarks	The third line of the inscription is indecipherable due to flaking of the slate				

# Inscription

M<sup>c</sup>D

71

#210



Condition report

#211

Orientation	Material	Size	Shape	Local environment	
Flat	Slate	175 x 60 cms			
Facing East				PHOTO ID 1040113	
Engraving?					
Damage					
Remarks					

Inscription/engraving:

P - D

1773

To the north of enclosure

#211



Condition report

#212

<b>Orientation</b> Flat	<b>Material</b> Slate: poor quality	<b>Size</b> 180 x 55 cms	<b>Shape</b>	<b>Local environment</b>	
<b>Facing</b>					
<b>Engraving?</b>					
<b>Damage</b>					
<b>Remarks</b>					

Inscription/engraving: NONE

Condition report

#213

<b>Orientation</b>	<b>Material</b>	<b>Size</b>	<b>Shape</b>	<b>Local environment</b>	
Flat Laying	Slate	160x55cms			
<b>Facing East</b>					
<b>Engraving?</b>	None				
<b>Damage</b>					
<b>Remarks</b>	Poor quality slate				

Inscription/engraving: None

#213 No Photo



# Condition report

#214

Orientation	Material	Size	Shape	Local environment
Headstone Upright	Sandstone	140 x 45 x 45 cms for main panel	Obelisk. The obelisk extends upwards for another 170 cms.	Grass to base
Facing East				PHOTO ID P1030983
Engraving?	Mason's mark on front of pediment. On the other three sides there are small, uninscribed shields in similar positions			
Damage			Lichen: Small patches crustose white lichen and black fungus	
Remarks	Moss on edges			

## Inscription/engraving:

ERECTED BY  
DUNCAN M<sup>C</sup>COLL  
IN MEMORY OF HIS FATHER  
JOHN M<sup>C</sup>COLL  
WHO DIED AT OBAN 8<sup>TH</sup> AUG  
1875 AGED 68 YEARS.  
ALSO HIS SISTER  
CATHRINE DIED AT OBAN  
24<sup>TH</sup> SEPTEMBER 1857  
AGED 19 YEARS.  
HIS BROTHER DUGALD  
DIED AT OBAN 4<sup>TH</sup> MAY 1876  
AGED 28 YEARS.  
ALSO HIS MOTHER  
CHRISTINA M<sup>C</sup>PHAIL

DIED 12<sup>TH</sup> OCT. 1896 AGED 75 YEARS

ALSO THE ABOVE

DUNCAN M<sup>C</sup>COLL

DIED 26<sup>TH</sup> NOV.1902 AGED 48 YEARS

#214





## Condition report

<b>Orientation</b>	<b>Material</b>	<b>Size</b>	<b>Shape</b>	<b>Local environment</b>	
Horizontal	Slate	1.90x0.55m	Not tapered	Grass to edges	
<b>Facing East</b>					
<b>Engraving?</b>					
<b>No damage</b>					
<b>Remarks</b>	RM: 24. Archibald Keith died 16/2/1812 aged 28 years. Stone by spouse Jean Cowan, Oban				

## Inscription:

In Memory Of  
 Arehibald Kieth Who  
 Died the 16<sup>th</sup> Feby 1812  
 Aged 28 years. This  
 Stone is Erected By His  
 SPOUse jean cowan



#215

#### Condition report

#216

Orientation	Material	Size	Shape	Local environment	
Erect Stone	Sandstone	150 x 60 x 15 cms	Rectangle with triangular top ornament and base plinths.	Grass to base plinth, wall 3m behind	
Facing East				PHOTO ID	P1030918
Engraving?					
Damage			Lichen: Few patches foliose and crustose		
Remarks	Triangular top ornament contains '1893'  RM23b.: 1893 By Sophia McMillan her father Angus McKinnon late farmer Barnabuck, Kerrera died Oban 5/3/1889 aged 94 years. Her mother Lucy McDougall died Barnabuck 9/11/1871 aged 72 years. Also her daughter Martha McMillan died Ulva Villa, Oban 26/5/1888 aged 27 years. The above Sophia died Ulva, Oban 10/3/1908 aged 81 years				

Inscription/engraving:

ERECTED BY  
SOPHIA E. M<sup>C</sup>MILLAN  
IN MEMORY OF HER FATHER  
ANGUS MCKINNON,  
LATE FARMER. BARNABUCK, KERRERA  
WHO DIED AT OBAN 5<sup>TH</sup> MARCH 1889  
AGED 94 YEARS  
HER MOTHER LUCY M<sup>C</sup>DOUGALL  
WHO DIED AT BARNABUCK 9<sup>TH</sup> NOV<sup>R</sup>  
1871 AGED 72 YEARS  
ALSO THEIR BELOVED DAUGHTER MARTHA  
M<sup>C</sup>MILLAN WHO DIED AT ULVA VILLA  
OBAN 26<sup>TH</sup> MAY 1887 AGED 27 YEARS  
THE ABOVE SOPHIA E. M<sup>C</sup>MILLAN  
WHO DIED AT ULVA VILLA OBAN  
10<sup>TH</sup> MARCH 1908 AGED 81 YEARS

#216





Condition report

#217

210



<b>Orientation</b>  Headstone Fallen	<b>Material</b>  Slate	<b>Size</b>  105 x 70 x 15 cms	<b>Shape</b>  Small slab	<b>Local environment</b>  Grass to edges	
<b>Facing</b> East				PHOTO ID P1040093	
<b>Engraving?</b>					
<b>Damage</b>	Cracked across botton quarter				
<b>Remarks</b>	Weathered/worn inscription and surface.  RM23: By Angus McKinnon, Kerra his father Lachlin McKinnon died 20/3/1816 aged 65 years				

Inscription/engraving:

ERECTED  
  
BY  
  
ANGUS M<sup>C</sup>KINNON  
  
KERRA IN MEMORY  
  
OF HIS FATHER  
  
LACHLIN M<sup>C</sup>KINNON  
  
WHO DIED ON THE  
  
17 MARCH 1816  
  
AGED 65 YEARS



#217

Condition report

#218

Orientation	Material	Size	Shape	Local environment	
Headstone	Sandstone weathered	35 x 60 x 12 cms	Small stone with slightly curved top	Grass to base	
Erect					
Facing East				PHOTO ID P1030999	
Engraving?					
Damage					
Remarks	Possibly only the lower half remaining. Eroded and difficult to read  RM14: By Dugald MacGrigor 20 March 1802 (stone sunken)				

Inscription/engraving:

ERECTED BY  
DUGALD MAC  
GRIGOR 24<sup>TH</sup> MARCH

1802

#218



# Condition report

#219

Orientation	Material	Size	Shape	Local environment	
Flat Laying	Slate	155x60cms			
Facing East				PHOTO ID P1040088	
Engraving?					
Damage					
Remarks	Cracked, right to centre				

Inscription/engraving:

PM<sup>8</sup>

#219



Condition report

#220

Orientation	Material	Size	Shape	Local environment
Flat Laying	Slate	195x50 cms	Parallel sided slab	Grass to edges; touching grave slab to S
Facing East				PHOTO ID P1040086
Engraving?				
Damage			Lichen: small patches white crustose and leprose	
Remarks	RM 27: Here lyes the body of Robert Golld, mason from M(uthi)e died at Oban 20/8/1787 aged 52 years			

Inscription/engraving:

Here lyes  
The Bodyof  
Robert GOULD (GOLLD)  
Mason  
From Muthil  
Who  
Died Acbain  
20 of April  
1787 Age  
52 years

#220





# Condition report

#221

Orientation	Material	Size	Shape	Local environment	
Headstone standing	Sandstone	145 x 60 x 15 cm	Rectangular with semicircular top	Grass to base wall at rear of the stone	
Facing East				PHOTO ID	P1030979
Engraving?					
Damage			Lichen: Large white leprose and crustose colonies on front edges		
Remarks	Adjacent to wall at back. Some chipping of stone at top.  RM26a; Dugald White died Kilmore 20/11/1866 aged 66 years and his wife Ann McDougall died 20/2/1879 aged 68 years. By his daughter Lily, wife of Robert Walls				

## Inscription/engraving:

IN MEMORY  
 OF  
 DUGALD WHITE,  
 WHO DIED AT KILMORE,  
 NOV<sup>R</sup> 20<sup>TH</sup> 1866 AGED 66 YEARS.  
 ALSO HIS BELOVED WIFE,  
 ANN M<sup>C</sup>DOUGALL  
 WHO DIED FEB<sup>Y</sup> 20<sup>TH</sup> 1879  
 AGED 68 YEARS  
 ERECTED  
 BY THEIR DAUGHTER LILY  
 WIFE OF ROBERT WALLS

#221



Condition report

#222

Orientation	Material	Size	Shape	Local environment	
Flat: fallen on face	Sandstone	145 x 80 cms		Next to and partly obscuring #223 slab to Petter White	
<b>Facing</b> Downwards: originally facing east					
<b>Engraving?</b>	None Visible				
<b>Damage</b>					
<b>Remarks</b>	Fallen				

Inscription/engraving: None Visible

# Condition report

#223

Orientation	Material	Size	Shape	Local environment	
Flat laying	Slate	200 x 65 cms		On grass slope adjacent to wall and #222  16m SW of entrance	
Facing East				PHOTO ID P1040085	
Engraving?					
Damage					
Remarks	Partially overlain by fallen stone making it impossible to read the whole inscription				

Inscription/engraving:

PeTTeR WHITe

( )yer INSTroN

( )TOLLer

#223



Condition report

#224

<b>Orientation</b> Flat Laying	<b>Material</b> Slate	<b>Size</b> 115 x 80 cms	<b>Shape</b>	<b>Local environment</b>	
<b>Facing</b>					
<b>Engraving?</b>	None				
<b>Damage</b>					
<b>Remarks</b>	Stone rough with some flaking				

Inscription/engraving: None

Condition report

#225

Orientation	Material	Size	Shape	Local environment
Headstone Upright	Granite	100 x 55 x 10 cms for main panel  30 x 65 x 25 cms for upper plinth  30 x 80 x 35 cms	Double Plinth. Rough back	Grass to base. Slope down to Southwest and tree behind
Facing East				PHOTO ID P1030990
Engraving?				
Damage			Lichen: Small patches of white crustose on plinth	
Remarks	Some moss on plinth and edges of main stone			

Inscription/engraving:

In  
Loving Memory  
-- of --  
DUNCAN DOWNIE  
HYDEPARK LOCOMOTIVE WORKS  
GLASGOW  
WHO DIED 4<sup>TH</sup> APRIL 1913,  
AGED 68 YEARS  
*ALSO HIS WIFE*  
MARGARET LAMONT  
WHO DIED 28<sup>TH</sup> DEC. 1919,



AGED 79 YEARS

#225



Condition report

#226.

Orientation	Material	Size	Shape	Local environment	
Erect	Slate with much pyrites	160 x 65 x 10 cms	Arch and shoulders shape at top	On S slope another headstone to N grass to base	
Facing East				PHOTO ID P1030989	
Engraving?					
Damage	Some weathering to E face		Lichen: white leprose, crustose and foliose, possibly including <i>Parmelia sulcata</i>		
Remarks	Some moss and black fungus				

Inscription:

Erected by  
 JOHN MACDOUGALL  
 In Memory of his Mother  
 JANET MACDOUGALL  
 who died at  
 Oban. 3<sup>rd</sup> Feb<sup>y</sup> 1911  
 Aged 92 years  
 Daughter of the late  
 ALLAN and ANN  
 late of Achnalirig Glencruitten

#226



#227.

Condition report

Orientation	Material	Size	Shape	Local environment	
Erect	Red Sandstone	180 x85 x 30 cm		Slope up behind (W) Grass to base	
Facing Front					
Engraving?					
Damage			Lichen: Patches white crustose and leprose, some foliose on upper edges.		
Remarks	Several of the letters A are written without the crossbar. Moss mainly on base				

Inscription:

ERECTED BY  
COLL M<sup>C</sup>DOUGALL,  
MERCHANT OBAN,  
IN MEMORY OF HIS FATHER  
ALLAN M<sup>C</sup>DOUGALL  
WHO DIED AT GLENCRUITTUN  
ON THE 1<sup>ST</sup> SEPT 1838  
AGED 75 YEARS  
ALSO  
OF HIS DAUGHTER,  
CATHERINE,  
WHO DIED AT OBAN,  
ON THE 9<sup>TH</sup> MAY 1838,  
AGED 7 YEARS  
AGNES M<sup>C</sup>DOUGALL,  
WIFE OF THE ABOVE

ALLAN M<sup>C</sup>DOUGALL,  
 WHO DIED 29<sup>TH</sup> JULY 1886,  
 AGED 93 YEARS

#227



Condition report

#228

<b>Orientation</b> Flat Laying	<b>Material</b> Sandstone	<b>Size</b> 170x70cms	<b>Shape</b>	<b>Local environment</b>	
<b>Facing</b> East					
<b>Engraving?</b>	None				
<b>Damage</b>					
<b>Remarks</b>					

Inscription/engraving: None

Condition report

#229

Orientation	Material	Size	Shape	Local environment	
Flat	Slate	175x70	Parallel sided slab	Grass and soil to base	
Facing East				PHOTO ID  P1040142	
Engraving?					
Damage					
Remarks					

Inscription/engraving:

AMD

#229





# Condition report

#230

Orientation	Material	Size	Shape	Local environment	
Flat	Slate	190 x 85 cms			
Facing East				PHOTO ID P1040121	
Engraving?					
Damage					
Remarks					

Inscription/engraving:

D M<sup>c</sup>K

#230





Condition report

#231

<b>Orientation</b>	<b>Material</b>	<b>Size</b>	<b>Shape</b>	<b>Local environment</b>	
Flat Laying	Slate	190 x 65 cms	Parallel sided slab	Grass to base	
<b>Facing</b> East				PHOTO ID P1040120	
<b>Engraving?</b>					
<b>Damage</b>					
<b>Remarks</b>					

Inscription/engraving:

DUNCAN M<sup>C</sup>DUGALL

CLEIGH

#231



# Condition report

#232

<b>Orientation</b>  Headstone standing	<b>Material</b> Sandstone	<b>Size</b> 90 x 70 x 15 cm	<b>Shape</b> Rectangular with ornamental top	<b>Local environment</b>  Grass to base	
<b>Facing</b> East				PHOTO ID P1030991	
<b>Engraving?</b>	.				
<b>Damage</b>				Lichen: Few patches white leprose and crustose	
<b>Remarks</b>	Encrusted with moss making decipherment very difficult.  RM19: Elizabeth McNeil spouse to Alexander (May) Oban died 11/9/1828 aged 60 years. By her sons Archibald Neil, Hector and John May				

## Inscription/engraving:

IN MEMORY OF  
 ELISABETH MCNEIL  
 spouse to ALEX<sup>R</sup> MAY [?]  
 who departed this Life  
 Sept 16h [?] 1828 [?]  
 Aged 60  
 d by LOV  
 n LRC

TOR and 11 N

#232





Condition report

#233

<b>Orientation</b> Flat Laying	<b>Material</b> Slate	<b>Size</b> 185 x 65 cm	<b>Shape</b> Parallel sided rounded at top another graveslab to N	<b>Local environment</b> Grass to edge and covering edges	
<b>Facing</b> East				PHOTO ID P1040106	
Engraving?					
Damage					
Remarks	Tennant (sic). Grooved all round edge of stone				

Inscription/engraving:

DUNCAN M<sup>C</sup>DOUGALL

TENNANT KILMORE

#233



Condition report

#234

<b>Orientation</b> Flat	<b>Material</b> Slate	<b>Size</b> 180 x 60 cm	<b>Shape</b>	<b>Local environment</b>	
<b>Facing</b>					
<b>Engraving?</b>	None				
<b>Damage</b>					
<b>Remarks</b>					

Inscription/engraving: NONE

Condition report

#235

Orientation	Material	Size	Shape	Local environment	
Flat Laying	Slate	200 x 60 cm	Tapered to bottom	Grass to and over edges another slab to N	
Facing East				PHOTO ID P1040105	
Engraving?					
Damage					
Remarks	Petter (sic). Identical inscription to following stone. Scribing lines visible				

Inscription/engraving:

JOHN MC DUGALD  
 & PETTER MC DUGALD  
 1803

#235



Condition report

#236 DUPLICATION of #235

Orientation  Flat	Material Slate	Size  200 x 65 cms	Shape	Local environment	
Facing East				PHOTO ID P1040104	
Engraving?					
Damage					
Remarks	Petter (sic). Identical inscription to stone 35. Scribing lines visible.				

Inscription/engraving:

JOHN MC DUGALD  
 & PETTER MC DUGALD  
 1803

#236



#### Condition report

#237

Orientation	Material	Size	Shape	Local environment
Erect Stone	Sandstone	245 x 80 x 20 cm	Rectangular with triangular top and obelisk like extension (cross or shrine)	On slight SW slope down. Grass to base surrounded by laying slabs under the grass
Facing East				PHOTO ID P1030992
Engraving?				
Damage			Lichen: white (crustose & leprose) and yellow lichen colonies on edges	
Remarks	The N of IN MEMORY is reversed Moss on top edges  RM18: 1875 By John McCulloch – his sister Mary died 21/4/1831 Sarah Cowan his mother died 1/10/1844 Duncan his father died March 1845 aged 84 years. Archibald his brother died 22/2/1856 also Duncan died in Australia 16/3/74 and Duncan his son died Gaoylin, Kerrera 15/4/1856 aged 19 years. John died Benderloch 30/4/1875 aged 36 years also a boy in infancy Sarah his daughter died Glasgow 7/1/1872 aged 29 years. The			



	above John McCulloch died Oban 30/7/1884 aged 81 years. His wife Catherine Campbell died Oban 28/3/1897 aged 83 years and their youngest son Archibald died Oban 10/8/1918 aged 67 years
--	--

Inscription/engraving:

1875

ERECTED

BY JOHN M<sup>C</sup>CULLOCH

IN MEMORY OF HIS SISTER

MARY DIED 21<sup>ST</sup> APRIL 1831

SARAH COWAN HIS MOTHER

DIED 1<sup>ST</sup> OCT. 1844

DUNCAN HIS FATHER DIED

2<sup>ND</sup> MARCH 1845 AGED 84 YEARS,

ARCHIBALD

BROTHER DIED MARCH 2<sup>ND</sup>

1856, ALSO DUNCAN, DIED

IN AUSTRALIE 10<sup>TH</sup> MARCH

1874

DUNCAN, HIS SON

DIED AT GAOYLIN, KERRERA

16<sup>TH</sup> APRIL 1856 AGED, 19 YEARS

JOHN, DIED AT BENDERLOCH

30<sup>TH</sup> APRIL 1875 AGED 36 YEARS

ALSO A BOY IN INFANCY

SARAH, HIS DAUGHTER, DIED AT

GLASGOW. 7<sup>TH</sup> JAN<sup>Y</sup> 1872 AGED 29 YEARS

THE ABOVE JOHN M<sup>C</sup>CULLOCH DIED AT

OBAN. 30<sup>TH</sup> JULY 1884 AGED 81 YEARS

HIS WIFE CATHERINE CAMPBELL DIED AT

OBAN 28<sup>TH</sup> MARCH 1897 AGED 83 YEARS

AND THEIR YOUNGEST SON ARCHIBALD, DIED AT

OBAN, 10<sup>TH</sup> AUG. 1916 AGED 67 YEARS

#237



Condition report

#238

Orientation	Material	Size	Shape	Local environment	
Flat	Sandstone	185 x 70 cm	Rectangular	Grass to edges	
Facing East					
Engraving?	:				

<b>Damage</b>					
<b>Remarks</b>					

Inscription/engraving:

SACRED

To the Memory of

*Allan M'Dougall*

who died 11th Sept<sup>r</sup> 1839

Aged 52 Years

this is done by his son ALLAN

Also

DUNCAN his son

who died at Glasgow.

on the 9<sup>th</sup> of Oct<sup>r</sup> 1813.

aged 21 years

#238



Condition report

#239

<b>Orientation</b> Flat Laying	<b>Material</b> Slate	<b>Size</b> 195 x 65 cms	<b>Shape</b>	<b>Local environment</b>	
<b>Facing</b>					
<b>Engraving?</b>					
<b>Damage</b>					
<b>Remarks</b>					

Inscription/engraving: No inscription

Condition report

#240

<b>Orientation</b>  Flat-fallen back	<b>Material</b> Sandstone	<b>Size</b>  140x70 cms  Plinth 35x95x15	<b>Shape</b>  Rectangle-Triangle top	<b>Local environment</b>	
<b>Facing</b> East inscription facing up				PHOTO ID 1040102	
<b>Engraving?</b>					
<b>Damage</b>	Fallen on back		Lichen: Some white leprose patches		
<b>Remarks</b>	Covered in Moss				

Inscription/engraving:

1884

SACRED TO THE MEMORY OF

DUNCAN LAMONT

DIED 11<sup>TH</sup> MAY 1884 AGED 78 YEARS

AND HIS WIFE MARGARET M<sup>C</sup>CULLOCH

DIED 12<sup>TH</sup> DEC 1879

AGED 72 YEARS

AND OF THEIR CHILDREN

HUGH DIED AT LEITH OCT 12 1867 AGED

35 YEARS MARY DIED AT GLASGOW

19<sup>TH</sup> JUNE 1871 AGED 37 YEARS

ANNIE DIED 22<sup>ND</sup> APRIL 1874 AGED 26 YEARS

ISABELLA DIED IN AMERICA 22<sup>ND</sup> SEPT<sup>R</sup>

1878 AGED 41 YEARS

JOHN DIED 4<sup>TH</sup> MAY 1884 AGED 40

ALSO A BOY WHO DIED IN INFANCY

DUNCAN DIED AT KENTALLEN

9<sup>TH</sup> AUGUST 1916 AGED 73 YEARS

#240





Condition report

#241

Orientation	Material	Size	Shape	Local environment	
Flat Laying	Sandstone	185x75 cms	Rectangle	Grass to edges, headstone to W	
Facing East				PHOTO ID P1040099	
Engraving?					
Damage					
Remarks	Some Moss on surface				

Inscription/engraving:

ERECTED  
BY  
JOHN LIVINGSTONE

#241



# Condition report

#242

Orientation	Material	Size	Shape	Local environment	
Flat laying	Sandstone	190x70cm	Parallel sided slab bottom left corner missing	Grass to edges and covering	
Facing up read to west				PHOTO ID P1040064	
Engraving?					
Damage			Lichen: white leprose patches		
Remarks					

## Inscription/engraving:

ERECTED  
BY  
JOHN LIVINGSTONE  
IN  
MEMORY OF HIS FATHER

ARCHIBALD  
 WHO DIED AT TORINTURK IN 1819  
 AND OF  
 MARY HIS SISTER WHO DIED NOV 1819  
 AGED 2 YEARS  
 ALSO OF  
 HIS MOTHER CATHERINE M<sup>C</sup>INTYRE  
 WHO DIED AT OBAN APRIL 18TH 1849  
 AGED 65 YEARS

#242



# Condition report

#243

Orientation	Material	Size	Shape	Local environment
Headstone upright	Sandstone	175 x 65 x 15 cms	Rectangular with curved top obelisk	Grass to base bottom of slope
Facing East				PHOTO ID P1030985
Engraving?	Wreath and ribbon in curved top, rolled border around gravestone			
Damage			Lichen: White foliose on top edge and orange (?) on plinth	
Remarks				

## Inscription/engraving:

ERECTED

By

JOHN LIVINGSTON,

MERCHANT, OBAN,

IN MEMORY OF MARY COWAN.

HIS BELOVED WIFE. WHO DIED AT

OBAN. ON THE 24<sup>TH</sup> DECEMBER

1864. AGED 50 YEARS,

ALSO, OF HIS SON,

ARCHIBALD,

WHO DIED IN INFANCY.

THE ABOVE

JOHN LIVINGSTON,

DIED AT WOODLEIGH, OBAN

15<sup>TH</sup> OCTOBER 1898,

AGED 89 YEARS

#243



Condition report

#244

Orientation	Material	Size	Shape	Local environment	
Flat laying-looks fallen	Sandstone	130x55x15 cms	Parallel sided with plinth	Grass to edges	
Facing East				PHOTO ID P1040065	
Engraving?					
Damage	Fallen		Lichen: sparse white and yellow/orange leprose.		
Remarks	Large patches of orange and black fungus  RM23a: By Angus McKinnon, Barnabuck his sons Lachlan McKinnon aged 39 years and Allan McKinnon aged 28 years died 7/9/1865				

Inscription/engraving:

ERECTED

BY

ANGUS MCKINNON

BARNABUCK

IN MEMORY OF HIS SONS

LACHLAN MCKINNON

AND

ALLAN MCKINNON

AGED 28 YEARS

WHO DEPARTED THIS LIFE

7<sup>TH</sup> SEPTEMBER 1865

#244





Condition report

#245

<b>Orientation</b> Flat	<b>Material</b> Slate	<b>Size</b> 55 x 50 cms	<b>Shape</b>	<b>Local environment</b>	
<b>Facing</b> Upwards					
<b>Engraving?</b>	None				
<b>Damage</b>					
<b>Remarks</b>					

Inscription/engraving: None

# Condition report

#246

Orientation	Material	Size	Shape	Local environment
Headstone upright	Sandstone.	145 x 65 x 20 cms.	Rectangular with triangular top	Grass to base At bottom of slope
Facing East				PHOTO ID P1030978
Engraving?	'1884' in triangle at top			
Damage			Lichen: Some blue/grey crustose and foliose at the edges	
Remarks	Bottom left corner has some flaking off the surface			

## Inscription/engraving:

ERECTED BY  
JOHN BROWN  
TENANT DALNACABAIG  
IN MEMORY OF HIS BELOVED WIFE  
ANN M<sup>C</sup>PHAIL  
WHO DIED 7<sup>TH</sup> JANUARY 1883  
AGED 47 YEARS,  
ALSO HIS DAUGHTER.  
MARGRET BROWN  
DIED 13<sup>TH</sup> JANUARY 1883 AGED 13 YEARS  
*THE ABOVE* JOHN BROWN  
DIED AT KILMORE 12<sup>TH</sup> JANUARY 1908  
AGED 69 YEARS  
J. MONTGOMERY OBAN



#246



Condition report

#247

<b>Orientation</b> Flat	<b>Material</b> Sandstone	<b>Size</b> 185 x 70 cms	<b>Shape</b> Main stone and plinth	<b>Local environment</b>	
<b>Facing -fallen</b>					
<b>Engraving?</b>	None				
<b>Damage</b>	Fallen on face				
<b>Remarks</b>					

Inscription/engraving: None

Condition report

#248

<b>Orientation</b>	<b>Material</b>	<b>Size</b>	<b>Shape</b>	<b>Local environment</b>	
Flat laying	Slate	Not Measurable	Only 10cm showing		
<b>Facing</b>					
<b>Engraving?</b>	None visible				
<b>Damage</b>					
<b>Remarks</b>	MAINLY COVERED BY #247				

Inscription/engraving: NOT VISIBLE

Condition report

#249

<b>Orientation</b>	<b>Material</b>	<b>Size</b>	<b>Shape</b>	<b>Local environment</b>	
Flat laying	Slate	185x65cms		grass to edges and graveslab to N	
<b>Facing</b> East				PHOTO ID P1040083	
<b>Engraving?</b>					
<b>Damage</b>	Partial cracks				
<b>Remarks</b>	Adjacent to fallen stone under which is another				

Inscription/engraving:

HUGH M<sup>c</sup>E

#249



# Condition report

#250

Orientation	Material	Size	Shape	Local environment	
Flat Laying	Sandstone	140X65cms		Grass to edges	
Facing East				PHOTO ID P1040084	
Engraving?					
Damage					
Remarks					



Inscription/engraving:

M<sup>C</sup>EA<sup>N</sup>

#250



Condition report

#251

Orientation	Material	Size	Shape	Local environment
Erect Stone	Sandstone		Almost square,	Grass to base, small fallen stone (enclosure chain holder) in front
Facing	East			PHOTO ID P1030977
Engraving?	:			

<b>Damage</b>	General weathering		Lichens: Crustose at and on edges, and black fungus
<b>Remarks</b>	Black fungus and moss scattered over face.  RM22: James Anderson, Supervisor of Excise at Oban died 25/7/1812 in 9 <sup>th</sup> year		

Inscription/engraving:

SACRED TO THE MEMORY  
 OF  
 JAMES ANDERSON  
 SUPERVISOR OF EXCISE AT OBAN  
 WHO DIED ON THE 24TH MAY  
 MDCCCXII  
 THE 49<sup>TH</sup> YEAR OF HIS AGE  
 ERECTED BY  
 M...ANDERSON HIS WIDOW

#251



Condition report

#252

Orientation	Material	Size	Shape	Local environment
Headstone upright	Grey polished granite	main stone 135 x 70 x 15 upper, plinth 30 x 90 x 30  lower plinth 45 x 105 x 45	Rectangular with pointed arch top	Double plinth in railed enclosure  Grass to base
Facing East				PHOTO ID 1040058
Engraving?	.			
Damage				
Remarks	Faint evidence of gold lettering. Moss on bottom plinth			

Inscription/engraving:

ERECTED

in loving memory of

ELIZABETH LAMONT

MACARTHUR

WHO DIED AT LAGNAKIEL, LERAGS.

24<sup>TH</sup> JULY 1912, AGED 18 YEARS

*ALSO HER BROTHER*

HUGH

DIED 19<sup>TH</sup> SEP. 1914 AGED 30 YEARS

*AND THEIR FATHER*

DONALD MACARTHUR

DIED AT ACHALIG, LERAGS,

13<sup>TH</sup> DEC<sup>R</sup> 1920, AGED 73 YEARS.

*ALSO THEIR MOTHER*

ELIZABETH LAMONT MACARTHUR

WHO DIED AT 7, CAWDOR PLACE OBAN

ON 9<sup>TH</sup> OCT. 1935 AGED 80 YEARS

AND THEIR DAUGHTER MARY SARAH WIDOW OF  
CAPT DONALD MACPHEE,  
ACHALIC,  
DIED AT CLACNACHARRA TAYNUILT  
19<sup>TH</sup> FEB, 1952 AGED 56

#252



Condition report

#253

<b>Orientation</b>  Headstone upright	<b>Material</b> Sandstone	<b>Size</b> 57 x 65 x 16 cms	<b>Shape</b>  Small rectangular with ornamented top	<b>Local environment</b>  Grass to base	
<b>Facing</b> East				PHOTO ID 1040014	
<b>Engraving?</b>					
<b>Damage</b>			Lichen: white foliose on top edges small patches on E face		
<b>Remarks</b>	Very mossy and eroded. Difficult to read  RM15: (very sunken and worn)Here lyes the corpse of John McInnes who died on ?				

Inscription/engraving:

HERE LIES THE CORPSE OF

JOHN McInn

WHO DIED ON

THE

Dec

TO HIS

#253



Condition report

#254

Orientation	Material	Size	Shape	Local environment	
Flat	Slate	200 x 65 cms		Grass and other tombstones	
<b>Facing</b> East-west					
<b>Engraving?</b>					
<b>Damage</b>					
<b>Remarks</b>					

Inscription/engraving: No inscription



# Condition report

#255

Orientation	Material	Size	Shape	Local environment
Flat Laying	Slate	180X60cms		Headstone at W edge, grass to edges
Facing East				PHOTO ID P1040115
Engraving?				
Damage	Spots of rust due to pyrites in slate			
Remarks				

Inscription/engraving:

JOHN M<sup>C</sup>CULLOCH

#255







Condition report

#256

Orientation	Material	Size	Shape	Local environment	
Flat Laying	Slate	200 x 70 cms	Rectangular	Grass to top and bottom  Other graveslabs touching left and right sides	
Facing East					
Engraving?	Simple border				
Damage					
Remarks					

Inscription/engraving:

JOHN McCULLOCH

#256



Condition report

#257

<b>Orientation</b> Flat Laying	<b>Material</b> Slate	<b>Size</b> 220 x 60 cm	<b>Shape</b>	<b>Local environment</b>	
<b>Facing</b> East					
<b>Engraving?</b>	None				
<b>Damage</b>					
<b>Remarks</b>					

Inscription/engraving: None

# Condition report

#258

<b>Orientation</b> Flat laying	<b>Material</b> Sandstone	<b>Size</b> 145 x 50 cm	<b>Shape</b> Slightly domed upper surface.Slight tapering at foot	<b>Local environment</b>  Grass to edges	
<b>Facing</b> East				PHOTO ID P1040116	
<b>Engraving?</b>					
<b>Damage</b>					
<b>Remarks</b>					

Inscription/engraving:

I M<sup>C</sup>C

#258



#### Condition report

#259

Orientation	Material	Size	Shape	Local environment	
Flat laying	Slate: flaking	160 x 50 cms		Grass to edges	
Facing East				PHOTO ID P1040108	
Engraving?					
Damage					
Remarks	Remarks:Inscription incomplete due to severe flaking of the slate.				

Inscription/engraving:

(H)ERE LIES

(RE)MAINS

ND F IAILAC

(W)HO DEPA

THIS LIFE

R IN INFANC(Y)

(ME)MORY

THERE

(DO)NALD M

ASON OF

1821

#259







Condition report

#260

<b>Orientation</b> Flat	<b>Material</b> Sandstone	<b>Size</b> 220 X 70 Cms	<b>Shape</b>	<b>Local environment</b> Grass to edges	
<b>Facing</b> East				PHOTO ID  P1040140	
<b>Engraving?</b>					
<b>Damage</b>					
<b>Remarks</b>	It is difficult to be sure if the age (55) is correct due to erosion.				

Inscription/engraving:

1854  
 TO THE MEMORY  
 OF  
 JOHN LAMOND  
 WHO DIED ON THE 20 MAY  
 1825 AGED 55 YEARS  
 THIS STONE IS PLACED  
 BY HIS SON  
 MALCOLM LAMOND

#260



Condition report

#261

<b>Orientation</b> Fallen on face	<b>Material</b> Sandstone	<b>Size</b> 105 x 75 cms	<b>Shape</b>	<b>Local environment</b>	
<b>Facing</b> Fallen on face,					
Engraving?	None visible				
Damage					
Remarks	Inscription not visible-fallen on face.				

Inscription/engraving: NONE visible

# Condition report

#262

Orientation	Material	Size	Shape	Local environment	
Flat	Slate	210 x 770 cm		Grass to and over edges	
Facing East				PHOTO ID P1040141	
Engraving?					
Damage					
Remarks					

Inscription/engraving:

DUNCAN

1779

#262





Condition report

#263

Orientation	Material	Size	Shape	Local environment	
Flat laying	Slate	200X65 cm		Grass to edges	
Facing East				PHOTO ID P1040100	
Engraving?					
Damage					
Remarks	RM indicated first name FARQUHAR, RM21: Farquar McCowan 1803				

Inscription/engraving:

MCCOWAN

1803

#263



#### Condition report

#264

Orientation	Material	Size	Shape	Local environment	
HeadStone upright	Sandstone.	145 x 65 x 15 cms	Rectangular with triangular top	Grass to base	
Facing East				PHOTO ID 1030984	
Engraving?					
Damage			Lichen: White crustose and green/grey foliose patches on edges also possibly <i>Physconia grisea</i> .		
Remarks	Some moss on edges				

#### Inscription/engraving:

1870

ERECTED

BY JEAN MCDONALD

IN MEMORY

OF HER BELOVED HUSBAND

COLIN MCDONALD

TEACHER

WHO DIED JUNE 28<sup>TH</sup> 1869.

AGED 80 YEARS

JEAN MCDONALD

DIED 29<sup>TH</sup> JULY 1874

AGED 77 YEARS

On Plinth: For me to live in Christ and to die is gain  
Philip. 1.21



#264



Condition report

#265

Orientation	Material	Size	Shape	Local environment	
Flat LAYING	Sandstone	205 x 70 cm		Grass surrounded by other laying slabs	
Facing East					
Engraving?					
Damage					
Remarks					

Inscription/engraving: None

# Condition report

#266

Orientation	Material	Size	Shape	Local environment	
Upright leaning against wall	Sandstone.	70 x 70 x 10 cms	Irregular	Leaning against west wall of church north of doorway	
Facing West				PHOTO ID P1040252	
Engraving?					
Damage	Upper right quadrant broken off		Lichen: White crustose patches including <i>Lecanora rupicola</i> , <i>Physcia leptalea</i>		
Remarks	RM20: head stone - against church wall, sunken and broken. Of John Cameron late innkeeper, Oban				

## Inscription/engraving:

HERE LIES THE .....  
 ..NS OF JOHN CAME  
 LATE INNKEEPER  
 WHO DIED ON  
 OFAUGUST 1816 AGED 39  
 YEARS THIS STONE IS  
 ERECTED TO HIS MEMORY  
 & ANN CAMERON HIS  
 SPOUSE



#266

# Condition report

#267

Orientation	Material	Size	Shape	Local environment
Headstone upright	Sandstone	100 x 60 15 cms	Rectangular with rounded and obelisk top.	SW corner of railed enclosure  south edge of gravestone meets outer north wall of NW corner of kirk
Facing East				PHOTO ID P1040232
Engraving?	2 rosettes in circles in rounded top, simple borders			
Damage			Lichen: small patches white and grey/green crustose, green/grey foliose on edges. Some orange/brown amorphous patches	
Remarks	Moss on east face  RM16a: Elizabeth eldest daughter of John MacEachnie merchant , Oban died 20/8/1813 aged 6 years and Helen died 7/8/1816 aged 1 <sup>1</sup> / <sub>2</sub> years.			

## Inscription/engraving:

IN MEMORY  
OF ELIZABETH  
ELDEST DAUGHTER  
OF JOHN MACEACH  
=NIE MERCHANT IN  
OBAN WHO DEPART  
=ED THIS LIFE UPON  
THE 20<sup>TH</sup> OF AUGUST  
1813 AGED 6 YEARS  
AND HELEN WHO  
DEPARTED THIS LIFE

27TH AUGUST 1816 AGED

ONE YEAR AND AN

HALF

#267



Condition report

#268

Orientation	Material	Size	Shape	Local environment	
Flat-laying table tomb	Sandstone	210 x 75 x 15 cms: Pediment height 30 cms	Rectangle	In railed enclosure at North and outwith NW corner of kirk	
Facing East				PHOTO ID 1040233	
Engraving?					
Damage					
Remarks	Moss on surface particularly at the edges  RM 16: By Helen Bayne-her husband John MacEachnie late merchant in Oban died 29/12/1829 aged 50 years				

Inscription/engraving:

ERECTED  
BY  
HELEN BAYNE  
in memory of her husband  
JOHN MACEACHNIE  
Late Merchant  
in OBAN  
who died on the 29<sup>th</sup> DEC 1829  
Aged 50 years





#268



# Condition report

#269

Orientation	Material	Size	Shape	Local environment
Headstone upright	Grey Granite	Main panel 85 x 50 x 12 Plinth 30 x 70 x 30	Rectangular with curved top main stone on plinth	within railed enclosure
Facing East				PHOTO ID P1030995
Engraving?				
Damage				
Remarks	Weathered inscription. Black lettering difficult to read			

## Inscription/engraving:

IN

Loving Memory of

JOHN CAMPBELL

AGED 58 YEARS.

*AND OF HIS WIFE*

JANE LIVINGSTONE

AGED 87 YEARS.

ALSO THEIR SONS

ARCHIE DIED IN AUSTRALIA

ALEXANDER DROWNED AT SEA

AND THEIR GRANDSON

JOHN MARSHALL

AGED 4 YEARS

ERECTED BY THEIR DAUGHTER

MARGARET CAMPBELL MAXTON

#269



Condition report

#270

Orientation	Material	Size	Shape	Local environment	
Flat laying	Sandstone	190X50 cm			
Facing Up read to-West					
Engraving?	NONE				
Damage					
Remarks					

Inscription/engraving: NONE

Condition report

#271

<b>Orientation</b> Flat laying	<b>Material</b> Sandstone	<b>Size</b> 75X40 cm	<b>Shape</b>	<b>Local environment</b> Grass to base	
<b>Facing Up</b>					
<b>Engraving?</b>	NONE				
<b>Damage</b>					
<b>Remarks</b>					

Inscription/engraving: NONE

Condition report

#272

<b>Orientation</b>  Flat laying	<b>Material</b>  Sandstone	<b>Size</b>  200X65 cms	<b>Shape</b>  Parallel sided	<b>Local environment</b>  Grass to edges	
<b>Facing</b> East				PHOTO ID P1040089	
Engraving?					
Damage					
Remarks	Some flaking of slate so loss of some text  RM28: By Dugald McGrigor, ship-master, his father Alexander McGrigor died 1757 aged 62 years				

Inscription/engraving:

*This stone was*

*Laid here by Dug<sup>d</sup>*

*M<sup>c</sup>Grigor shipmaster*

*as a memory of his*

*father Alex<sup>r</sup> M<sup>c</sup>Gri..*

*who departed this life*

*anno 1756 aged 62*

#272





Condition report

#273

<b>Orientation</b> Flat laying	<b>Material</b> Sandstone	<b>Size</b> 170X50 cm	<b>Shape</b>	<b>Local environment</b>	
<b>Facing</b>					
<b>Engraving?</b>	NONE				
<b>Damage</b>					
<b>Remarks</b>					

Inscription/engraving: NONE

Condition report

#274

Orientation	Material	Size	Shape	Local environment	
Flat laying	Slate	175 x 50 cm	Parallel sided	Grass to edges, slab to S	
Facing East				PHOTO ID P1040145	
Engraving?					
Damage					
Remarks					

Inscription/engraving:

1752

A M K

#274



Condition report

#275

<b>Orientation</b> Erect	<b>Material</b> Sandstone	<b>Size</b> 107 x 63 x 18 cms	<b>Shape</b> Rectangular with triangular top	<b>Local environment</b>  Grass to base	
<b>Facing</b> East				PHOTO ID	P1030996
<b>Engraving?</b>					
<b>Damage</b>			Lichen: White crustose leprose and green/grey foliose on E		
<b>Remarks</b>	Badly eroded and difficult to read, brown and black fungus				

Inscription/engraving:

DONALD M<sup>C</sup>LACHLAN

ERECTED

DUTIFUL SON

JOHN

OF

DIED ON

THE 22<sup>N</sup> OF



#275

# Condition report

#276

Orientation	Material	Size	Shape	Local environment
Headstone upright	Sandstone	174 x 71 x 22 cms	Rectangular on plinth with ornamental obelisk top	Grass to base stone wall at the rear of the gravestone
Facing East				PHOTO ID P1040005
Engraving?	Wreath in obelisk top			
Damage			Lichen: white leprose and crustose patches on E surface, grey/green foliose on obelisk top	
Remarks	Moss scattered all over  RM12: 1870. By Alexander Peter McArthur-his father Neil McArthur died at Dunach 20/3/1823 aged 34 years, his mother Mary McGregor died at Glencrutten 28/12/1846 aged 53 years.			

## Inscription/engraving:

1870

ERECTED

BY

ALEX<sup>R</sup> AND PETER M<sup>C</sup>ARTHUR

IN MEMORY OF THEIR FATHER

NEIL M<sup>C</sup>ARTHUR WHO DIED <sup>AT</sup> DUNAC

MARCH 20<sup>TH</sup> 1823 AGED 34 YEARS

ALSO,

THEIR MOTHER MARY M<sup>C</sup>GREGOR

WHO DIED AT GLENCRUTTEN.

DECEMBER 28<sup>TH</sup> 1846 AGED 57 YEARS

#276





Condition report

#277

Orientation	Material	Size	Shape	Local environment	
Flat: fallen on face	Sandstone	Plinth: 60 x 90 x 40(still erect) Main Stone: 95 x 75 cms Upper Stone: 25 x 75 cms Pediment: 60 x 35 cms	Plinths at bottom with obelisk top	Grass Adjacent to east end of walled enclosure (6m S of south wall of kirk)	
Facing Downwards:				PHOTO ID 1040254	
Engraving?	None visible				
Damage	Fallen and broken				
Remarks	Completely covered in moss				

Inscription/engraving:

#277



Condition report

#278

<b>Orientation</b> Flat laying	<b>Material</b> Sandstone	<b>Size</b> 210 x 80 cms	<b>Shape</b>	<b>Local environment</b>	
<b>Facing</b>					
<b>Engraving?</b>					
<b>Damage</b>					
<b>Remarks</b>					

Inscription/engraving: None

Condition report

#279

<b>Orientation</b> Flat laying	<b>Material</b> Slate	<b>Size</b> 195 x 75 cms	<b>Shape</b> Parallel sided	<b>Local environment</b>  Grass to edges	
<b>Facing</b> East				PHOTO ID P1040146	
<b>Engraving?</b>					
<b>Damage</b>	with some flaking		Lichen: spots of crustose		
<b>Remarks</b>	It is not posible to read the last number of her age  RM11: Sarah McDougall spouse to Hugh McLugash (Letileraf) Oban died January 1790 aged 3? Years				

Inscription/engraving:

HERE LIES THE CORPSE  
 SARAH M<sup>C</sup>DOUGALL  
 SPOUSE TO HUGH M<sup>C</sup>  
 LUGASH MILLER AT  
 OBAN AND DIPARTED THIS LIFE ON  
 JAN 1790 AGED 3?  
 A.M.L.

#279



Condition report

#280

<b>Orientation</b> Flat laying	<b>Material</b> Slate	<b>Size</b> 190 x 60 cms	<b>Shape</b>	<b>Local environment</b>	
<b>Facing East</b>					
<b>Engraving?</b>					
<b>Damage</b>					
<b>Remarks</b>					

Inscription/engraving: None visible

# Condition report

#281

Orientation	Material	Size	Shape	Local environment	
Flat laying	Sandstone	210 x 65 Cms	Parallel sided slab	Grass to edges and covering,  3m south of kirk 7m west of MacDougall Burial Aisle	
Facing East				PHOTO ID P1940230	
Engraving?					
Damage					
Remarks	Year of death not decipherable				

## Inscription/engraving:

IN  
MEMORY  
OF  
DONALD MACPHAIL  
WHO  
departed this Life  
18.. Aged 36 years  
Erected by his Father  
ARCH MACPHAIL  
1838





#281



Condition report

#282

<b>Orientation</b> Flat laying	<b>Material</b> Sandstone	<b>Size</b> 185 X 60 Cms	Shape	<b>Local environment</b>  Grass to base	
<b>Facing</b> East				PHOTO ID P1040228	
<b>Engraving?</b>					
<b>Damage</b>					
<b>Remarks</b>	Lowest line of inscription barely visible. Cracked south-west corner				

Inscription/engraving:

AIL

A M<sup>C</sup> PH

#282



# Condition report

#283

Orientation	Material	Size	Shape	Local environment
Flat laying	Sandstone	195 x 85 cms	Parallel sided	Grass to edges and covering  2m south of kirk  South wall 7m west of MacDougall Burial Aisle
<b>Facing</b> East				PHOTO ID P1040225
Engraving?				
Damage				
Remarks	<p>No date of Allan's death</p> <p>RM9: Inscription partly worn away. Allan McDougall died aged 22 years, his brother Neil died 2/3.18(4 or 1) aged 32 years. Stone placed by their brother Duncan, tenant, Gallanach.</p>			

## Inscription/engraving:

IN MEMORY

OF

ALLAN M<sup>C</sup>DOUGALL

who died

Aged 22 Years

And his Brother

NIEL

who died

on the 2<sup>nd</sup> day of March

1815

Aged 32 Years

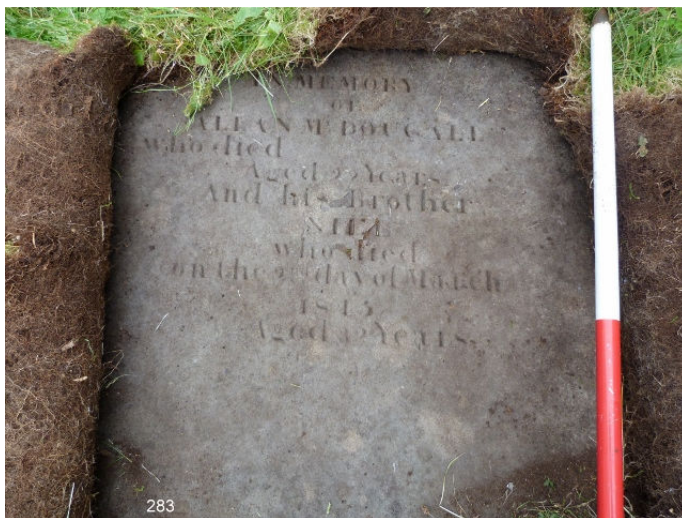
This stone is placed here

by their brother

DUNCAN M<sup>C</sup>DOUGALL

Tenant Gallanach

#283



Condition report

#284

Orientation	Material	Size	Shape	Local environment
Erect	Sandstone	150 x 74 x 21 cms	Rectangular with triangular top	Grass to base, also rock debris
Facing East				PHOTO ID P1040001
Engraving?	Seven point star in triangular top, and a rose in each of the two edges at the front			
Damage			Lichen; very few sparse lichen areas, leprose and some crustose	
Remarks	Heavily encrusted with moss at edges and on top			

Inscription/engraving:

ERECTED BY  
DUGALD M<sup>C</sup>ARTHUR  
IN MEMORY OF HIS FATHER  
FARMER ARIOGAN DIED 25<sup>TH</sup> AUG  
1861 AGED 65 YEARS

#284



# Condition report

#285

Orientation	Material	Size	Shape	Local environment
Headstone upright	Granite	147 x 64 x 13 cms	Rectangle with semicircular top	Grass to base
Facing East				PHOTO ID P1030997
Engraving?				
Damage				
Remarks	"J+G Mossman" on base at right			

## Inscription/engraving:

DONALD McCONOCHIE  
 JOINER OBAN  
 IN MEMORY OF  
 HIS FATHER  
 JOHN McCONOCHIE  
 DIED AT DUNACH 28<sup>th</sup> APRIL 1855  
 AGED 54 YEARS  
 SARAH PATERSON HIS MOTHER  
 DIED AT OBAN 7<sup>th</sup> APRIL 1885  
 AGED 82 YEARS  
 THEIR CHILDREN  
 SARAH DIED IN INFANCY  
 MARY  
 DIED 12<sup>th</sup> OCT<sup>R</sup> 1876 AGED 35 YEARS  
 ALSO THE ABOVE  
 DONALD McCONOCHIE



WHO DIED AT OBAN 14<sup>th</sup> JULY 1913

AGED 73 YEARS

AND HELEN HIS SISTER

WHO DIED AT OBAN 22<sup>nd</sup> JANUARY 1938

AGED 81 YEARS

#285



Condition report

#286

<b>Orientation</b> Flat laying	<b>Material</b> Sandstone	<b>Size</b> 180 x 60 cms	<b>Shape</b>	<b>Local environment</b>	
<b>Facing</b> Upwards: east-west					
<b>Engraving?</b>	None				
<b>Damage</b>					
<b>Remarks</b>					

Inscription/engraving: None

# Condition report

#287

<b>Orientation</b> Flat laying	<b>Material</b> Sandstone	<b>Size</b> 150 x 55 cms	<b>Shape</b>	<b>Local environment</b>  Grass to edges	
<b>Facing</b> East				PHOTO ID P1040201	
<b>Engraving?</b>					
<b>Damage</b>			Lichen: some yellow patches		
<b>Remarks</b>					

Inscription/engraving:

JOHN M<sup>C</sup>CALLUM

OBAN

#287





# Condition report

#288

<b>Orientation</b> Horizontal	<b>Material</b> Slate	<b>Size</b> 199 x 68 cms	<b>Shape</b> Rectangle	<b>Local environment</b> Grass to edges	
<b>Facing</b> East				PHOTO ID P1040009	
<b>Engraving?</b>	Simple rolled border				
<b>Damage</b>			Lichen: Large white/grey crustose areas		
<b>Remarks</b>	RM8: Ann McDougall Daughter of Donald McDougall, tenant Molie died 2/5/1844 aged 18 year, his son Dugald died at Glencrutten 27/10/1853 aged 29 years, his wife Mary Campbell died at Oban 22/7/1883 aged 84 years.				

## Inscription/engraving:

IN MEMORY  
 OF  
 ANN M<sup>C</sup>DOUGALL  
 DAUGHTER OF  
 DONALD M<sup>C</sup>DOUGALL  
 TENANT MOLIE WHO  
 DIED 2<sup>D</sup> MAY 1884  
 AGED 18 YEARS  
 MUCH LAMENTED BY  
 HER PARENTS  
 ALSO  
 HIS SON DUGALD WHO DIED  
 AT GLENCRUTTEN 27<sup>TH</sup> OCT<sup>R</sup> 1853  
 AGED 29 YEARS

AND ALSO  
 OF HIS WIFE MARY CAMPBELL  
 WHO DIED AT OBAN 22<sup>ND</sup> JUNE  
 1883 AGED 88 YEARS  
 MY GLASS HAS RUN AND THINE IS RUNNING  
 DEATH IS SURE AND JUDGEMENT COMING

#288



Condition report

#289

Orientation	Material	Size	Shape	Local environment
Flat laying	Slate	200 x 75 cms	Rectangle	Grass to edges graveslab to S
Facing East				PHOTO ID P1040010
Engraving?				
Damage			Lichen: sparse white/grey crustose patches on face (E)	
Remarks	RM7: John McDougall son of Donald McDougall, tenant. Molie died 12/4/1844 aged 16 years and his brother and 2 sisters who died young and also his son Archibald who died at Glencrutten 23/9/1853 aged 23 years and of their father died at Glencrutten 12/3/63 aged 72 years, also Donald, inspector of Poor, son of the above named Donald McDougall died Oban 21/1/1884 aged 47 years			

Inscription/engraving:

IN MEMORY OF  
 JOHN M<sup>C</sup>DOUGALL  
 SON OF  
 DONALD M<sup>C</sup>DOUGALL  
 TENANT AT MOLIE WHO DIED  
 THE 12TH APRIL 1844  
 AGED 16 YEARS  
 MUCH LAMENTED BY HIS  
 PARENTS  
 ALSO IN MEMORY OF HIS  
 BROTHER AND TWO SISTERS

WHO DIED YONG  
ALSO  
OF HIS SON ARCHIBALD WHO DIED  
AT GLENCRUTTEN 23<sup>RD</sup> SEPT 1853  
AND  
OF THEIR FATHER  
WHO DIED AT GLENCRUTTEN  
12<sup>TH</sup> MARCH 1863  
AGED 72 YEARS  
ALSO  
OF DONALD INSPECTOR OF POOR OBAN  
SON OF THE ABOVE NAMED  
DONALD M<sup>C</sup>DOUGALL  
WHO DIED AT OBAN 1<sup>ST</sup> JANUARY 1884  
AGED 47 YEARS

Remarks: YONG (sic)

#289





289

Condition report

#290

<b>Orientation</b> Flat	<b>Material</b> Sandstone	<b>Size</b> 200 x 65 cms	<b>Shape</b>	<b>Local environment</b>	
<b>Facing</b>					
<b>Engraving?</b>	None				
<b>Damage</b>					
<b>Remarks</b>					

Inscription/engraving: None

# Condition report

#291

Orientation	Material	Size	Shape	Local environment
Headstone upright	Granite	173 x 80 x 18 cms	Rectangle with pointed curved top	Grass to base  South wall of kirk perpendicular to the north edge of the gravestone
Facing East				PHOTO ID P1040006
Engraving?	:			
Damage			Lichen: few white crustose and leprose on edge	
Remarks				

## Inscription/engraving:

ERECTED  
BY  
DUNCAN M<sup>C</sup>DOUGALL  
IN MEMORY OF HIS FATHER  
DUNCAN M<sup>C</sup>DOUGALL  
LATE TENANT OF MOLIE  
WHO DIED AT ARDINTALLIN 29 AUG 1861  
AGED 64 YEARS  
AND HIS MOTHER  
EUPHEMIA M<sup>C</sup>INTYRE  
WHO DIED AT CALLAGH  
26 AUG 1879  
AGED 72 YEARS

#291



# Condition report

#292

Orientation	Material	Size	Shape	Local environment	
Headstone upright	Sandstone	161 x 60 x 17 cm	Rectangular with semicircular top	Grass to base at front (W) and sides. West wall of ruined church at rear (E)	
Facing West					
Engraving?	Inside semicircular top; flowers, three semicircle border				
Damage	Large flaking damage on inscription face, some weathering of inscription		Lichen: Large white leprose and crustose colonies on front (W)		
Remarks	RM4. By Ann McConachie-her parents Donald McConachie died 22 at Largs, Ayrshire 7/5/1867 aged 80 years. Stone placed by their daughter Catherine, wife of J.McIntyre				

## Inscription/engraving:

ERECTED  
 BY  
 ANN M<sup>C</sup>CONACHIE  
 IN MEMORY OF  
 HER PARENTS  
 DONALD M<sup>C</sup>CONACHIE  
 WHO DIED JAN 22<sup>ND</sup> 1835  
 AGED 78 YEARS,  
 HIS WIFE  
 MARY M<sup>C</sup>DOUGALL  
 WHO DIED OCTOBER 1, 1846,  
 AGED 74 YEARS  
 THE ABOVE  
 ANN M<sup>C</sup>CONACHIE

WHO DIED AT LARGS AYRSHIRE MAY

7<sup>TH</sup> 1867 AGED 68 YEARS

WOOD

GREENOCK

#292



Condition report

#293

<b>Orientation</b>  Flat	<b>Material</b>  Slate	<b>Size</b>  155 x 60 cms	<b>Shape</b>  Parallel slab	<b>Local environment</b>  Grass to base	
<b>Facing</b> East				PHOTO ID	P1040209
<b>Engraving?</b>					
<b>Damage</b>	Very worn inscription		Lichen: Sparse large crustose patches		
<b>Remarks</b>	RM 6: Christina MacDougall died at Largs 30/3/1830 aged 63 years by John MacConachie				

Inscription/engraving:

IN MEMORY  
CHRISTINA MACDOUGALL  
who died at Largs  
on the 30<sup>th</sup> March 1839  
aged 65 years  
Erected by  
JOHN M<sup>c</sup>CONOCHIE

#293



Condition report

#294

Orientation	Material	Size	Shape	Local environment	
Flat	Slate	175 x 45 cm			
<b>Facing</b> East					
Engraving?	None				
Damage					
Remarks	Partially covered by next stone and may be wider than measured.				

Inscription/engraving: None



Condition report

#295

<b>Orientation</b>	<b>Material</b>	<b>Size</b>	<b>Shape</b>	<b>Local environment</b>	
Flat	Slate	80 x 55 cm			
<b>Facing</b>					
<b>Engraving?</b>	None				
<b>Damage</b>					
<b>Remarks</b>	Lying at the west end of stone 293				

Inscription/engraving:

Condition report

#296

Orientation	Material	Size	Shape	Local environment	
Flat	Sandstone	175 x 50 cms			
Facing East					
Engraving?	None				
Damage					
Remarks	Triangular point to west end of stone				

Inscription/engraving:

Condition report

#297

Orientation	Material	Size	Shape	Local environment	
Headstone upright	Sandstone	142 x 66 x 16 cm	Rectangle with triangular top above semicircular top border	Grass to base	
Facing East				PHOTO ID P1040002	
Engraving?	Inverted horseshoe in semicircular top flanked by floral design. Heavy cable bordering main panel				
Damage			Lichen: White crustose patches on edges and rectangle top edges		
Remarks	Inscription region weathered and flaking				

Inscription/engraving:

ERECTED  
BY  
COLL M<sup>C</sup>DOUGALL,  
IN MEMORY OF  
HIS FATHER ALLAN M<sup>C</sup>DOUGALL,  
WHO DIED AT SOROBA  
2 JULY 1881 AGED 74 YEARS,  
ALSO HIS SON NICOL  
WHO DIED 1 JAN<sup>y</sup> 1858  
AGED 7 YEARS

#297



# Condition report

#298

Orientation	Material	Size	Shape	Local environment
Headstone upright	Sandstone	173 x 80 x 18 cm	Rectangle with triangular top. Plinth	Grass to base on 3 sides.  Kirk wall at back
Facing West				PHOTO ID P1040008
Engraving?				
Damage			Lichen: Crustose leprose and few foliose patches on inscription surface	
Remarks	The R of Christina is omitted, moss covering plinth  RM3. By Mary McCallum-her father John McCallum died 10/8/1833 her mother Christina Mc Caig died21/5/1848 her sister Jessie died 9/6/1836 her brother Donald 28/5/1843 the above Mary McCallum 7/1/1866 aged 87 years			

## Inscription/engraving:

ERECTED BY

MARY M<sup>C</sup>CALLUM

IN MEMORY OF HER FATHER

JOHN M<sup>C</sup>CALLUM

WHO DIED 10<sup>TH</sup> AUGUST 1833

CHISTINA M<sup>C</sup>CAIG

HER MOTHER WHO DIED 21<sup>ST</sup> MAY 1818

JESSIE HER SISTER

WHO DIED 9<sup>TH</sup> JUNE 1836

AND

DONALD HER BROTHER

WHO DIED 8<sup>TH</sup> MAY 1843

ALSO THE ABOVE

MARY MCCALLUM

WHO DIED 7<sup>TH</sup> JAN. 1886

AGED 87

#298



# Condition report

#299

Orientation	Material	Size	Shape	Local environment	
Flat laying	Slate	175 X 50 cms	Tapered slab	Grass to edges surrounded by slabs, southwall of kirk 2m N, West wall of MacDougall Aisle 1m East	
Facing East				PHOTO ID	P1040147
Engraving?	Carved on its northern side is apparently a sceptre. To the south are a series, possibly six, circular impressions (Loch Awe leaf pattern in central area of slab)  double plain moulding, sword and staff on viewers right.				
Damage	Badly worn on surface, difficult to interpret.		Lichen; few patches white crustose		
Remarks	In a position where frequently stepped on to gain access to MacDougall Aisle				

Inscription/engraving: #299







Condition report

#300

Orientation	Material	Size	Shape	Local environment	
Flat laying	Slate	180 x 50 cms		Surrounded by grave slabs  South wall of kirk 2m to north	
Facing					
Engraving?	Badly worn or none				
Damage					
Remarks	This is in a position where it is walked on to gain access to MacDougall burial aisle.				

Inscription/engraving: None

Condition report

#301

Orientation	Material	Size	Shape	Local environment
Flat-Laying	Slate	200 x 68cm	Rectangle	Grass to and covering edges
Facing East				PHOTO ID P1040012
Engraving?				
Damage	Worn		Lichen: Large sparse white leprose colonies	
Remarks	RM 5. Sarah Livingston died November 1835 aged 69 years and her husband Dugald Mc Dougall, Molie died in May 1845 aged 80 years. Stone placed by their daughter Catherine, wife of J McIntyre			

Inscription/engraving:

IN MEMORY  
OF  
SARAH LIVINGSTON  
WHO DIED IN NOV<sup>R</sup>  
1835 AGED 69 YEARS  
ALSO  
OF HER HUSBAND  
DUGALD M<sup>C</sup>DOUGALL  
MOLIE WHO DIED IN  
MAY 1845 AGED 99 YEARS  
THIS STONE IS PLACED HERE  
BY THEIR AFFECTIONATE  
DAUGHTER CATHERINE

WIFE OF J. MCINTYRE AS A  
MARK OF RESPECT FOR THE  
DEPARTED PARENTS

#301



Condition report

#302

<b>Orientation</b> Headstone upright	<b>Material</b> Sandstone	<b>Size</b> 137 x 75 x 19cm	<b>Shape</b> Rectangle with triangular top	<b>Local environment</b> Grass to base	
<b>Facing</b> East				PHOTO ID P1040003	
<b>Engraving?</b>	Inverted horseshoe in triangle				
<b>Damage</b>			Lichen: White crustose lichen at edges, moss on base stone, orange leprose on face and possibly <i>Parmelia sulcata</i>		
<b>Remarks</b>					

Inscription/engraving:

ERECTED  
BY  
DUNCAN M<sup>C</sup>DOUGALL  
BLACKSMITH OBAN,  
IN MEMORY  
OF  
HIS FATHER  
JOHN M<sup>C</sup>DOUGALL  
WHO DIED 16<sup>TH</sup> MARCH 1863  
AGED 84 YEARS  
ALSO OF HIS MOTHER  
FLORA M<sup>C</sup>DONALD  
WHO DIED 22<sup>ND</sup> MARCH 1863

AGED 74 YEARS

#302



Condition report

#303

Orientation	Material	Size	Shape	Local environment
Flat laying	Sandstone	145 x 55 cms	Tapered slab	Grass to edges  2m south of south wall of kirk
Facing East				PHOTO ID P1040208
Engraving?	Only the grip and oval pommel of a Claymore of a centrally located sword is visible in this slab the rest is badly worn/eroded (DG-16) OR ( Hilt and pommel of 2 handed sword DG-8)			
Damage	Badly worn with surface cracks		Lichen: leprose patches on edges	
Remarks	Lying at the entrance to MacDougall Aisle therefore badly worn			

Inscription/engraving:

#303





Condition report

#304

<b>Orientation</b> Flat laying	<b>Material</b> Sandstone	<b>Size</b> 150 x 45 cm	<b>Shape</b>	<b>Local environment</b>	
<b>Facing</b>					
<b>Engraving?</b>	None				
<b>Damage</b>					
<b>Remarks</b>					

Inscription/engraving: None

Condition report

#305

<b>Orientation</b> Flat laying	<b>Material</b> Slate	<b>Size</b> 195 x 45 cm	<b>Shape</b> Slab	<b>Local environment</b>  Grass to edges	
<b>Facing</b> East				PHOTO ID  P1040204	
Engraving?					
Damage	Large area of slate appears to have separated off from north-east corner of stone.			Lichen; sparse leprose	
Remarks					

Inscription/engraving:

I C

#305



Condition report

#306

<b>Orientation</b> Flat laying	<b>Material</b> Sandstone	<b>Size</b> 195 x 70 cm	<b>Shape</b>	<b>Local environment</b>	
<b>Facing</b>					
<b>Engraving?</b>	None				
<b>Damage</b>					
<b>Remarks</b>	Oblique crack all across middle of stone				

Inscription/engraving: None

Condition report

#307

<b>Orientation</b> Flat	<b>Material</b> Slate	<b>Size</b> 210 x 80 cms	<b>Shape</b>	<b>Local environment</b>	
<b>Facing</b>					
<b>Engraving?</b>	None				
<b>Damage</b>					
<b>Remarks</b>					

Inscription/engraving: None

Condition report

#308

Orientation	Material	Size	Shape	Local environment
Headstone upright	Sandstone	185 x 75 x 23 cms	Rectangle with triangular top.	Grass and other laying slabs to E, W and S, Wall of church to the North edge.
Facing East				PHOTO ID P1030998
Engraving?	Ornate engraved border inside edges of slab.			
Damage			Lichen: White crustose and orange (possibly <i>Candelariella spp.</i> ) on main slab.	
Remarks	Writing on base covered in moss. Stone leaning backwards and to the right.			

Inscription/engraving:

ERECTED  
BY  
DANIEL M<sup>C</sup>CLURE  
IN REMEMBRANCE  
OF HIS CHILDREN  
DANIEL WHO DIED 7<sup>TH</sup> NOV 1878  
AGED 4 MONTHS  
ALEXANDER WHO DIED 22<sup>ND</sup> FEB 1881  
AGED 13 MONTHS  
JOHN WHO DIED 22<sup>ND</sup> MARCH 1885  
AGED 9 MONTHS  
ARCHIBALD WHO DIED 19<sup>TH</sup> NOV<sup>R</sup> 1886  
AGED 4½ YEARS  
  
THOM...

#308



*Candelariella* spp



371





# Condition report

#309

Orientation	Material	Size	Shape	Local environment
Headstone upright	Sandstone	232 x 79 x 44cm	Rectangle with square obelisk top plinth bottom	Top covered in ivy, gravestones either side, N wall of MacDougall burial aisle at rear
Facing East				PHOTO ID P1040013
Engraving?				
Damage				
Remarks	The upper part is obscured by ivy but the topmost part is in the form of an urn.  RM 2;. Allan McDougall died in Glenetive 30/8/1831 aged 43 years. His wife Mary McDougall died 23/12/1879 aged 85 years their son Duncan died September 1825 aged 3 years, son Dougall died at Oban30/10/1851 aged 24 years daughter Sarah died at Oban 25/10/18 aged 60 years			

## Inscription/engraving:

ERECTED

IN MEMORY OF

ALLAN M<sup>C</sup>DOUGALL

WHO DIED IN GLENETIVE 30<sup>TH</sup> AUG<sup>T</sup> 1831,

AGED 43 YEARS.

ALSO HIS WIFE MARY M<sup>C</sup>DOUGALL

DIED 23<sup>RD</sup> DEC<sup>R</sup> 1879,

AGED 85 YEARS.

AND THEIR SON DUNCAN,

WHO DIED SEPT<sup>T</sup> 1825,

AGED 3 YEARS  
 AND THEIR SON DOUGALL,  
 DIED AT OBAN, 30<sup>TH</sup> OCT<sup>R</sup> 1851,  
 AGED 24 YEARS.  
 ESTEEMED IN LIFE & LAMENTED AT DEATH  
 ALSO THEIR DAUGHTER SARAH,  
 WHO DIED AT OBAN OCT<sup>R</sup> 25<sup>TH</sup> 1898  
 AGED 60 YEARS

#309



Condition report

#310

Orientation	Material	Size	Shape	Local environment	
Headstone upright	Sandstone	165x75x20 cms	Rounded-semicircular top	Grass to base  Session house east wall to rear	
Facing East				PHOTO ID P1040016	
Engraving?					
Damage			Lichen		
Remarks					

Inscription/engraving:

IN MEMORY  
OF  
CATHERINE, ELDEST  
DAUGHTER OF  
ALLAN CAMPBELL  
CLEIGH

#310



Condition report

#311

Orientation	Material	Size	Shape	Local environment
Erect	Sandstone	87 x 60 x 10 cms	Rectangle with sculpted top	Grass to base and wall at back
Facing West				PHOTO ID P1040015
Engraving?				
Damage			Lichen: White crustose leprose and foliose on W face and edges including <i>Parmelia sulcata</i>	
Remarks	RM 1: Jane Carter died at Dunach 8/5/1838 aged 26 years			

Inscription/engraving:

TO  
THE MEMORY  
OF  
JANE CARTER  
WHO DIED AT DUNACH  
MAY 3<sup>D</sup> 1838  
AGED 26

Being justified freely by his grace  
through the redemption that is in Christ Jesus  
Romans III 21

#311



Condition report

#312

<b>Orientation</b> Stone upright	<b>Material</b> Sandstone	<b>Size</b> 30 x 41 x 5cm	<b>Shape</b>  Small irregular shape stone	<b>Local environment</b>  Grass to base	
<b>Facing</b> West				PHOTO ID P1040017	
<b>Engraving?</b>	None visible				
<b>Damage</b>			Lichen: white crustose and grey/green foliose, possibly including <i>Physcia</i> spp., <i>Pseudocyphellaria lacerate</i> and <i>Parmelia sulcata</i>		
<b>Remarks</b>	W face with patches of moss.				

Inscription/engraving: None that can be deciphered

#312





Condition report

#313

Orientation	Material	Size	Shape	Local environment	
Headstone upright	Slate	105x55x6 cm	Rectangle, ornament on topcircular top	Stone wall behind.	
Facing East				PHOTO ID	P1040060
Engraving?					
Damage			Lichen: sparse brown fungi or lichen over 60% of surface.		
Remarks	Only stone in the kirkyard which also has inscription on its back				

Inscription/engraving:

Front:

Erected

By

Alex<sup>r</sup> Campbell

LATE TENNANT OF CARRACHAN,

AND IN MEMORY OF HIS DAUGHTER

SARAH M<sup>C</sup>CULLOCH CAMPBELL,

WHO DIED AT OBAN,

9<sup>TH</sup> OCT<sup>R</sup> 1881 AGED 9 MONTHS

Back:

A C

#313



# Condition report

#314

Orientation	Material	Size	Shape	Local environment	
Headstone upright	Grey Granite	200 x 76 x 13cm	Rectangle with triangle top. On plinth	Grass and ivy to base Fenced, steep slope down behind (S)	
Facing East					
Engraving?	Floriated border at top simple border around edges. Gold inscription. :				
Damage					
Remarks					

## Inscription/engraving:

In Loving Memory  
of  
ALLAN LIVINGSTON  
FARMER, AUCHOISH. LOCHGILPHEAD  
BORN 15<sup>TH</sup> FEB. 1863, DIED 31<sup>ST</sup> JAN 1908  
ALSO CHRISTINA  
DIED AT 40 GEORGE ST OBAN,  
1<sup>ST</sup> MARCH 1929

#314



Condition report

#315

Orientation	Material	Size	Shape	Local environment	
Headstone upright	Grey Granite	200 x 79 x 16 m	Rectangle with pointed curved top, on plinth at base	Grass to base of plinth, steep hill down at back	
Facing East					
Engraving?					
Damage			Lichen: Few white Leprose and crustose colonies on/at edges		
Remarks					

Inscription/engraving:

In  
 Loving Memory  
 of  
 SARAH LIVINGSTON  
*Daughter of* DUGALD LIVINGSTON  
*FARMER, CLEIGH & BARNACARY*  
 DIED 9<sup>TH</sup> OCT. 1883. AGED 9 YEARS  
*THE SAID*  
 DUGALD LIVINGSTON  
 DIED 2<sup>ND</sup> 1892 AGED 71 YEARS  
*ALSO HIS WIFE*  
 CATHERINE PATERSON

DIED AT GREEN GARDEN

4<sup>TH</sup> OCT 1922 AGED 84 YEARS

*THEIR SON DUGALD*

DIED AT CRAIGMORE, DALMALLY

28<sup>TH</sup> AUGUST 1925

*THEIR DAUGHTER ANNIE*

DIED 27<sup>TH</sup> JANUARY 1957

#315



Condition report

#316

Orientation	Material	Size	Shape	Local environment	
Flat, fallen on back;	Grey Sandstone	62 x 50 x 10 cm	Curved top	Grass to edges	
Facing west				PHOTO ID	P1040023
Engraving?	.				
Damage			Lichen: Some white leprose colonies		
Remarks	The end of the place name is difficult to read. Could it be Chaltuin?  Moss scattered on surface.				

Inscription/engraving:

In  
 Loving Memory  
 of  
 CHARLES MACARTHUR  
 BARRAN - A - CHALTUL..  
 BY OBAN  
 WHO DIED 18<sup>TH</sup> MAY 1935  
 AGED 57 YEARS  
 ERECTED BY HIS BROTHER  
 DUGALD





#316



# Condition report

#317

Orientation	Material	Size	Shape	Local environment	
Headstone upright	Grey Granite	192 x 76 x 15cm	Rectangular with pointed curved top	Grass to base  Steep slope down at rear	
Facing East					
Engraving?					
Damage			Lichen: some white foliose lichen on inscription surface edges, possibly <i>Pseudevernia furfuracea</i>		
Remarks	William contains what looks like a metallic inlay, possibly lead which may have fallen out of other letters nearby. From "Also their daughter..." downwards the letters are enhanced with gold. Some black fungus on face.				

## Inscription/engraving:

In  
Loving memory  
of  
WILLIAM BURTON, F.E.I.S.  
WHO DIED 19<sup>TH</sup> OCTOBER 1900  
AGED 66 YEARS  
*AND HIS WIFE*  
ISABELLA FINLAYSON  
WHO DIED 12<sup>TH</sup> APRIL 1921  
*ALSO THEIR SON*  
WALTER CAMERON  
WHO DIED 21<sup>ST</sup> FEBRUARY 1936  
*ALSO THEIR DAUGHTER*

ANNIE PIRIE  
WHO DIED 5<sup>TH</sup> FEBRUARY 1966  
*AND THEIR SON*  
WILLIAM FINLAYSON  
WHO DIED 10<sup>TH</sup> FEBRUARY 1968.

#317



Condition report

#318

Orientation	Material	Size	Shape	Local environment
Obelisk	Granite	Plinth 85x100x89  Main 105x60x60  Obelisk 225x50x50	Needle-Obelisk	Grass to base in railed enclosure at top of slope  At NE corner of kirkyard
Facing west				PHOTO ID P1040061
Engraving?				
Damage			Lichen: Crustose and foliose lichen common on inscription face and obelisk.	
Remarks				

Inscription/engraving:

SACRED  
  
TO  
  
THE MEMORY  
  
OF THE REV<sup>D</sup> D N CAMPBELL  
  
FOR 34 YEARS MINISTER  
  
OF KILMORE AND KILBRIDE  
  
DIED 2<sup>ND</sup> APRIL 1869  
  
AGED 60  
  
ERECTED  
  
IN AFFECTIONATE REMEMBRANCE  
  
BY HIS PARISHIONERS  
  
AND OF HIS WIFE

MARGARET CAMPBELL

#318



# Condition report

#319

Orientation	Material	Size	Shape	Local environment
Headstone upright	Sandstone	165x75x20 cms	Rounded-semicircular top	Grass to base  Session house east wall to rear
Facing East				PHOTO ID P1040062
Engraving?				
Damage			Lichen: Few large white crustose colonies on main stone facing E and orange lichen on base. Foliose on edges of semicircular top.	
Remarks				

## Inscription/engraving:

ERECTED  
BY  
JOHN AND ANN SINCLAIR  
IN MEMORY OF  
THEIR BELOVED CHILDREN  
DUNCAN M<sup>C</sup>NAB  
DIED IN INFANCY AT GEORGE ST OBAN  
CATHERINE  
DIED AT CARNTYRE ROAD GLASGOW  
1<sup>ST</sup> OCTOBER 1883 AGED 2 YEARS  
JOAN DIED AT CARNTYRE ROAD  
10<sup>TH</sup> OCTOBER 1883 AGED 5 ½ YEARS  
JOAN DIED AT DUNCAN ST  
BRIDGETON GLASGOW

9<sup>TH</sup> APRIL 1893 AGED 3 YEARS

THE ABOVE JOHN SINCLAIR

DIED AT GLASGOW

18<sup>TH</sup> SEPT<sup>R</sup> 1922 AGED 78 YEARS

HIS WIFE ANN M<sup>C</sup>NAB

DIED AT GLASGOW

13<sup>TH</sup> NOV<sup>R</sup> 1933 AGED 83 YEARS

“THEY SHALL BE MINE SAITH THE LORD OF HOSTS

IN THAT DAY WHEN I MAKE UP MY JEWELS”

#319



### **Annexe III, Lichens of the Kilbride Churchyard**

---

This preliminary survey of the lichens of the Kibride graveyard was undertaken in conjunction with the Gravestone Recording and Condition Report Survey (Annexe1) is not meant to be exhaustive and is focused on the lichen found on the gravestones rather than those on trees and plants or those found on the kirk ruins. All photos here, are of a selection of lichen on selected gravestones, taken with a super macro setting



## Lichens of the Kilbride Graveyard

### Background

Of the approximately 1,600 species of lichen (associations of a fungus and an alga) recorded in Scotland, 500 species are found in the Atlantic woodlands. Lichens exhibit many shapes, variable sizes, and a comprehensive spectrum of colours; however, the popular view is that they are overwhelmingly white-ish. They are early colonisers into pristine and sterile environments completely lacking in humus and nitrogen; for example at the base of glaciers as they retreat, on new volcanic islands, and of course of particular interest here headstones and graveslabs.

The size and shape of a lichen plant can give an indication of the length of period that the growing surface has been exposed, provided there has been no human intervention (cleaning of the gravestones etc.) and hence an approximate relative age of the gravestones, particularly important for the West Highland Monuments and earlier which bear no inscription or date. However, this is beyond the scope of this study.

### The Kilbride Lichen.

In this study we shall confine ourselves to recording the frequently represented types of lichen seen at Kilbride, which may show the effect of aspect and substrate on species and growth, and any role of the location in the graveyard, for example higher versus lower. Of particular note at Kilbride is the strong and cooling sea loch wind which comes from the SSW, Loch Feochan Ardentallen Bay, which may differentially affect the upper (exposed) and lower (sheltered) part of the graveyard.

The lichens found have been categorised into 'type' and where possible species have been identified by observation; however no chemical testing has been undertaken as this would have of necessity damaged the lichen, and consequently quite possibly the underlying stone. The lichen on the trees and shrubs have not been recorded.

The predominant types of lichen found on the gravestones, locally known as 'grim', are as expected, Leprose, Crustose and Foliose, as yet no Fruticose has been identified although the search and identification has not been exhaustive.

Shown below is a selection of photos of the more distinctive of the lichen observed at the graveyard, and where possible putative species identifications made, if not genera or simple differentiation between leprose, crustose, foliose and fruticose made. Significant further time would need to be spent on site to make a comprehensive study and identify species, as well as lichen on the other structures and on trees.

# SELECTED EXAMPLES OF LICHENS ON THE GRAVESTONES AT THE KILBRIDE KIRKYARD



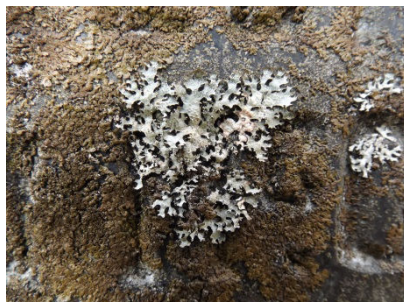
Possibly *Parmelina pastillifera*



White/grey crustose



*Opegrapha gyrocarpa*  
*Porpidia platycarpoides*



*Parmelia saxatilis* Crottle or Crotal  
with *Parmelia glabratula* zoom on right



*Physcia leptalea* or *aipolea* similar to *caisea ascendens*  
showing (on right) Jam Tart fruiting bodies





*Opegrapha gyrocarpa*  
*Porpidia platycarpoides*



Crustose



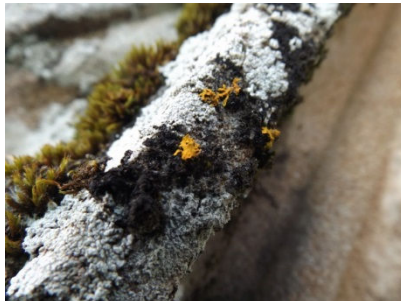
Crustose brown  
Not identified



Top left:  
*Anaphychia runcinata* or  
*Melanelixia fuliginosa*  
Centre  
Leprose green powdery granules  
Not identified



White crustose



Orange: *Xanthoparva aureola* zoom on right



Top right:  
*Ochrochelia* spp.  
Middle:  
*Pertusonia* spp.  
or  
*Phlyctis* spp.



Foliose-possibly  
*Parmilia* spp. (*pastillifera*)  
or  
*Phaeophyscia* spp. (*orbicularis*) zoom on right





Crustose-not yet identified



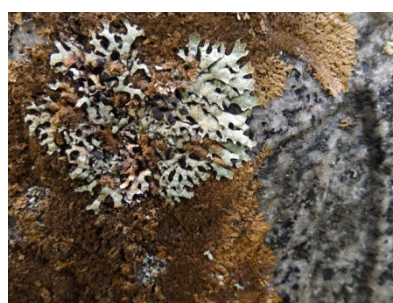
*Acospora* spp. (*cervina*)????  
*Lecanora* spp. (*rupicola*) ????



*Xanthoria parietina*, (although possibly *Polycarpa*) Orange to yellow Jam Tart Fruits; zoom on right



*Hypotrachnea revoluta*  
*Parmelia sulcata*



*Melanelixia fuliginosa*, *Parmelia sulcata*





Unidentified foliose and leprose



Leprose white/grey and green



*Lecanora rupicola*



*Hypotrachnea revoluta*



*Parmotrema* spp possibly *trematum*



*Candelarienella vitellina* zoom on right



*Candelariella vitellina* or *reflexa*



*Melanelixia fuliginosa*



*Caloplacia* spp. Or *Physcia* spp  
possibly *caseii*



Possibly white crustose



Possibly white crustose



*Calicium corynellum*

Table of species on selected gravestones at Kilbride Churchyard

Species	e.g. Gravestone Numbers	Common (local) names
<i>Acospora</i> spp. ( <i>cervina</i> )	14, 311	
<i>Anaptychia runcinata</i>	4, 12, 21	
<i>Calicium corynellum</i>	27,	
<i>Caloplacia</i> spp	227	
<i>Candelariella vitellina</i>	237, 308,	
<i>Cladonia rangiformis</i>	47	Reindeer lichen
<i>Hypotrachnea revoluta</i>	21, 25, 207	
<i>Lecanora</i> spp. ( <i>rupicola</i> )	8, 14, 15, 18, 25, 207, 266, 311	
<i>Melanelixia fuliginosa</i>	4, 11,12, 25, 225, 226, 311	Camouflage lichen
<i>Ochrochelia</i> spp.	2,	
<i>Opegrapha gyrocarpa</i>	12, 16, 27, 275, 237, 311	
<i>Parmelia glabratula</i>	21,27, 226	
<i>Parmelia saxatilis</i>	11, 16, 19, 21,27, 226	Crottle, crotal
<i>Parmelia sulcata</i>	11, 13, 19, 20, 21, 22, 27,40, 41, 207, 226, 302,	
<i>Parmotrema</i> spp	25,	
<i>Phaeophyscia</i> spp.	2, 27	
<i>Parmelina pastillifera</i>	2, 19, 27, 226, 311	
<i>Phlyctis</i> spp.	2,	
<i>Physcia leptalea/ aipolea</i> similar to <i>caisea</i> showing Jam Tart fruiting bodies	1, 38, 227, 266, 312,	
<i>Physconia grisea</i>	264	
<i>Porpidia platycarpoides</i>	15, 27, 237, 311	
<i>Pseudevernia furfuracea</i>	12, 13, 16, 25, 47, 317,	Antler lichen

<i>Pseudocyphellaria lacerata</i>	312	
<i>Usnea hirta</i>	25	
<i>Xanthoparva aureola</i>	2,	
<i>Xanthoria parietina</i> , (although possibly <i>Polycarpa</i> )	19, 42, 237	

Resources:

Key to Nature, Natural History museum, A key to common lichens on trees in England

Pier Luigi Nimis, Pat Wolseley & Stefano Martellos (2009)

The National Biodiversity Network (<http://data.nbn.org.uk/>)

A Survey of the Flora and Environment of Mull Edited by Jermy A.C. and Crabbe J.A., British Natural History Museum (1978)



## **ANNEXE IV**

---

**Transcript of the document in the Argyll and Bute Archive, Lochgilphead recording names and dates on the pre 1855 gravestones for comparison to current inscriptions. May give some insight into deterioration of the inscriptions on the gravestones between 1972 and 2013/4**

Argyll and Bute Archives Lochgilphead

MIS 24-29

Kilmore and Kilbride 26

Kilbride Old Parish Church Kilbride Churchyard Nr Oban

Recorded and lodged by Miss Rosemary Mitchell 1972

*Transcribed from the above record on 18<sup>th</sup> February 2013 by Faith and Bob Irving  
No accompanying plan or diagram that relates to these inscriptions located in the Archive.*  
Page 1.

1. Jane Carter died at Dunach 8/5/1838 aged 26 years
2. Allan McDougall died in Glenetive 30/8/1831 aged 43 years. His wife Mary McDougall died 23/12/1879 aged 85 years their son Duncan died September 1825 aged 3 years, son Dougall died at Oban 30/10/1851 aged 24 years daughter Sarah died at Oban 25/10/18 aged 60 years
3. By Mary McCallum-her father John McCallum died 10/8/1833 her mother Christina Mc Caig died 21/5/1848 her sister Jessie died 9/6/1836 her brother Donald 28/5/1843 the above Mary McCallum 7/1/1866 aged 87 years
4. By Ann McConachie-her parents Donald McConachie died 22 at Largs, Ayrshire 7/5/1867 aged 80 years. Stone placed by their daughter Catherine, wife of J. McIntyre
5. Sarah Livingstone died November 1835 aged 69 years and her husband Dugald Mc Dougall, Molie died in May 1845 aged 80 years. Stone placed by their daughter Catherine, wife of J McIntyre
6. Christina MacDougall died at Largs 30/3/1830 aged 63 years by John MacConachie
7. John McDougall son of Donald McDougall, tenant. Molie died 12/4/1844 aged 16 years and his brother and 2 sisters who died young and also his son Archibald who died at Glencrutten 23/9/1853 aged 23 years and of their father died at Glencrutten 12/3/63 aged 72 years, also Donald, inspector of Poor, son of the above named Donald McDougall died Oban 21/1/1884 aged 47 years
8. Ann McDougall Daughter of Donald McDougall, tenant Molie died 2/5/1844 aged 18 year, his son Dugald died at Glencrutten 27/10/1853 aged 29 years, his wife Mary Campbell died at Oban 22/7/1883 aged 84 years.
- 9 Inscription partly worn away. Allan McDougall died aged 22 years, his brother Neil died 2/3.18(4 or 1) aged 32 years. Stone placed by their brother Duncan, tenant, Gallanach.
10. Primitive and worn inscription. Donald MacPhail died 2 June 1816 or 3 years. By Archibald MacPhail..
11. Sarah McDougall spouse to Hugh McLugash (Letileraf) Oban died January 1790 aged 3? Years

**Kilbride Churchyard near Oban pre-1855 Tombstone inscriptions recorded by Miss Rosemary M Mitchell 1972**

12. 1870. By Alexander Peter McArthur-his father Neil McArthur died at Dunach 20/3/1823 aged 34 years, his mother Mary McGregor died at Glencrutten 28/12/1846 aged 53 years.

13. Archibald McArthur farmer Achalic and Lagnakeil died 17/6/1869 aged 80 years and his wife Sarah McArthur died 15/5/1869 aged 60 years their daughter Catherine died 10/4/1856 aged 1 year and son Dugald died 19/9/1870 aged 33 years

14. By Dugald MacGrigor 20 March 1802 (stone sunken)

15. (very sunken and worn)Here lyes the corpse of John McInnes who died on ?

16. By Helen Bayne-her husband John MacEachnie late merchant in Oban died 29/12/1829 aged 50 years

16a Elizabeth eldest daughter of John MacEachnie merchant , Oban died 20/8/1813 aged 6 years and Helen died 7/8/1816 aged 1<sup>1</sup>/<sub>2</sub> years.

17 Helen and Elizabeth McLachlan died in infancy. Stone placed by their brother Donald McLachlan, mason, Oban 1821

18. 1875 By John McCulloch – his sister Mary died 21/4/1831 Sarah Cowan his mother died 1/10/1844 Duncan his father died March 1845 aged 84 years. Archibald his brother died 27/2/1856 also Duncan died in Australia 16/3/74 and Duncan his son died Gaoylin, Kerrera 15/4/1856 aged 19 years. John died Benderloch 30/4/1875 aged 36 years also a boy in infancy Sarah his daughter died Glasgow 7/1/1872 aged 29 years. The above John McCulloch died Oban 30/7/1884 aged 81 years. His wife Catherine Campbell died Oban 28/3/1897 aged 83 years and their youngest son Archibald died Oban 10/8/1918 aged 67 years

19 Elizabeth McNeil spouse to Alexander (May) Oban died 11/9/1828 aged 60 years. By her sons Archibald Neil, Hector and John May

20 head stone - against church wall against church wall, sunken and broken. Of John Cameron late innkeeper, Oban

21 Farquar McCowan 1803

22 James Anderson, Supervisor of Excise at Oban died 25/7/1812 in 9<sup>th</sup> year.

23. By Angus McKinnon, Kerra his father Lachlin McKinnon died 20/3/1816 aged 65 years

23a. By Angus McKinnon, Barnabuck his sons Lachlan McKinnon aged 39 years and Allan McKinnon aged 28 years died 7/9/1865

23b. 1893 By Sophia McMillan her father Angus McKinnon late farmer Barnabuck, Kerrera died Oban 5/3/1889 aged 94 years. Her mother Lucy McDougall died Barnabuck 9/11/1871 aged 72 years. Also her daughter Martha McMillan died Ulva Villa, Oban 26/5/1888 aged 27 years. The above Sophia died Ulva, Oban 10/3/1908 aged 81 years

24. Archibald Keith died 16/2/1812 aged 28 years. Stone by spouse Jean Cowan, Oban

25. By Sarah Livingstone, her father Neil died Soroba 1/12/1819 aged 69 years

25a. By Isabella Livingstone or Smith-her mother Catherine Livingstone McIntyre died Soroba cottage near Oban 25/3/1883 aged 101 years, and her father Archibald Livingston of Port Kerrera died at Soroban Cottage 27/1/1884 aged 98 years

26 William White, mason, Oban died 17/3/1819 aged 57 years and Andrew and David his sons who died young. Stone placed by his children.

26a Dugald White died Kilmore 20/11/1866 aged 66 years and his wife Ann McDougall died 20/2/1879 aged 68 years. By his daughter Lily, wife of Robert Walls

27 Here lyes the body of Robert Golld, mason from M(uthi)e died at Oban 20/8/1787 aged 52 years

28 By Dugald McGrigor, ship-master, his father Alexander McGrigor died 1757 aged 62 years

29 1840 Archibald McPhail died Kilmore 20/3/1833 aged 59 years

30 John McIntyre died 7 March 1819 aged 17 years

30b Duncan McIntyre, farmer, Torinturk died 12/8/1838 aged 93 years Mary McColl, his wife died Torinturk and their family, John Glasgow, Archibald died at Torinturk, Duncan died Jamaica, Alexander died Oban, January 1861 aged 53 years. Malcolm died Torinturk, Sarah died Torinturk. By their grandson, Archibald McIntyre

30c Duncan McIntyre farmer born Torinturk 29/3/1791 died there 6/8/1885 and of his wife Janet McCalman born at Achagthalan died at Barrachan 25/7/1883 their sons Peter died Torinturk 1850 aged 2 years. Duncan died Oban 3/12/1913 aged 72 years

31 By John Archibald McIntyre – their father Archibald McIntyre, Joiner, died Toberonochy, Luing 28/9/1872 aged 70 years. Their brother Duncan, died at Kilchattan 26 April, 1850 aged 11 months, their mother Mary McCalman died 13/4/1888

31(a) John McDougall late tenant Balimore, Kerrera died August 1848 aged 74 years and his wife Mary Campbell died January 1867 aged 77 years

#### **Page 4**

32 Not Legible

33 By Agnes Douglas-John Douglas her father died 4/5/1840 aged 60 years. Sarah Douglas her mother died 28/12/47 aged 84 years. John Douglas, their grandson died 18/6/1855 aged 17 years. Jane Douglas her sister died at Drunamore Lodge, Perthshire 6/7/1861 aged 54 years

34 Here lyes the family of John Livingston, mariner from Oban 1807

35 Nichol McDougall, son of Alexander McDougall and Mary McMillan of Dunach born 29/11/1818 died 27/4/1834

36 John Swan, smith, Kilmore died 12/5/1820 aged 49 years

37 Here lies remains of Archibald Sinclair died the 25/4/1803, age unreadable

37a John Sinclair, tenant Strontoller aged 69 years, and his wife Mary McLachlan aged 58

38 Mary Sinclair, daughter of John Sinclair, Tacksman of Dunmore died 1/2/1813 aged 6 months. Mary Sinclair her sister died 2/3/1841 aged 23 years. Jane Sinclair her sister died 13/3/1851 aged 32 years and their mother Mary, daughter of Colin McIlreach Parish Schoolmaster Muckairn, wife of John Sinclair, Dunmore died at Oban 26/10/1858 aged 80 years

38a Archibald Sinclair son to John Sinclair, tacksman of Dunmore died 29/12/1812 aged 7 years. John Sinclair tenant of Dunmore died 5/1/1840 aged 70 years. John Sinclair son of John Sinclair tenant of Dunmore died at Tighnabruaich 18/7/1902 aged 80 years, his sister Catherine Sinclair, wife of Robert McLean died at Oban 7/12/1886 aged 80 years

## Page 5

39 Within railings, 3 flat slabs, well made, with coat of arms, no writing. Clean and undamaged

40 John MacDougall, Kilniver died 6/6/18?1 aged? His spouse Christine MacColl died 11/12/18(5)3 aged 76 years. By their son Alexander

40a Alexander MacDougall, builder, Oban, died 1/3/1861 aged 57 years, his spouse Catherine Campbell 9/8/1871 aged 66 years

40b 1839 Margaret Livingston died at Oban, 8/4/1837 aged 49 years. Her son Duncan MacDougall died Oban 9/2/1831 aged 18 years. By her sons Donald and John MacDougall

40c By Alexander McDougall, his father Archibald McDougall died Glasgow 10/5/1872 aged 36 years

41 By A&M Munn-their father died 7/1/1838 aged 53 years. And his spouse Ann McLucas died 25/1/1845 aged 60 years

41a Archibald Munn Longiston, Oban, died 16/2/1887 aged 78 years. His wife Christine Paterson died Longiston 8/5/1898 aged 87 years, their son John, died Oban 2/8/1880 aged 34 years, his sons Archibald died in infancy. John died at Crieff 28/5/1907 aged 23 years

42 31/4/1820 died McDougall

43 Heir lyes Angus McDougal of Corrilorne died this November the (blank) Heir lyes Margaret Campbell, spouse to ? McDougal, died this December the 30<sup>th</sup>

43 b Alexander McDougal of Corrilorne died 19 January 1693

44 Sarah and Mary Campbell daughter to Alexander Campbell, Oban. Sarah born 2/4/1809 died 26/3/1815. Mary died 6/12/1812

44a By D Campbell, Blacksmith, his father Angus Campbell, contractor died 2/4/1884 aged 59 years, his mother Catherine McIntyre died 22/10/1903 aged 72 years (rest of stone broken off)

44b 1871 By Angus Campbell, contractor, Oban – his father Donald Campbell, flesher, Oban, his mother Mary Campbell also of his children, Neil and Mary

## Page 6

45 Malcolm Sinclair died Balgowan 29/1/1849 aged 27 years. By his wife Lucy L Sinclair, November 1849. She died 1/6/1900 , aged 80 years

46 Dugald McCulloch died 1849, his wife Mary McIntyre du(i)ed 1857, their children Matilda died 1835 aged 2 years. Duncan 1838 aged 2 years Catherine 1851 aged 15 years. John 1872 aged 13 years.

47 By Malcolm swan-his father John Swan, elder died, Ardintallon 27/4/1844 aged 83 years.

48 P.M.C(orG) 1793, weaver

49 Alexander McCulloch died 4/8/1833. Stone laid by his parents John McCulloch and Mary McDougall, tenant Colgin

50 By John Livingstone, Ballimore, Loch Awe, his wife Euphemia Cowan died 12/9/1875 aged 59 years. His children Dugald, died February 1838 aged 5 months, Allan, September 1851 aged 1 year, Isabella, Isabella, October 1852 aged 5 years.

51 By Hugh McCulloch and Mary Campbell, his spouse, their children, 1831

51a Duncan McCulloch died 1817 aged 10 years, Ann died 1819, Hugh 18?1, Margaret 18?3 aged 19 years, Susan died October 1836 aged 17 years

52 1871. By Archibald McIntyre, mason, Oban – his brethren Neil McIntyre, died March 1847 age 5 years. Dugald died October 1853 aged 15 years. Donald died October 1856 aged 19 years. Hugh died 20/6/188? Aged 76 years. Barbara Livingston wife of Hugh died 16/11/1892 aged 81 years. John 16/12/1913 aged 65 years. Pte Hugh McIntyre 48<sup>th</sup> Highlanders of Canada killed at St Julian 22/4/1915 aged 31 years. Elizabeth Stewart, wife of John McIntyre died 7/8/1932 aged 76 years

53 By Alexander Livingston, his mother Mary MacDougall died November 182(2 or 3)

54 John McCulloch late of H M Customs, London died at Oban 7/3/1874 aged 59 years and his sister Mary Lamont died Tobermory 1/8/1874 aged 54 years.

54a Our father Allan McCulloch died at Oban 1/4/1904 aged 76 years and our mother Elisabeth McCallum died at Oban 23/2/1886 aged 57 years. Our brothers Donald and John died at Easdale interred at Kilbrandon and sister Jessie died Oban 24/3/1880 aged 13 years.

**Page 7**

**54 b** Donald McCulloch, baker, Oban died 4/2/1867 aged 49 years, his sons Donald died 8 December 1863 aged 3 years. Angus died 16/7/1864 aged 16 months, his wife Barbara Sutherland died 8/1/1874 aged 47 years. John died in Edinburgh 10/2/1933 aged 74 years. Susan Cameron, wife of the above died Edinburgh 10/1/1933, aged 74 years, sons of the said John McCulloch, Iain Hugh killed in action in France 25/9/1915, Donald killed in action in France 2/8/1917

54c John McCulloch died 10/6/1819 aged 69 years, also Mary McCulloch wife of the (rest unreadable)

55 1837 Alexander McCulloch tenant, Kilbride

## **Annexe VI; West Highland and Medieval Funerary Monuments Kilbride Churchyard**

---

Medieval West Highland Grave Monuments identified in this survey matched with previously published or recorded surveys.



## West Highland and Medieval Funerary Monuments at Kilbride Churchyard

Table of comparison with previously identified monuments at this site

Adopt A Monument Survey2013  Ref#	Lorn Vol 2  1974	Campbell Rubbings 1908-1925	Steer and Dixon Notebooks 1961	Steer and Dixon Notes 1961/64	Geneological Society recording (Rosemary Mitchell)
<p style="text-align: center;"><b>29,</b></p> <p>Memorial slab 1693 to the memory of Alexander MacDougall of Corrilorne 1623</p> <p>Blazon in top panel obliterated, surrounded by floriated design. To right, a female figure, to left a kilted warrior, spear in right hand, left hand on sword. At the bottom of the panel are the remains of a galley, the hull is just discernible.</p>		<p>x, 1</p> <p>in the rubbings archive, Inverary castle 1." 1908 labelled as Top section (of three fallen and trampled) of 1693 cross to the memory of Alexander MacDougall of Corrilorne 1623. This is now thought to be incorrect and a memorial slab</p>	DG11-not found at that time		43b noted Alexander McDougal of Corrilorne died 19 January 1693
<p style="text-align: center;"><b>45</b></p> <p>Slab tapered to the bottom, double roll moulding and nail-head ornament round the edges, on viewers right sword with reverse guard, worn pommel. Top left three creatures entwined in a triangle. Down left side foliagenous scrolls with triquetra filling between the scrolls and the sword</p>					
<p style="text-align: center;"><b>64</b></p> <p>Remains of shield all carving emblazons inscription erased</p>					
<p style="text-align: center;"><b>65</b></p> <p>Fine example of Loch Awe School carving, bottom section</p>					39 Within railings, 3 flat slabs, well made, with

includes female figure with mirror, sun within oval, emblazon at top worn or removed  Central section Angel with trumpet connecting to circle in bottom panel					coat of arm+s, no writing. Clean and undamaged
<b>66</b>  Broken slab with Armorial shield with banner all else worn/erased					39 Within railings
<b>67</b>  Fine example of Loch Awe sandstone carving. Immortality symbol at top, to viewers left knotwork in 3 circles down one side with possible armorial and banner in centre			<b>Possibly DG7</b>  Part of tapered slab bevelled edge 1.4mFrag at SW corner of railed enclosure highest point	Similar to L.Awe type. close to table tomb of Ian Duchallaigh Heavy cable-small scroll partly under table tomb Ian Duchallaigh. Traces of small scroll enclosing 5 lobed leaf. Edge plain moulding with heavy cable inside.	39 Within railings
<b>68</b>  Small slab with simple angel (winged soul) in simple border					
<b>73</b>  Probably Loch Awe School slate slab, Sword with cantered quillons/reverse guard flanked on either side by rough vines	Medieval (3) p142. Top, pair headless animals, sword flanked by double plant scrolls	x, 3	<b>DG13</b>  1.84x0.55m Surface badly flaked –local slate	14 <sup>th</sup> -15 <sup>th</sup> century  Loch Awe Class II, sword central, quillons short and inclined, 2 opposed cats at top heads eroded	
<b>74</b>  Slate slab engraving at top worn away middle to lower section has central ovals with vine pattern changing to 5 lobed leaf in each of 3 circles at bottom. To viewers left side is a heavy cabling running to the left of the circles and a heavy plain moulding or spear					
<b>76</b>  Sandstone slab laying flat					

arguably with rune markings. Raising this would show if it is an ogham stone					
<b>83</b>  Slab bearing an unsheathed single-handed sword with short quillons on the right, on one side of the sword is a single plant scroll surmounted by a single rose. Inscriptions above that are difficult to decipher.	Medieval (8) Bevelled edges with one row of elongated nail head ornament	x, 2	<b>DG12</b>  Part of tapered slab with bevelled edges bottom broken off. Nail head on bevel and margin of upper surface Now 1.45x0.48 Panel type decoration	Assumed Iona Class II single scroll forming circles ctg. Leaf sprays in centre narrow panel, circular volutes filled with clusters trefoils	
<b>84</b>  Small Fragment containing foliated 7 lobed leaves in vine network					
<b>299</b>  Slate slab, nail head moulding. Staff with round pommel and button on viewers right. Same length as sword blade . Plant scroll to left	Medieval (9) p142  Nail head ornament, cable moulding double plant scroll to left, sword to right	X,9	<b>DG4</b>  Outside MacDougall burial lair on viewers left of entrance Tapered slab bevelled edges very worn 6'1"x1'7"x1'5" 1"chamfer (1.91x 0.54)	Prob. Iona Type 2 sword. Staff similar to slab on floor of St. Orans, Iona	
<b>303</b>  Grip and oval pommel of a Claymore centrally located. Remainder worn	Medieval (12) p142		<b>DG 16-</b>  16 <sup>th</sup> Century (not found) parallel sided 1.78x0.52 entrance to MacDougall burial enclosure	1500-1560  Only the grip and oval pommel of a Claymore of a centrally located sword is visible in this slab the rest is badly worn/eroded	
Missing (removed?) possibly to an archive/museum	Medieval (1) p142	x, 9	<b>DG2</b> SW corner of chchyd 1 yd N of upright tombstone of John Livingstone 5'9"x1'6"x1'1" Tapered slab 1.79x0.46m at head	Pre 1500. Loch Awe Class II Type I sword in scabbard. Plain border chevron at top. Circle of 4 concentric rings ctg. Rosette flanked by a rosette triquetra. Below 2 opposed wolves double twisted stems on either side. Leaf spray at foot.	

Not found	Medieval (6) p142	x, 4 (uncertain)	<b>DG3</b> Lower part of tapered slab. 5 yds N of DG2 in next row of stones to W	Loch Awe Class III shears and casket at foot. Triple plain moulding. Stone at head of slab not related	
Not found, but several slate slabs with no or worn carving in this region	Medieval (2)p142  Clumsy double scroll edge, two plain mouldings		<b>DG5</b> 5 yds S of SW end of church- Tapered-1.63x0.43 – (0.36)m	Loch Awe Class III 15 <sup>th</sup> century. Double plain moulding. Stems with short branches ends with leaves or buds-terminates at top in open circle crowned by opposed dragon heads. Casket at foot	
Three possible slabs in this area, but no carving or worn	Medieval (5)p142  Triple plain moulding, foliated cross, sword and belt	x. 7	<b>DG6</b>  6 ft S and 6ft E of SW corner of church.Complete tapered slab but worn & flaked  5'8"x1'11"x1'7" (1.73x0.6m)	Loch Awe Hybrid-Fol. Cross at top. pre 1500 Type1 sword down viewers rt side. Left plant scroll surmounted by animal	
Not Found, possibly 304, although worn to no visible carving	Medieval (13) p143		<b>DG8</b> At NW cornerof MacDougall burial enclosure between it and church straight sided top broken off  0.59x1.5m (1.76	16 <sup>th</sup> Century only hilt and pommel left 2-handed type 2 sword single plain moulding 1500-1560	

## **ANNEXE VII: Index of Surnames with Gravestone Reference Numbers**

Kilbride Old Churchyard

Index of Surname with Gravestone Reference Number

NW Upper level Nos. 1-99

SE Lower (Kirk remains) level 200-299

Surname	Gravestone Reference Numbers <i>(Annexe I)</i>	
AMD	229	
AMK	274	
Anderson	251	
Bayne	268	
Brown	246	
Burton	317	
Buchan	5	
Buchannan	52	
Cameron	266	
Campbell	13,22,23, 27, 47, 237,269, 288,307, 310,313,318	
Carter	311	
Cowan	9, 236, 243	
Downie	225	
Duncan	262	
Finlayson	317	
Gould	220	
IC	305	
Kieth	215	
Lamont	1, 225, 240, 260	

Livingston	3, 6, 7, 24, 37, 202, 203, 205 206, 241, 242,243,269, 301	
MacPhee	10?	
McArthur	252, 276, 277,284, 316	
McC	258	
McCaig	298	
McClure	308	
McColl	214	
McCallum	287, 298	
McConachie	292	
McConochie	37,285,293,	
McCorquodale	207	
McCowan	263	
McCulloch	1, 5, 6, 63,75, 205,237,240,255,256	
McD	208,209,210	
McDonald	264, 302	
Maceachnie	267, 268	
McEAn	250	
McE	249	
McDougall	4, 24, 29, 31,47,48, 69,79,203,207,216,221,226,227,231, 233, 235, 236,238,279,283, 288, 289, 291, 292,293,297, 301, 302, 309	
McGregor	276	
McGrigor	218, 272	
McInnes	81, 253	
McIntyre	3, 23, 46, 50, 51, 63, 206, 242,290, 301	
McK	230	
McKichen	9	

McKinn on	216, 217, 244	
McLachlan	18, 275	
McLellan	41	
McLucas	34, 40, 41, 43	
McLugash	279	
McMillan	31, 216	
McNab	319	
McNeil	232	
McNiven	51	
McPhail	214, 246, 281, 282	
McPhee	252	
Marshall	269	
Maxton	269	
May	11	
Mitchell	48	
Montgomery	15	
Mossman	285	
Munn	34, 35	
Paterson	5, 35, 285, 315	
P-D	211	
P M 8	219	
Sinclair	18, 19, 20, 30, 36, 70, 71, 319	
Smith	206	
Stewart	3	
Thom...	29	



Walls	221	
White	221, 223	
Wood	292	
No Name	312	
Unreadable	259	

## NOTE

*Separate files are provided for, Annexe II Graveyard Condition Report , Annexe V Original high resolution photographs , Figure 3c Digital representation of survey results and Annexe VII; Table of Primary and Secondary Surnames on Gravestones ordered by Gravestone Reference Number.*

